

Rev03  
 Update: Aug,08,2025

**DATASHEET**

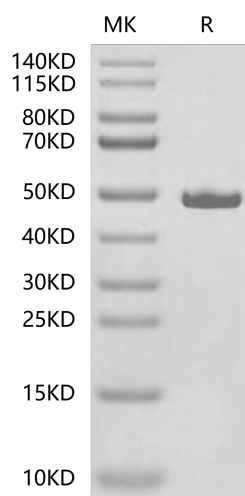
# SETD7, His, Human

Cat. No.: Z05808

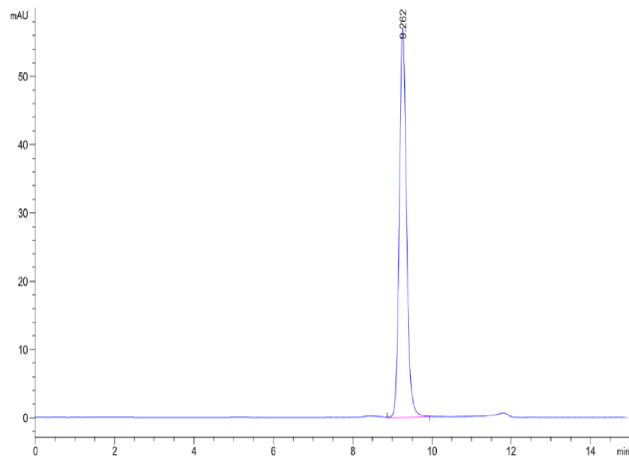
## Product Introduction

<b>Species</b>	Human
<b>Protein Construction</b>	<div style="display: flex; align-items: center; justify-content: center;"> <div style="background-color: #4a7c9c; color: white; padding: 2px 5px; margin-right: 5px;">His</div> <div style="background-color: #0056b3; color: white; padding: 2px 5px; margin-right: 5px;">SETD7 (Met1-Lys366)_x000D_</div> <div style="background-color: #0056b3; color: white; padding: 2px 5px;">Accession # NP_085151.1</div> </div> <div style="display: flex; justify-content: space-between; margin-top: 5px;"> <span>N-term</span> <span>C-term</span> </div>
<b>Purity</b>	> 95% as determined by BisTris PAGE > 95% as determined by HPLC
<b>Endotoxin Level</b>	Less than 1EU per µg by the LAL method.
<b>Expression System</b>	E.coli
<b>Theoretical Molecular Weight</b>	41.68 kDa
<b>Apparent Molecular Weight</b>	The protein migrates to 47-50 kDa based on Bis-Tris PAGE result.
<b>Formulation</b>	Lyophilized from 0.22µm filtered solution in PBS (pH 7.4).
<b>Reconstitution</b>	Centrifuge the tube before opening. Reconstituting to a concentration more than 100 µg/ml is recommended. Dissolve the lyophilized protein in distilled water.
<b>Storage &amp; Stability</b>	Upon receiving, the product remains stable up to 6 months at -20 °C or below. Upon reconstitution, the product should be stable for 3 months at -80 °C. Avoid repeated freeze-thaw cycles.

## Examples



SETD7, His, Human on Bis-Tris PAGE under reduced condition.  
 The purity is greater than 95%.



The purity of SETD7, His, Human is greater than 95% as determined by SEC-HPLC.

## Background

**Target Background :** SETD7 is a methyltransferase that specifically catalyzes the monomethylation of lysine 4 on histone H3. A variety of studies has revealed the role of SETD7 in posttranslational modifications of non-histone proteins. Aberrant expression of SETD7 has been associated with various diseases, including cancer. As a prognostic marker of breast cancer and a novel antioxidant promoter under oxidative stress in breast cancer, SETD7 is considered a good target for the development of new epigenetic drugs.

**Synonyms :** KIAA1717; KMT7; SET7; SET9; SET7/9

**For research use only. Not intended for human or animal clinical trials, therapeutic or diagnostic use.**

Manufacturer: Nanjing GenScript Biotech Co., Ltd. No. 28Yongxi Road, Jiangning District, Nanjing, Jiangsu, China