

Rev03
 Update: Aug,08,2025

DATASHEET

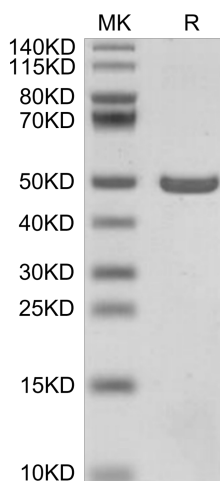
ASPH, His, Mouse

Cat. No.: Z06017

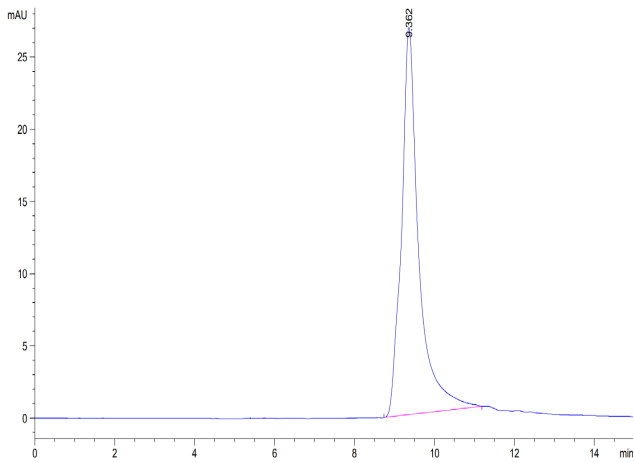
Product Introduction

Species	Mouse
Protein Construction	<div style="display: flex; align-items: center; justify-content: center;"> <div style="background-color: #4a7c9c; color: white; padding: 5px; margin-right: 5px;">His</div> <div style="background-color: #0056b3; color: white; padding: 5px; margin-right: 5px;">ASPH (Ile324-Ile741)_x000D_</div> <div style="background-color: #0056b3; color: white; padding: 5px;">Accession # Q8BSY0-1</div> </div> <div style="display: flex; justify-content: space-between; margin-top: 5px; font-size: small;"> N-term C-term </div>
Purity	> 95% as determined by BisTris PAGE > 95% as determined by HPLC
Endotoxin Level	Less than 1EU per µg by the LAL method.
Expression System	E.coli
Theoretical Molecular Weight	49.4 kDa
Apparent Molecular Weight	The protein has a predicted MW of 49.4 kDa same as Bis-Tris PAGE result.
Formulation	Lyophilized from 0.22µm filtered solution in PBS (pH 7.4).
Reconstitution	Centrifuge the tube before opening. Reconstituting to a concentration more than 100 µg/ml is recommended. Dissolve the lyophilized protein in distilled water.
Storage & Stability	Upon receiving, the product remains stable up to 6 months at -20 °C or below. Upon reconstitution, the product should be stable for 3 months at -80 °C. Avoid repeated freeze-thaw cycles.

Examples



ASPH, His, Mouse on Bis-Tris PAGE under reduced condition.
 The purity is greater than 95%.



The purity of ASPH, His, Mouse is greater than 95% as determined by SEC-HPLC.

Background

Target Background : Aspartate β -hydroxylase (ASPH) is silent in normal adult tissues only to re-emerge during oncogenesis where its function is required for generation and maintenance of malignant phenotypes. Exosomes enable prooncogenic secretome delivering and trafficking for long-distance cell-to-cell communication. Expression profiling of Notch signaling components positively correlates with ASPH expression in breast cancer patients, confirming that ASPH-Notch axis acts functionally in breast tumorigenesis.

Synonyms : Aspartate beta-hydroxylase; ASP beta-hydroxylase; Asph; Bah; Aspartate β -hydroxylase; ASP β -hydroxylase

For research use only. Not intended for human or animal clinical trials, therapeutic or diagnostic use.

Manufacturer: Nanjing GenScript Biotech Co., Ltd. No. 28Yongxi Road, Jiangning District, Nanjing, Jiangsu, China