

Rev03  
 Update: Aug,08,2025

**DATASHEET**

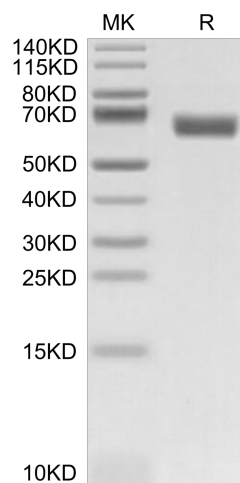
# CLEC-1 hFc Chimera, Mouse

Cat. No.: Z06061

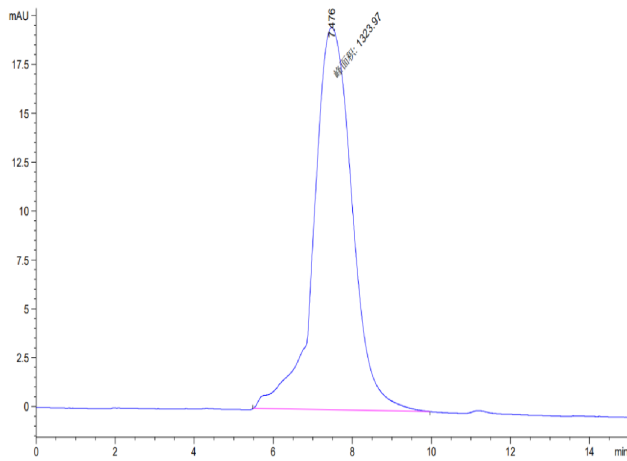
## Product Introduction

<b>Species</b>	Mouse
<b>Protein Construction</b>	<div style="display: flex; align-items: center; justify-content: center;"> <div style="background-color: #4a7ebb; color: white; padding: 5px; margin-right: 10px;">hFc</div> <div style="background-color: #0056b3; color: white; padding: 5px; border: 1px solid white;">           CLEC-1 (Gln73-Gln269)_x000D_            Accession # Q8BWY2         </div> </div> <div style="display: flex; justify-content: space-between; font-size: small; margin-top: 5px;"> <span>N-term</span> <span>C-term</span> </div>
<b>Purity</b>	> 95% as determined by BisTris PAGE > 95% as determined by HPLC
<b>Endotoxin Level</b>	Less than 1EU per µg by the LAL method.
<b>Expression System</b>	HEK293
<b>Theoretical Molecular Weight</b>	50.4 kDa
<b>Apparent Molecular Weight</b>	Due to glycosylation, the protein migrates to 66-68 kDa based on Bis-Tris PAGE result.
<b>Formulation</b>	Lyophilized from 0.22µm filtered solution in PBS (pH 7.4).
<b>Reconstitution</b>	Centrifuge the tube before opening. Reconstituting to a concentration more than 100 µg/ml is recommended. Dissolve the lyophilized protein in distilled water.
<b>Storage &amp; Stability</b>	Upon receiving, the product remains stable up to 6 months at -20 °C or below. Upon reconstitution, the product should be stable for 3 months at -80 °C. Avoid repeated freeze-thaw cycles.

## Examples



CLEC-1 hFc Chimera, Mouse on Bis-Tris PAGE under reduced condition. The purity is greater than 95%.



The purity of CLEC-1 hFc Chimera, Mouse is greater than 95% as determined by SEC-HPLC

## Background

**Target Background :** C-type lectin-like receptor-1 (CLEC-1) is a member of the Dectin-1 cluster of pattern recognition receptors (PRRs). It is involved in host immunity, has immunoregulatory function, and supports allograft tolerance. CLEC-1 may act as a negative regulator of Dectin-1 induced host inflammatory response via suppressing neutrophils recruitment and production of pro-inflammatory cytokine IL-1 $\beta$  production in response to *A. fumigatus* keratitis.

**Synonyms :** CLEC-1; CLEC1; CLEC1A; MGC34328

**For research use only. Not intended for human or animal clinical trials, therapeutic or diagnostic use.**

Manufacturer: Nanjing GenScript Biotech Co., Ltd. No. 28Yongxi Road, Jiangning District, Nanjing, Jiangsu, China