

Rev03
 Update: Aug,08,2025

DATASHEET

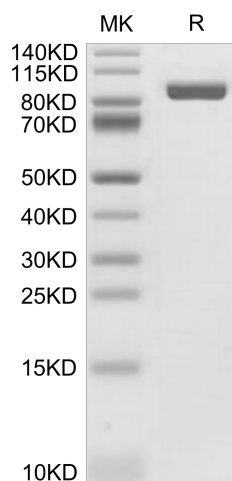
LRIG1, His, Mouse

Cat. No.: Z06248

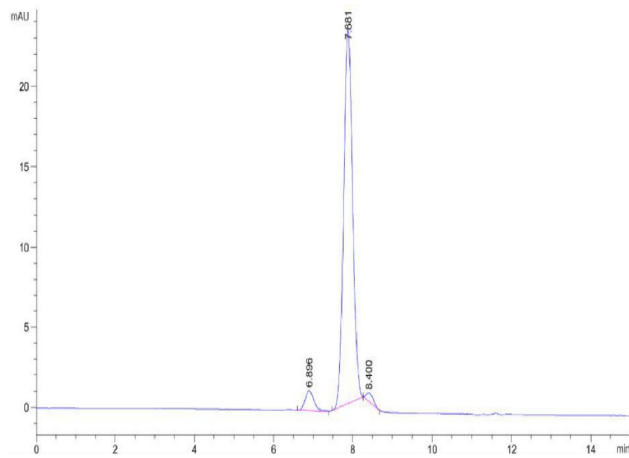
Product Introduction

Species	Mouse
Protein Construction	<div style="display: flex; align-items: center; justify-content: center;"> <div style="background-color: #0056b3; color: white; padding: 5px; text-align: center;"> LRIG1 (Ala35-Thr794)_x000D_ Accession # P70193 </div> <div style="background-color: #8bc34a; color: white; padding: 5px; text-align: center; margin-left: 10px;"> His </div> </div> <div style="display: flex; justify-content: space-around; margin-top: 5px; font-size: small;"> N-term C-term </div>
Purity	> 95% as determined by BisTris PAGE > 90% as determined by HPLC
Endotoxin Level	Less than 1EU per µg by the LAL method.
Expression System	HEK293
Theoretical Molecular Weight	84.7 kDa
Apparent Molecular Weight	Due to glycosylation, the protein migrates to 85-110 kDa based on Bis-Tris PAGE result.
Formulation	Lyophilized from 0.22µm filtered solution in PBS (pH 7.4).
Reconstitution	Centrifuge the tube before opening. Reconstituting to a concentration more than 100 µg/ml is recommended. Dissolve the lyophilized protein in distilled water.
Storage & Stability	Upon receiving, the product remains stable up to 6 months at -20 °C or below. Upon reconstitution, the product should be stable for 3 months at -80 °C. Avoid repeated freeze-thaw cycles.

Examples



LRG1, His, Mouse on Bis-Tris PAGE under reduced condition.
 The purity is greater than 95%.



The purity of LRG1, His, Mouse is greater than 90% as determined by SEC-HPLC.

Background

Target Background : The leucine-rich repeats and immunoglobulin-like domains (LRIG)-1 is a tumor suppressor gene that belongs to the LRIG family. LRIG1 expression has prognostic significance in various human cancers. Somatic mutations, which are associated with a certain rate of response to targeted therapies, are ubiquitously found in human non-small cell lung cancer (NSCLC). LRIG1 was an independent prognostic factor for OS of NSCLC patients. LRIG1 in combination with other clinicopathological risk factors was a stronger prognostic model than clinicopathological risk factors alone.

Synonyms : LIG-1; LIG1; LRIG1; D6Bwg0781e; lmg

For research use only. Not intended for human or animal clinical trials, therapeutic or diagnostic use.

Manufacturer: Nanjing GenScript Biotech Co., Ltd. No. 28Yongxi Road, Jiangning District, Nanjing, Jiangsu, China