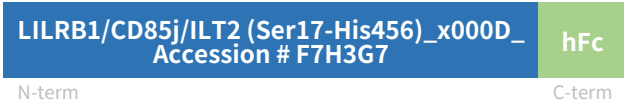


Rev03  
Update: Aug,08,2025**DATASHEET**

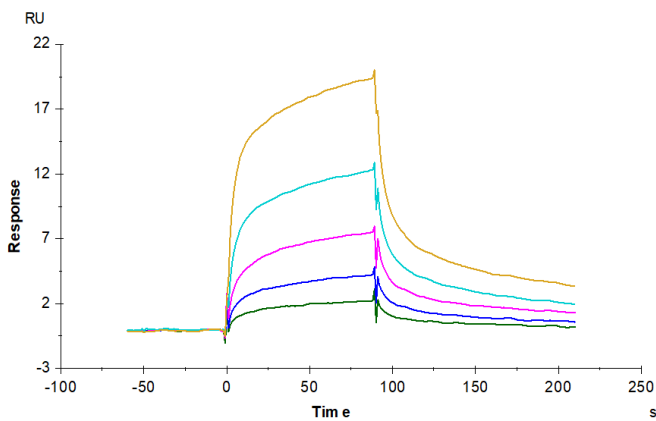
# LILRB1/CD85j/ILT2 hFc Chimera, Rhesus macaque

Cat. No.: Z06448

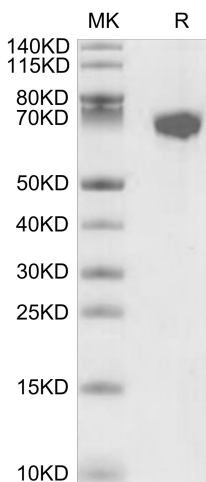
## Product Introduction

<b>Species</b>	Rhesus macaque
<b>Protein Construction</b>	 LILRB1/CD85j/ILT2 (Ser17-His456)_x000D_ hFc Accession # F7H3G7 N-term C-term
<b>Purity</b>	> 95% as determined by BisTris PAGE > 95% as determined by HPLC
<b>Endotoxin Level</b>	Less than 1EU per µg by the LAL method.
<b>Expression System</b>	HEK293
<b>Theoretical Molecular Weight</b>	74.5 kDa
<b>Apparent Molecular Weight</b>	Due to glycosylation, the protein migrates to 80-90 kDa based on Bis-Tris PAGE result.
<b>Formulation</b>	Lyophilized from 0.22µm filtered solution in PBS (pH 7.4).
<b>Reconstitution</b>	Centrifuge the tube before opening. Reconstituting to a concentration more than 100 µg/ml is recommended. Dissolve the lyophilized protein in distilled water.
<b>Storage &amp; Stability</b>	Upon receiving, the product remains stable up to 6 months at -20 °C or below. Upon reconstitution, the product should be stable for 3 months at -80 °C. Avoid repeated freeze-thaw cycles.

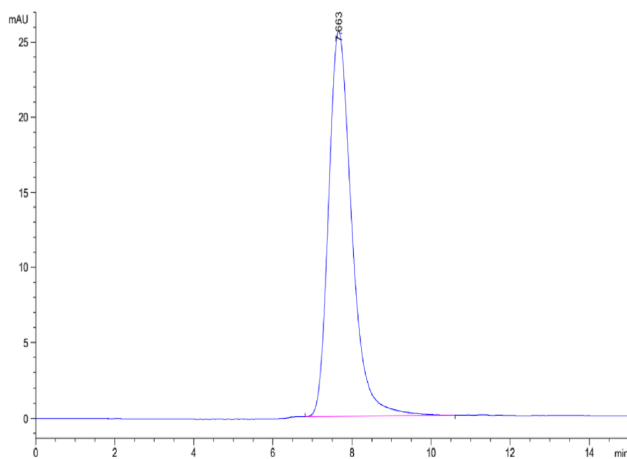
## Examples



Anti-LILRB1 Antibody immobilized on CM5 Chip can bind LILRB1/CD85j/ILT2 hFc Chimera, Rhesus macaque, hFc Tag with an affinity constant of 51.44 nM as determined in SPR assay (Biacore T200).



LILRB1/CD85j/ILT2 hFc Chimera, Rhesus macaque on Bis-Tris PAGE under reduced conditions. The purity is greater than 95%.



The purity of LILRB1/CD85j/ILT2 hFc Chimera, Rhesus macaque is greater than 95% as determined by SEC-HPLC.

## Background

**Target Background :** LILRB1, also known as CD85j and ILT2, is a 110 kDa transmembrane glycoprotein in the LILR immunoregulatory protein family. Mature human LILRB1 consists of a 438 amino acid (aa) extracellular domain (ECD) with 4 tandem Ig-like domains, a 21 aa transmembrane segment, and a 168 aa cytoplasmic domain with 4 inhibitory ITIM motifs. LILRB1 is a receptor for class I MHC antigens. Recognizes a broad spectrum of HLA-A, HLA-B, HLA-C, HLA-G and HLA-F alleles. Receptor for H301/UL18, a human cytomegalovirus class I MHC homolog. Ligand binding results in inhibitory signals and down-regulation of the immune response.

**Synonyms :** ILT2; ILT-2; ILT2FLJ37515; LILRB1; LIR1; MIR7; CD85J; XXbac-BCX85G21.4

**For research use only. Not intended for human or animal clinical trials, therapeutic or diagnostic use.**

Manufacturer: Nanjing GenScript Biotech Co., Ltd. No. 28Yongxi Road, Jiangning District, Nanjing, Jiangsu, China