

Rev03
 Update: Aug,08,2025

DATASHEET

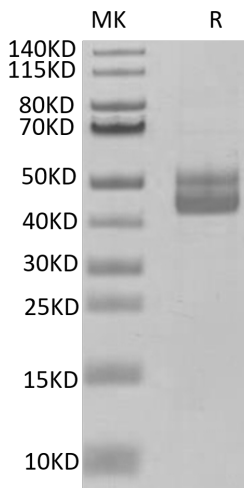
CD3E/CD3 epsilon hFc Chimera, Human

Cat. No.: Z03991

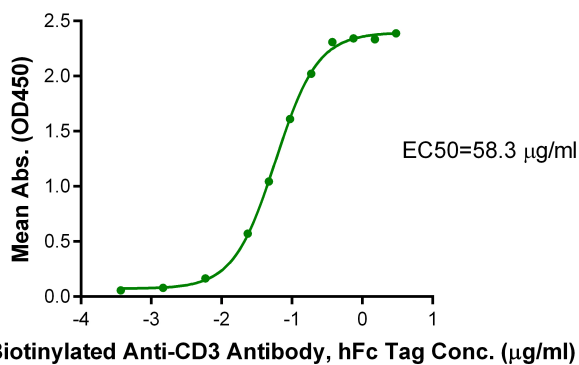
Product Introduction

Species	Human
Protein Construction	<div style="display: flex; align-items: center; justify-content: space-between;"> <div style="background-color: #0056b3; color: white; padding: 5px; text-align: center;"> CD3E/CD3 epsilon [Asp23-Asp126 (C119S, C122S)] Accession # P07766 </div> <div style="background-color: #76923c; color: white; padding: 5px; text-align: center;"> hFc </div> </div> <div style="display: flex; justify-content: space-between; margin-top: 5px;"> N-term C-term </div>
Purity	> 95% as determined by Bis-Tris PAGE
Endotoxin Level	Less than 1EU per µg by the LAL method.
Biological Activity	Measured by its binding ability in a functional ELISA. Immobilized CD3E/CD3 epsilon hFc Chimera, Human at 2µg/ml (100µl/well) on the plate can bind Biotinylated Anti-CD3 Antibody, hFc Tag. Test result was comparable to standard batch.
Expression System	HEK293
Theoretical Molecular Weight	36.1 kDa
Apparent Molecular Weight	Due to glycosylation, the protein migrates to 35-55 kDa based on Bis-Tris PAGE result.
Formulation	Lyophilized from a 0.22 µm filtered solution in PBS, (pH 7.4).
Reconstitution	Centrifuge the tube before opening. Reconstituting to a concentration more than 100 µg/ml is recommended. Dissolve the lyophilized protein in distilled water.
Storage & Stability	Upon receiving, the product remains stable up to 6 months at -20 °C or below. Upon reconstitution, the product should be stable for 3 months at -80 °C. Avoid repeated freeze-thaw cycles.

Examples



CD3E/CD3 epsilon hFc Chimera, Human on Bis-Tris PAGE under reduced condition. The purity is greater than 95%.



Immobilized CD3E/CD3 epsilon hFc Chimera, Human, hFc Tag at 2 µg/ml (100 µl/well) on the plate. Dose response curve for Biotinylated Anti-CD3 Antibody, hFc Tag with the EC50 of 58.3 ng/ml determined by ELISA.

Background

Target Background : T-cell surface glycoprotein CD3 epsilon&CD3 gamma chain, also known as CD3E&CD3G, are single-pass type I membrane proteins. When antigen presenting cells (APCs) activate T-cell receptor (TCR), TCR-mediated signals are transmitted across the cell membrane by the CD3 chains CD3D, CD3E, CD3G and CD3Z. All CD3 chains contain immunoreceptor tyrosine-based activation motifs (ITAMs) in their cytoplasmic domain.

Synonyms : CD3e; CD3E; T3E; FLJ18683; TCRE; CD3-epsilon; IMD18

For research use only. Not intended for human or animal clinical trials, therapeutic or diagnostic use.

Manufacturer: Nanjing GenScript Biotech Co., Ltd. No. 28Yongxi Road, Jiangning District, Nanjing, Jiangsu, China