

Rev03
 Update: Aug,08,2025

DATASHEET

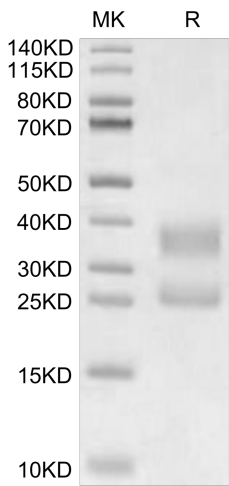
CD3E&CD3D [Biotin], His, Human

Cat. No.: Z03992

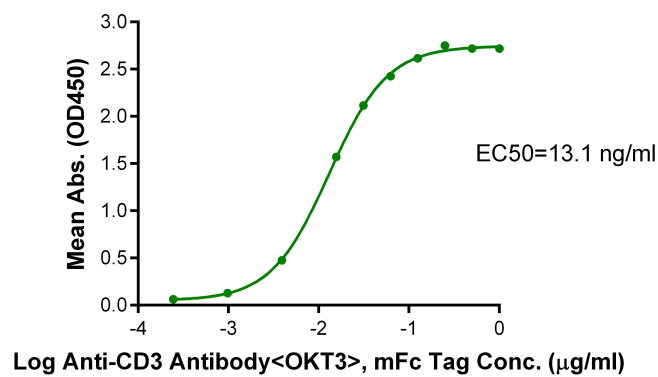
Product Introduction

| | |
|-------------------------------------|--|
| Species | Human |
| Protein Construction | <div style="display: flex; align-items: center; justify-content: space-between;"> <div style="background-color: #0056b3; color: white; padding: 5px; text-align: center;"> CD3E & CD3D [Asp23-Asp126 (CD3E) & Phe22-Ala105 (CD3D)] Accession # P07766 (CD3E) & P04234 (CD3D) </div> <div style="background-color: #8bc34a; color: white; padding: 5px; text-align: center;"> His </div> </div> <div style="display: flex; justify-content: space-between; margin-top: 5px; font-size: small;"> N-term C-term </div> |
| Conjugate | Biotin |
| Purity | > 95% as determined by Bis-Tris PAGE > 95% as determined by HPLC |
| Endotoxin Level | Less than 1EU per µg by the LAL method. |
| Biological Activity | Measured by its binding ability in a functional ELISA. Immobilized CD3E&CD3D [Biotin], His, Human at 0.5µg/ml (100µl/well) on the streptavidin precoated plate (5 µg/ml) can bind OKT3, mFc Tag. Test result was comparable to standard batch. |
| Expression System | HEK293 |
| Theoretical Molecular Weight | 17.9 kDa (CD3E) and 16.7 kDa (CD3D) |
| Apparent Molecular Weight | Due to glycosylation, the protein migrates to 25-40 kDa based on Bis-Tris PAGE result. |
| Formulation | Lyophilized from a 0.22 µm filtered solution in PBS, (pH 7.4). |
| Reconstitution | Centrifuge the tube before opening. Reconstituting to a concentration more than 100 µg/ml is recommended. Dissolve the lyophilized protein in distilled water. |
| Storage & Stability | Upon receiving, the product remains stable up to 6 months at -20 °C or below. Upon reconstitution, the product should be stable for 3 months at -80 °C. Avoid repeated freeze-thaw cycles. |

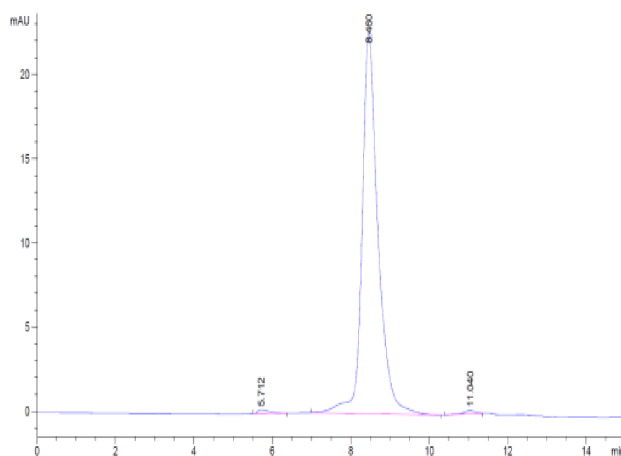
Examples



CD3E&CD3D [Biotin], His, Human on Bis-Tris PAGE under reduced condition. The purity is greater than 95%.



Immobilized CD3E&CD3D [Biotin], His, Human, His Tag at 0.5 µg/ml (100 µl/well) on the streptavidin precoated plate(5 µg/ml). Dose response curve for Anti-CD3 Antibody, mFc Tag with the EC50 of 13.1 ng/ml determined by ELISA.



The purity of CD3E&CD3D [Biotin], His, Human is greater than 95% as determined by SEC-HPLC.

Background

Target Background : T-cell surface glycoprotein CD3 epsilon&CD3 delta chain, also known as CD3E&CD3D, are single-pass type I membrane proteins. When antigen presenting cells (APCs) activate T-cell receptor (TCR), TCR-mediated signals are transmitted across the cell membrane by the CD3 chains CD3D, CD3E, CD3G and CD3Z. All CD3 chains contain immunoreceptor tyrosine-based activation motifs (ITAMs) in their cytoplasmic domain.

Synonyms : CD3; CD3e; CD3E; CD3d; T3D; CD3D; CD3E&CD3D; CD3 delta&CD3 epsilon

Confidential and Privileged



For research use only. Not intended for human or animal clinical trials, therapeutic or diagnostic use.

Manufacturer: Nanjing GenScript Biotech Co., Ltd. No. 28Yongxi Road, Jiangning District, Nanjing, Jiangsu, China

GenScript USA, Inc.

860 Centennial Ave. Piscataway, NJ 08854

Tel: 1-732-885-9188