

Rev03
 Update: Aug,08,2025

DATASHEET

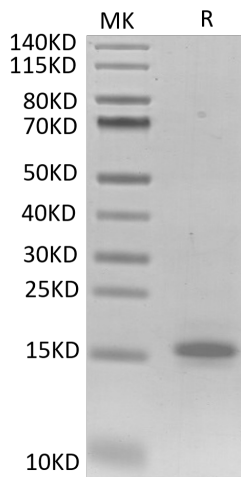
CD3E/CD3 epsilon, His, Human

Cat. No.: Z04007

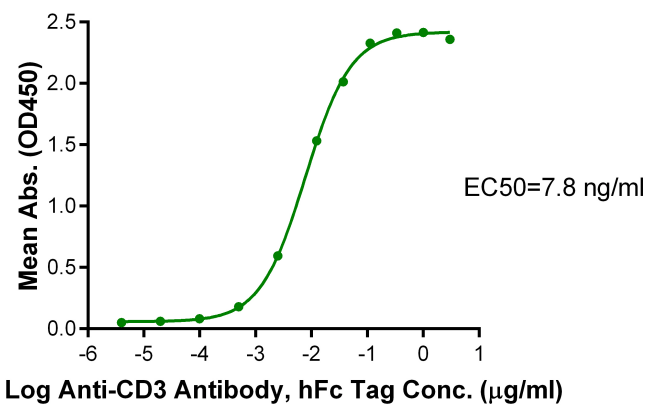
Product Introduction

Species	Human
Protein Construction	<div style="display: flex; justify-content: space-between; align-items: center;"> <div style="background-color: #0056b3; color: white; padding: 5px; text-align: center;"> CD3E/CD3 epsilon (Asp23-Asp126) Accession # P07766 </div> <div style="background-color: #76b82a; color: white; padding: 5px; text-align: center;"> His </div> </div> <div style="display: flex; justify-content: space-between; margin-top: 5px; font-size: small;"> N-term C-term </div>
Purity	> 95% as determined by Bis-Tris PAGE
Endotoxin Level	Less than 1EU per µg by the LAL method.
Biological Activity	Measured by its binding ability in a functional ELISA. Immobilized CD3E/CD3 epsilon, His, Human at 1µg/ml (100µl/well) on the plate can bind Anti-CD3 Antibody, hFc Tag. Test result was comparable to standard batch.
Expression System	HEK293
Theoretical Molecular Weight	12.6 kDa
Apparent Molecular Weight	Due to glycosylation, the protein migrates to 14-18 kDa based on Bis-Tris PAGE result.
Formulation	Lyophilized from a 0.22 µm filtered solution in PBS, (pH 7.4).
Reconstitution	Centrifuge the tube before opening. Reconstituting to a concentration more than 100 µg/ml is recommended. Dissolve the lyophilized protein in distilled water.
Storage & Stability	Upon receiving, the product remains stable up to 6 months at -20 °C or below. Upon reconstitution, the product should be stable for 3 months at -80 °C. Avoid repeated freeze-thaw cycles.

Examples



CD3E/CD3 epsilon, His, Human on Bis-Tris PAGE under reduced condition. The purity is greater than 95%.



Immobilized CD3E/CD3 epsilon, His, Human, His Tag at 1 µg/ml (100 µL/well) on the plate. Dose response curve for Anti-CD3 Antibody, hFc Tag with the EC50 of 7.8 ng/ml determined by ELISA.

Background

Target Background : CD3E, is a single-pass type I membrane protein. CD3 (cluster of differentiation 3) T cell co-receptor helps to activate both the cytotoxic T cell (CD8 naive T cells) and also T helper cells (CD4 naive T cells). It consists of a protein complex and is composed of four distinct chains. In mammals, the complex contains a CD3γ chain, a CD3δ chain, and two CD3ε chains.

Synonyms : CD3e; CD3E; T3E; FLJ18683; TCRE; CD3-epsilon; IMD18

For research use only. Not intended for human or animal clinical trials, therapeutic or diagnostic use.

Manufacturer: Nanjing GenScript Biotech Co., Ltd. No. 28Yongxi Road, Jiangning District, Nanjing, Jiangsu, China