

Rev03  
 Update: Aug,08,2025

**DATASHEET**

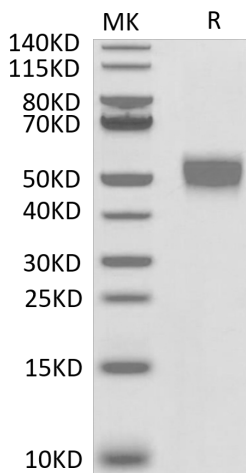
# CD24, Llama Fc Chimera, Human

Cat. No.: Z04177

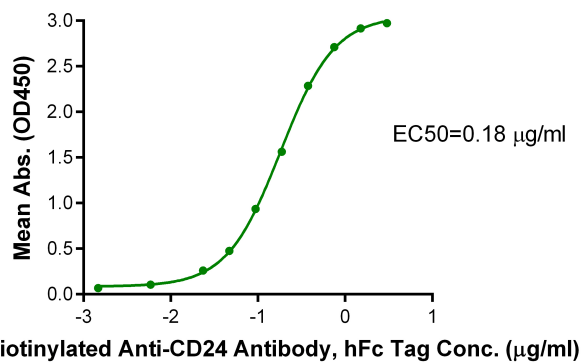
## Product Introduction

<b>Species</b>	Human
<b>Protein Construction</b>	<div style="display: flex; align-items: center; justify-content: center;"> <div style="background-color: #0056b3; color: white; padding: 5px; margin-right: 10px;"> <b>CD24 (Ser27-Gly59)</b>            Accession # P25063         </div> <div style="background-color: #76b82a; color: white; padding: 5px; margin-right: 10px;"> <b>Llama Fc</b> </div> </div> <div style="display: flex; justify-content: space-around; margin-top: 5px;"> <span>N-term</span> <span>C-term</span> </div>
<b>Purity</b>	> 95% as determined by Bis-Tris PAGE > 94% as determined by HPLC
<b>Endotoxin Level</b>	Less than 1EU per µg by the LAL method.
<b>Biological Activity</b>	Measured by its binding ability in a functional ELISA. Immobilized CD24, Llama Fc Chimera, Human at 2µg/ml (100µl/well) on the plate can bind Biotinylated Anti-CD24 Antibody, hFc Tag. Test result was comparable to standard batch.
<b>Expression System</b>	HEK293
<b>Theoretical Molecular Weight</b>	30.4 kDa
<b>Apparent Molecular Weight</b>	Due to glycosylation, the protein migrates to 48-58 kDa based on Bis-Tris PAGE result.
<b>Formulation</b>	Lyophilized from a 0.22 µm filtered solution in PBS, (pH 7.4).
<b>Reconstitution</b>	Centrifuge the tube before opening. Reconstituting to a concentration more than 100 µg/ml is recommended. Dissolve the lyophilized protein in distilled water.
<b>Storage &amp; Stability</b>	Upon receiving, the product remains stable up to 6 months at -20 °C or below. Upon reconstitution, the product should be stable for 3 months at -80 °C. Avoid repeated freeze-thaw cycles.

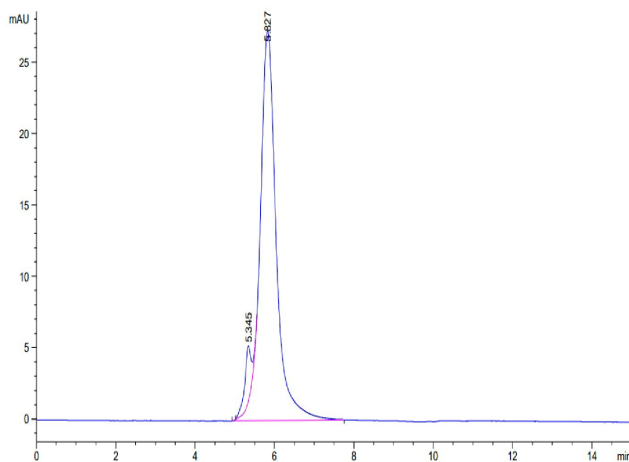
## Examples



CD24, Llama Fc Chimera, Human on Bis-Tris PAGE under reduced condition. The purity is greater than 95%.



Immobilized CD24, Llama Fc Chimera, Human, hFc Tag at 2 µg/ml (100 µl/well) on the plate. Dose response curve for Biotinylated Anti-CD24 Antibody, hFc Tag with the EC50 of 0.18 µg/ml determined by ELISA.



The purity of CD24, Llama Fc Chimera, Human is greater than 90% as determined by SEC-HPLC.

## Background

**Target Background :** CD24 is a sialoglycoprotein expressed at the surface of most B lymphocytes and differentiating neuroblasts. It is also expressed on neutrophils and neutrophil precursors from the myelocyte stage onwards. The potential for targeting CD24 in cancer therapy seems promising, as CD24 is overexpressed in many human cancers.

**Synonyms :** CD 24; CD24 molecule; CD24A; FLJ22950; FLJ43543; MGC75043

**For research use only. Not intended for human or animal clinical trials, therapeutic or diagnostic use.**

**GenScript USA, Inc.**

860 Centennial Ave. Piscataway, NJ 08854

Tel: 1-732-885-9188

Confidential and Privileged



Manufacturer: Nanjing GenScript Biotech Co., Ltd. No. 28Yongxi Road, Jiangning District, Nanjing, Jiangsu, China

---

**GenScript USA, Inc.**

860 Centennial Ave. Piscataway, NJ 08854

Tel: 1-732-885-9188