

Rev03
Update: Aug,08,2025**DATASHEET**

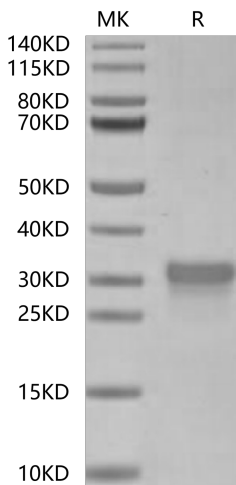
CD8 alpha/CD8A, His, Human

Cat. No.: Z04228

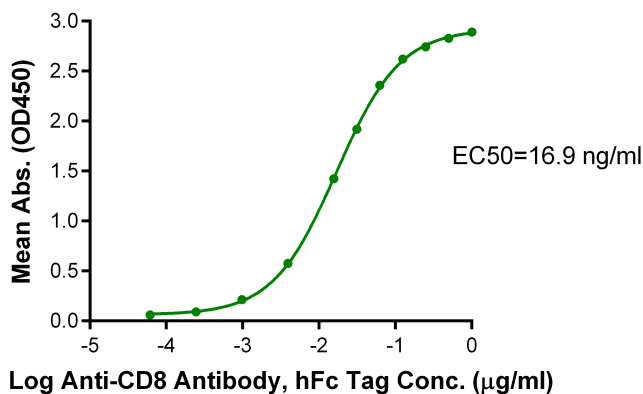
Product Introduction

Species	Human				
Protein Construction	<table><tr><td>CD8 alpha/CD8A (Ser22-Asp182) Accession # P01732-1</td><td>His</td></tr><tr><td>N-term</td><td>C-term</td></tr></table>	CD8 alpha/CD8A (Ser22-Asp182) Accession # P01732-1	His	N-term	C-term
CD8 alpha/CD8A (Ser22-Asp182) Accession # P01732-1	His				
N-term	C-term				
Purity	> 95% as determined by Bis-Tris PAGE				
Endotoxin Level	Less than 1EU per µg by the LAL method.				
Biological Activity	Measured by its binding ability in a functional ELISA. Immobilized CD8 alpha/CD8A, His, Human at 5µg/ml (100µl/well) on the plate can bind Anti-CD8 Antibody, hFc Tag. Test result was comparable to standard batch.				
Expression System	HEK293				
Theoretical Molecular Weight	18.70 kDa				
Apparent Molecular Weight	Due to glycosylation, the protein migrates to 28-35 kDa based on Bis-Tris PAGE result.				
Formulation	Lyophilized from a 0.22 µm filtered solution in PBS, (pH 7.4).				
Reconstitution	Centrifuge the tube before opening. Reconstituting to a concentration more than 100 µg/ml is recommended. Dissolve the lyophilized protein in distilled water.				
Storage & Stability	Upon receiving, the product remains stable up to 6 months at -20 °C or below. Upon reconstitution, the product should be stable for 3 months at -80 °C. Avoid repeated freeze-thaw cycles.				

Examples



CD8 alpha/CD8A, His, Human on Bis-Tris PAGE under reduced condition. The purity is greater than 95%.



Immobilized CD8 alpha/CD8A, His, Human, His Tag at 5 µg/ml (100 µL/well) on the plate. Dose response curve for Anti-CD8 Antibody, hFc Tag with the EC50 of 16.9 ng/ml determined by ELISA.

Background

Target Background : CD8 alpha enhances the responses of antigen-specific CTL activated through TCR through binding MHC class I, favoring lipid raft partitioning of TCR, and inducing intracellular signaling. CD8 alpha is also found on dendritic cells and rat macrophages, but whether CD8 alpha enhances responses of a partner receptor, like TCR, to activate these cells is not known.

Synonyms : CD8a; Lyt-2; CD8; Leu2; MAL; p32; CD8a molecule; OKT8 T-cell antigen

For research use only. Not intended for human or animal clinical trials, therapeutic or diagnostic use.

Manufacturer: Nanjing GenScript Biotech Co., Ltd. No. 28Yongxi Road, Jiangning District, Nanjing, Jiangsu, China