

Rev03
 Update: Aug,08,2025

DATASHEET

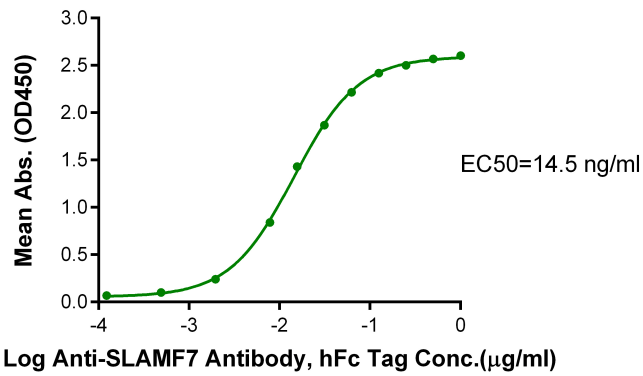
SLAMF7/CRACC/CD319 mFc Chimera, Human

Cat. No.: Z04284

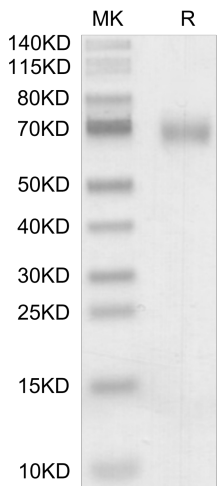
Product Introduction

Species	Human
Protein Construction	<div style="display: flex; justify-content: space-around; align-items: center;"> <div style="background-color: #0056b3; color: white; padding: 5px; text-align: center;"> SLAMF7/CRACC/CD319 (Ser23-Met22) Accession # Q9NQ25-1 </div> <div style="background-color: #76b82a; color: white; padding: 5px; text-align: center;"> mFc (IgG1) </div> </div> <div style="display: flex; justify-content: space-around; margin-top: 5px;"> N-term C-term </div>
Purity	> 95% as determined by BisTris PAGE > 95% as determined by HPLC
Endotoxin Level	Less than 1EU per µg by the LAL method.
Biological Activity	Measured by its binding ability in a functional ELISA. Immobilized SLAMF7/CRACC/CD319 mFc Chimera, Human at 1µg/ml (100µl/Well) on the plate can bind AntiSLAMF7 Antibody, hFc Tag. Test result was comparable to standard batch.
Expression System	HEK293
Theoretical Molecular Weight	48.8 kDa
Apparent Molecular Weight	Due to glycosylation, the protein migrates to 68-72 kDa based on Bis-Tris PAGE result.
Formulation	Lyophilized from 0.22µm filtered solution in PBS (pH 7.4).
Reconstitution	Centrifuge the tube before opening. Reconstituting to a concentration more than 100 µg/ml is recommended. Dissolve the lyophilized protein in distilled water.
Storage & Stability	Upon receiving, the product remains stable up to 6 months at -20 °C or below. Upon reconstitution, the product should be stable for 3 months at -80 °C. Avoid repeated freeze-thaw cycles.

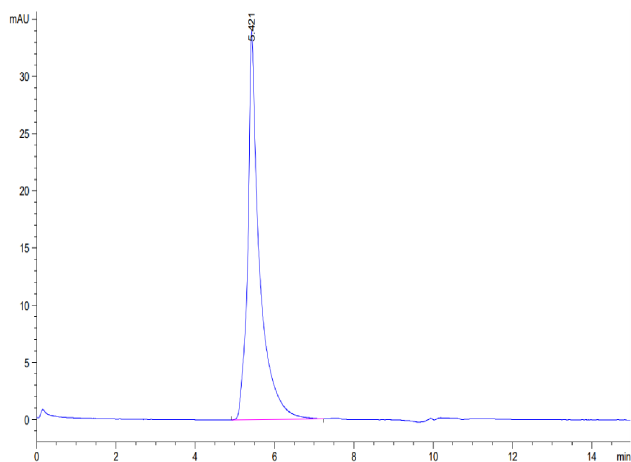
Examples



Immobilized SLAMF7/CRACC/CD319 mFc Chimera, Human, mFc Tag at 1 µg/ml (100 µl/well) on the plate. Dose response curve for Anti-SLAMF7 Antibody, hFc Tag with the EC50 of 14.5 ng/ml determined by ELISA.



SLAMF7/CRACC/CD319 mFc Chimera, Human on Bis-Tris PAGE under reduced condition. The purity is greater than 95%.



The purity of SLAMF7/CRACC/CD319 mFc Chimera, Human is greater than 95% as determined by SEC-HPLC.

Background

Target Background : CD2-like receptor activating cytotoxic cells (CRACC), also known as CS1, novel Ly9, SLAMF7, and CD319, is a 65-75 kDa type I transmembrane glycoprotein in the SLAM subgroup of the CD2 family. Self-ligand receptor of the signaling lymphocytic activation molecule (SLAM) family. SLAM receptors triggered by homo- or heterotypic cell-cell interactions are modulating the activation and differentiation of a wide variety of immune cells and thus are involved in the regulation and interconnection of both innate and adaptive immune response.

Synonyms : CD2 subset 1; CRACC; Novel Ly9; CD319; SLAMF7; CS1; 19A; FOAP-12

For research use only. Not intended for human or animal clinical trials, therapeutic or diagnostic use.

Manufacturer: Nanjing GenScript Biotech Co., Ltd. No. 28Yongxi Road, Jiangning District, Nanjing, Jiangsu, China