

Rev03  
 Update: Aug,08,2025

**DATASHEET**

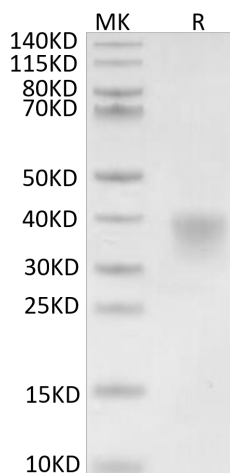
# CD8 alpha/CD8A, His, Mouse

Cat. No.: Z04331

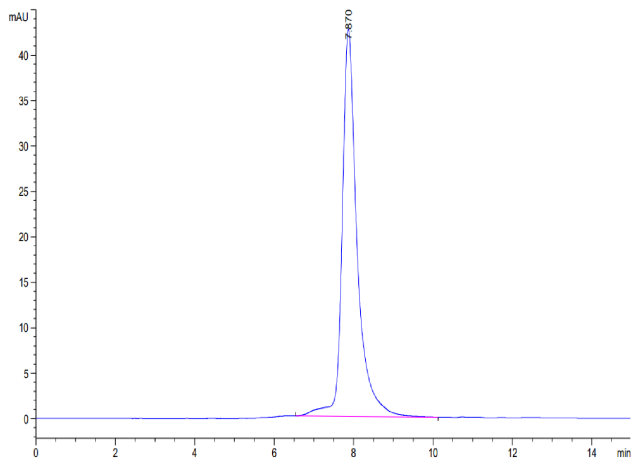
## Product Introduction

<b>Species</b>	Mouse
<b>Protein Construction</b>	<div style="display: flex; align-items: center; justify-content: center;"> <div style="background-color: #0056b3; color: white; padding: 5px; text-align: center;"> <b>CD8 alpha/CD8A (Lys28-Tyr196)</b>            Accession # P01731-1         </div> <div style="background-color: #76b82a; color: white; padding: 5px; text-align: center; margin-left: 10px;"> <b>His</b> </div> </div> <div style="display: flex; justify-content: space-around; margin-top: 5px;"> <span>N-term</span> <span>C-term</span> </div>
<b>Purity</b>	> 95% as determined by Bis-Tris PAGE > 95% as determined by HPLC
<b>Endotoxin Level</b>	Less than 1EU per µg by the LAL method.
<b>Expression System</b>	HEK293
<b>Theoretical Molecular Weight</b>	20 kDa
<b>Apparent Molecular Weight</b>	Due to glycosylation, the protein migrates to 32-42 kDa based on Bis-Tris PAGE result.
<b>Formulation</b>	Lyophilized from a 0.22 µm filtered solution in PBS, (pH 7.4).
<b>Reconstitution</b>	Centrifuge the tube before opening. Reconstituting to a concentration more than 100 µg/ml is recommended. Dissolve the lyophilized protein in distilled water.
<b>Storage &amp; Stability</b>	Upon receiving, the product remains stable up to 6 months at -20 °C or below. Upon reconstitution, the product should be stable for 3 months at -80 °C. Avoid repeated freeze-thaw cycles.

## Examples



CD8 alpha/CD8A, His, Mouse on Bis-Tris PAGE under reduced condition. The purity is greater than 95%.



The purity of CD8 alpha/CD8A, His, Mouse is greater than 95% as determined by SEC-HPLC.

## Background

**Target Background :** CD8 alpha enhances the responses of antigen-specific CTL activated through TCR through binding MHC class I, favoring lipid raft partitioning of TCR, and inducing intracellular signaling. CD8 alpha is also found on dendritic cells and rat macrophages, but whether CD8 alpha enhances responses of a partner receptor, like TCR, to activate these cells is not known.

**Synonyms :** CD8a; Lyt-2; CD8; Leu2; MAL; p32; CD8a molecule; OKT8 T-cell antigen

**For research use only. Not intended for human or animal clinical trials, therapeutic or diagnostic use.**

Manufacturer: Nanjing GenScript Biotech Co., Ltd. No. 28Yongxi Road, Jiangning District, Nanjing, Jiangsu, China