

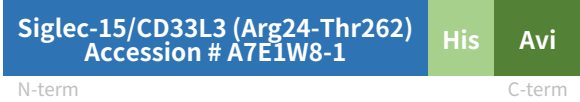
Rev03
 Update: Aug,08,2025

DATASHEET

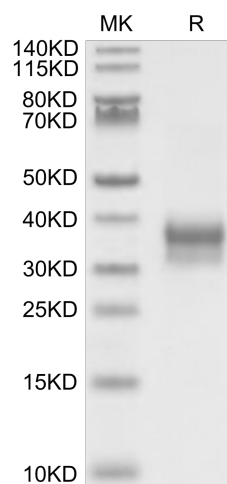
Siglec-15/CD33L3, His, Mouse

Cat. No.: Z06351

Product Introduction

Species	Mouse
Protein Construction	 <p>Siglec-15/CD33L3 (Arg24-Thr262) Accession # A7E1W8-1</p> <p>N-term His Avi C-term</p>
Purity	> 95% as determined by Bis-Tris PAGE
Endotoxin Level	Less than 1EU per µg by the LAL method.
Expression System	HEK293
Theoretical Molecular Weight	26.7 kDa
Apparent Molecular Weight	Due to glycosylation, the protein migrates to 30-40 kDa based on Bis-Tris PAGE result.
Formulation	Lyophilized from 0.22µm filtered solution in 20mM PB, 0.5M NaCl, 0.1M L-arginine (pH 7.4).
Reconstitution	Centrifuge the tube before opening. Reconstituting to a concentration more than 100 µg/ml is recommended. Dissolve the lyophilized protein in distilled water.
Storage & Stability	Upon receiving, the product remains stable up to 6 months at -20 °C or below. Upon reconstitution, the product should be stable for 3 months at -80 °C. Avoid repeated freeze-thaw cycles.

Examples



Siglec-15/CD33L3, His, Mouse on Bis-Tris PAGE under reduced condition. The purity is greater than 95%.

Background

Target Background : Siglec-15 is a transmembrane glycoprotein in the Siglec family of sialic acid-binding immune regulatory molecules. Mature human Siglec-15 consists of a 244 amino acid extracellular domain (ECD) with two Ig-like domains, a 21 aa transmembrane segment, and a 44 aa cytoplasmic domain. Siglec-15 is a potential therapeutic target for osteoporosis and plays a conserved regulatory role in the immune system of vertebrates.

Synonyms : CD33 molecule-like 3; CD33L3; HsT1361; Siglec15; CD33 antigen-like 3; SIGLEC-15

For research use only. Not intended for human or animal clinical trials, therapeutic or diagnostic use.

Manufacturer: Nanjing GenScript Biotech Co., Ltd. No. 28Yongxi Road, Jiangning District, Nanjing, Jiangsu, China