

Rev03  
 Update: Aug,08,2025

**DATASHEET**

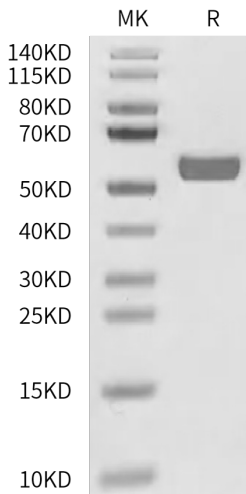
# HLA-A\*02:01&B2M&MAGE-A1 (KVLEYVIKV) Monomer[Biotin], His & Avi, Human

Cat. No.: Z06469

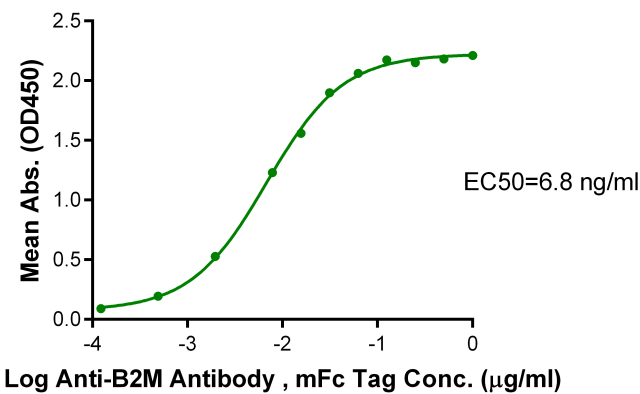
## Product Introduction

<b>Species</b>	Human
<b>Protein Construction</b>	<div style="background-color: #0056b3; color: white; padding: 5px; text-align: center;">           HLA-A*02:01&amp;B2M&amp;MAGE-A1 (KVLEYVIKV) Monomer [Gly25-Thr305(HLA-A*02:01), Ile21-Met119(B2M) and KVLEYVIKV peptide]            Accession # A0A140T913(HLA-A*02:01)&amp;P61769(B2M)&amp;KVLEYVIKV         </div> <div style="display: flex; justify-content: space-between; align-items: center; margin-top: 5px;"> <span>N-term</span> <div style="background-color: #90c17e; padding: 2px 5px;">His</div> <div style="background-color: #4f7942; padding: 2px 5px;">Avi</div> <span>C-term</span> </div>
<b>Conjugate</b>	Biotin
<b>Purity</b>	> 95% as determined by BisTris PAGE > 95% as determined by HPLC
<b>Endotoxin Level</b>	Less than 1EU per µg by the LAL method.
<b>Biological Activity</b>	Measured by its binding ability in a functional ELISA. Immobilized HLA-A*02:01&B2M&MAGE-A1 (KVLEYVIKV) Monomer[Biotin], His & Avi, Human at 0.5µg/ml (100µl/Well) on streptavidin (5µg/ml) precoated plate can bind Anti-B2M Antibody, mFc Tag. Test result was comparable to standard batch.
<b>Expression System</b>	HEK293
<b>Theoretical Molecular Weight</b>	50.50 kDa
<b>Apparent Molecular Weight</b>	Due to glycosylation, the protein migrates to 53-65 kDa based on Bis-Tris PAGE result.
<b>Formulation</b>	Lyophilized from 0.22 µm filtered solution in PBS (pH 7.4).
<b>Reconstitution</b>	Centrifuge the tube before opening. Reconstituting to a concentration more than 100 µg/ml is recommended. Dissolve the lyophilized protein in distilled water.
<b>Storage &amp; Stability</b>	Upon receiving, the product remains stable up to 6 months at -20 °C or below. Upon reconstitution, the product should be stable for 3 months at -80 °C. Avoid repeated freeze-thaw cycles.

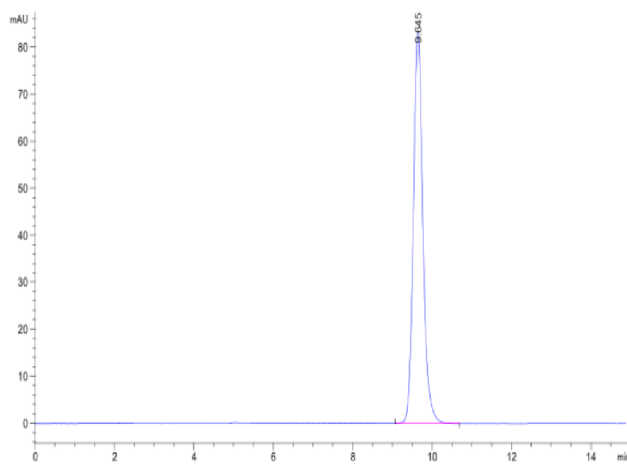
## Examples



HLA-A\*02:01&B2M&MAGE-A1 (KVLEYVIKV) Monomer[Biotin], His & Avi, Human on Bis-Tris PAGE under reduced condition. The purity is greater than 95%.



Immobilized HLA-A\*02:01&B2M&MAGE-A1 (KVLEYVIKV) Monomer[Biotin], His & Avi, Human, His Tag at 0.5 µg/ml (100 µl/Well) on streptavidin(5 µg/ml) precoated plate. Dose response curve for Anti-B2M Antibody, mFc Tag with the EC50 of 6.8 ng/ml determined by ELISA.



The purity of HLA-A\*02:01&B2M&MAGE-A1 (KVLEYVIKV) Monomer[Biotin], His & Avi, Human is greater than 95% as determined by SEC-HPLC.

## Background

**Target Background :** MAGE-A1 belongs to the chromosome X-clustered genes of cancer-testis antigen family and is normally expressed in the human germ line but is also overexpressed in various tumors.

**Synonyms :** MAGE-A1; MAGE A1; CT1.1; MAGE-1 antigen; MAGE-1; MZ2-E; MAGE1; MAGE1A

**For research use only. Not intended for human or animal clinical trials, therapeutic or diagnostic use.**

**GenScript USA, Inc.**

860 Centennial Ave. Piscataway, NJ 08854

Tel: 1-732-885-9188

Confidential and Privileged



Manufacturer: Nanjing GenScript Biotech Co., Ltd. No. 28Yongxi Road, Jiangning District, Nanjing, Jiangsu, China

---

**GenScript USA, Inc.**

860 Centennial Ave. Piscataway, NJ 08854

Tel: 1-732-885-9188