

Rev03
 Update: Aug,08,2025
DATASHEET

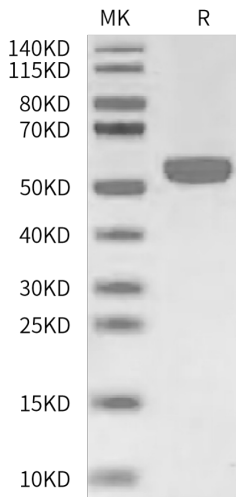
HLA-A*02:01&B2M&PRAME (ALYVDSLFFL) Monomer[Biotin], His & Avi, Human

Cat. No.: Z06481

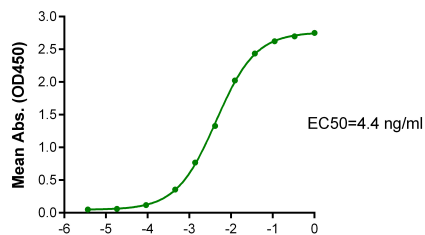
Product Introduction

| | |
|-------------------------------------|--|
| Species | Human |
| Protein Construction | <div style="background-color: #0056b3; color: white; padding: 5px;"> HLA-A*02:01&B2M&PRAME (ALYVDSLFFL) Monomer [Gly25-Thr305(HLA-A*02:01), Ile21-Met119(B2M) and ALYVDSLFFL peptide] Accession # P79603(HLA-A*02:01)&P61769(B2M)&ALYVDSLFFL </div> <div style="display: flex; justify-content: space-between; align-items: center; margin-top: 5px;"> N-term <div style="background-color: #90c090; padding: 2px 5px;">His</div> <div style="background-color: #4f81bd; padding: 2px 5px;">Avi</div> C-term </div> |
| Conjugate | Biotin |
| Purity | > 95% as determined by BisTris PAGE > 95% as determined by HPLC |
| Endotoxin Level | Less than 1EU per µg by the LAL method. |
| Biological Activity | Measured by its binding ability in a functional ELISA. Immobilized HLA-A*02:01&B2M&PRAME (ALYVDSLFFL) Monomer[Biotin], His & Avi, Human at 1µg/ml (100µl/well) on the streptavidin precoated plate (5µg/ml) can bind Anti-HLA-A*02:01&B2M&PRAME (ALYVDSLFFL) Antibody, hFc Tag. Test result was comparable to standard batch. |
| Expression System | HEK293 |
| Theoretical Molecular Weight | 50.60 kDa |
| Apparent Molecular Weight | Due to glycosylation, the protein migrates to 50-65 kDa based on Bis-Tris PAGE result. |
| Formulation | Lyophilized from 0.22 µm filtered solution in PBS, 100mM L-arginine (pH 7.4). |
| Reconstitution | Centrifuge the tube before opening. Reconstituting to a concentration more than 100 µg/ml is recommended. Dissolve the lyophilized protein in distilled water. |
| Storage & Stability | Upon receiving, the product remains stable up to 6 months at -20 °C or below. Upon reconstitution, the product should be stable for 3 months at -80 °C. Avoid repeated freeze-thaw cycles. |

Examples

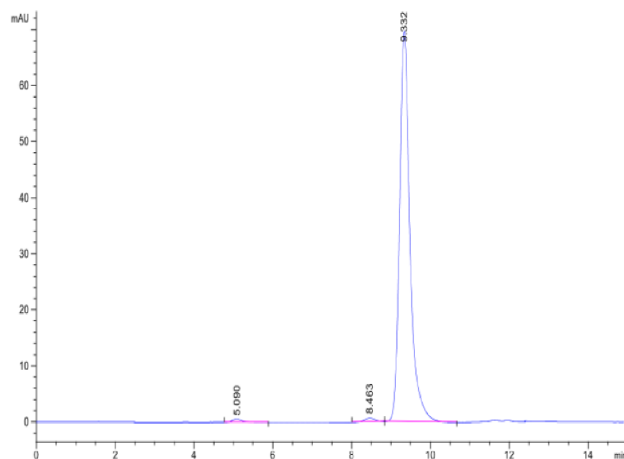


HLA-A*02:01&B2M&PRAME (ALYVDSLFFL) Monomer[Biotin], His & Avi, Human on Bis-Tris PAGE under reduced condition. The purity is greater than 95%.



Log Anti-HLA-A*02:01&B2M&PRAME (ALYVDSLFFL) Antibody, hFc Tag Conc. ($\mu\text{g/ml}$)

Immobilized HLA-A*02:01&B2M&PRAME (ALYVDSLFFL) Monomer[Biotin], His & Avi, Human, His Tag at $1\ \mu\text{g/ml}$ ($100\ \mu\text{l/Well}$) on streptavidin($5\ \mu\text{g/ml}$) precoated plate. Dose response curve for Anti-HLA-A*02:01&B2M&PRAME (ALYVDSLFFL) Antibody, hFc Tag with the EC50 of $4.4\ \text{ng/ml}$ determined by ELISA.



The purity of HLA-A*02:01&B2M&PRAME (ALYVDSLFFL) Monomer[Biotin], His & Avi, Human is greater than 95% as determined by SEC-HPLC.

Background

Target Background : PRAME (PReferentially expressed Antigen in MELanoma) is a melanoma-associated antigen expressed in cutaneous and ocular melanomas and some other malignant neoplasms, while its expression in normal tissue and benign tumors is limited.

Synonyms : PRAME; OIP-4; OIP4; MAPE

For research use only. Not intended for human or animal clinical trials, therapeutic or diagnostic use.

Manufacturer: Nanjing GenScript Biotech Co., Ltd. No. 28Yongxi Road, Jiangning District, Nanjing, Jiangsu, China

