

Rev03
 Update: Aug,08,2025
DATASHEET

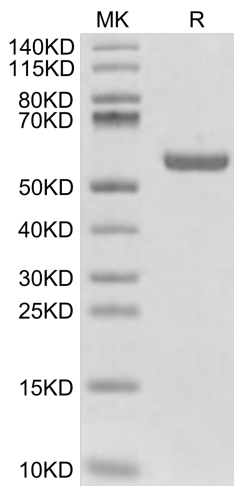
HLA-A*02:01&B2M&Survivin (LMLGEFLKL) Monomer[Biotin], His & Avi, Human

Cat. No.: Z06483

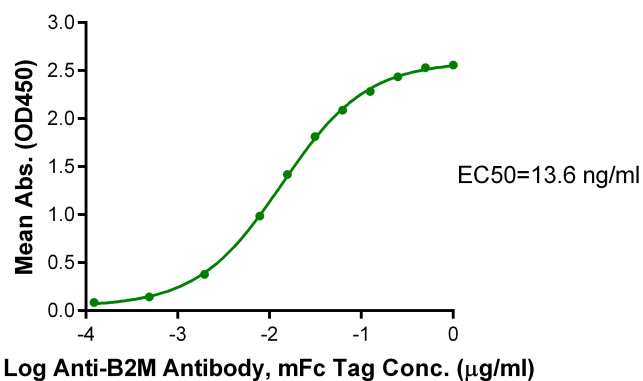
Product Introduction

Species	Human
Protein Construction	<div style="display: flex; align-items: center; justify-content: space-between;"> <div style="background-color: #0056b3; color: white; padding: 5px; text-align: center;"> HLA-A*02:01&B2M&Survivin (LMLGEFLKL) Monomer [Gly25-Thr305(HLA-A*02:01),Ile21-Met119(B2M) and LMLGEFLKL peptide] Accession # A0A140T913(HLA-A*02:01)&P61769(B2M)&LMLGEFLKL </div> <div style="background-color: #90c090; padding: 5px; text-align: center;">His</div> <div style="background-color: #4f81bd; padding: 5px; text-align: center;">Avi</div> </div> <p style="text-align: center; margin-top: 5px;">N-term C-term</p>
Conjugate	Biotin
Purity	> 95% as determined by BisTris PAGE > 95% as determined by HPLC
Endotoxin Level	Less than 1EU per µg by the LAL method.
Biological Activity	Measured by its binding ability in a functional ELISA. Immobilized Biotinylated Human HLA-A*02:01&B2M&Survivin (LMLGEFLKL) Monomer, His Tag at 1µg/ml (100µl/Well) on streptavidin (5µg/ml) precoated plate can bind Anti-B2M Antibody, mFc Tag. Test result was comparable to standard batch.
Expression System	HEK293
Theoretical Molecular Weight	50.5 kDa
Apparent Molecular Weight	Due to glycosylation, the protein migrates to 55-63 kDa based on Bis-Tris PAGE result.
Formulation	Lyophilized from 0.22 µm filtered solution in PBS (pH 7.4).
Reconstitution	Centrifuge the tube before opening. Reconstituting to a concentration more than 100 µg/ml is recommended. Dissolve the lyophilized protein in distilled water.
Storage & Stability	Upon receiving, the product remains stable up to 6 months at -20 °C or below. Upon reconstitution, the product should be stable for 3 months at -80 °C. Avoid repeated freeze-thaw cycles.

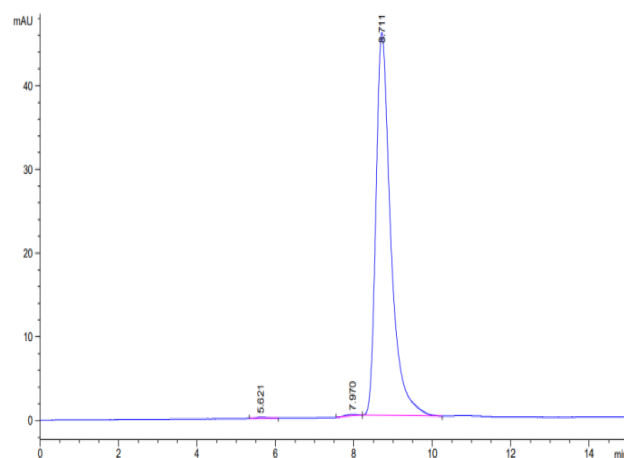
Examples



HLA-A*02:01&B2M&Survivin (LMLGEFLKL) Monomer[Biotin], His & Avi, Human on Bis-Tris PAGE under reduced condition. The purity is greater than 95%.



Immobilized HLA-A*02:01&B2M&Survivin (LMLGEFLKL) Monomer[Biotin], His & Avi, Human, His Tag at 1 µg/ml (100 µl/Well) on streptavidin(5 µg/ml) precoated plate. Dose response curve for Anti-B2M Antibody, mFc Tag with the EC50 of 13.6 ng/ml determined by ELISA.



The purity of HLA-A*02:01&B2M&Survivin (LMLGEFLKL) Monomer[Biotin], His & Avi, Human is greater than 95% as determined by SEC-HPLC.

Background

Target Background : Survivin (also known as BIRC5) is an evolutionarily conserved eukaryotic protein that is essential for cell division and can inhibit cell death. Normally it is only expressed in actively proliferating cells, but is upregulated in most, if not all cancers; consequently, it has received significant attention as a potential oncotherapeutic target.

Synonyms : Survivin; MHC; MHC I; BIRC5; API4; EPR-1; IAP4; survivin variant 3 alpha

For research use only. Not intended for human or animal clinical trials, therapeutic or diagnostic use.

Manufacturer: Nanjing GenScript Biotech Co., Ltd. No. 28Yongxi Road, Jiangning District, Nanjing, Jiangsu, China