

Rev03
 Update: Aug,08,2025

DATASHEET

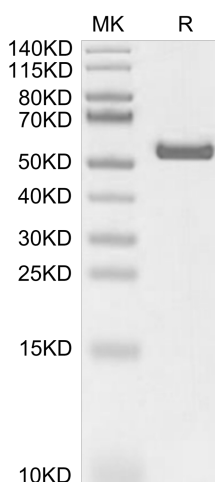
HLA-A*11:01&B2M&KRAS G12V (VVGAVGVGK) Monomer[Biotin], His & Avi, Human

Cat. No.: Z06501

Product Introduction

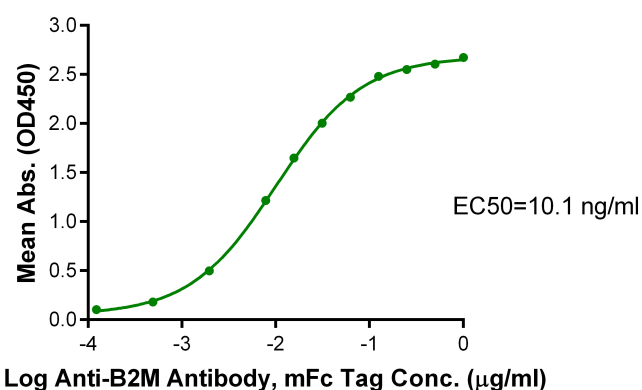
Species	Human
Protein Construction	<div style="background-color: #0056b3; color: white; padding: 5px; display: inline-block;"> HLA-A*11:01&B2M&KRAS G12V (VVGAVGVGK) Monomer [Gly25-Thr305(HLA-A*11:01), Ile21-Met119(B2M) and VVGAVGVGK peptide] Accession # AAV53343.1(HLA-A*11:01)&P61769(B2M)&VVGAVGVGK </div> <div style="display: inline-block; vertical-align: middle; margin-left: 10px;"> <div style="background-color: #90c040; padding: 2px 5px; font-weight: bold;">His</div> <div style="background-color: #008000; padding: 2px 5px; font-weight: bold; margin-left: 5px;">Avi</div> </div> <p style="margin-top: 5px; font-size: small;">N-term C-term</p>
Conjugate	Biotin
Purity	> 95% as determined by BisTris PAGE > 95% as determined by HPLC
Endotoxin Level	Less than 1EU per µg by the LAL method.
Biological Activity	Measured by its binding ability in a functional ELISA. Immobilized HLA-A*11:01&B2M&KRAS G12V (VVGAVGVGK) Monomer[Biotin], His & Avi, Human at 1 µg/ml (100 µl/well) on the streptavidin precoated plate (5 µg/ml) can bind Anti-B2M Antibody, mFc Tag. Test result was comparable to standard batch.
Expression System	HEK293
Theoretical Molecular Weight	50.3 kDa
Apparent Molecular Weight	Due to glycosylation, the protein migrates to 51-60 kDa based on Bis-Tris PAGE result.
Formulation	Lyophilized from 0.22 µm filtered solution in PBS (pH 7.4).
Reconstitution	Centrifuge the tube before opening. Reconstituting to a concentration more than 100 µg/ml is recommended. Dissolve the lyophilized protein in distilled water.
Storage & Stability	Upon receiving, the product remains stable up to 6 months at -20 °C or below. Upon reconstitution, the product should be stable for 3 months at -80 °C. Avoid repeated freeze-thaw cycles.

Examples

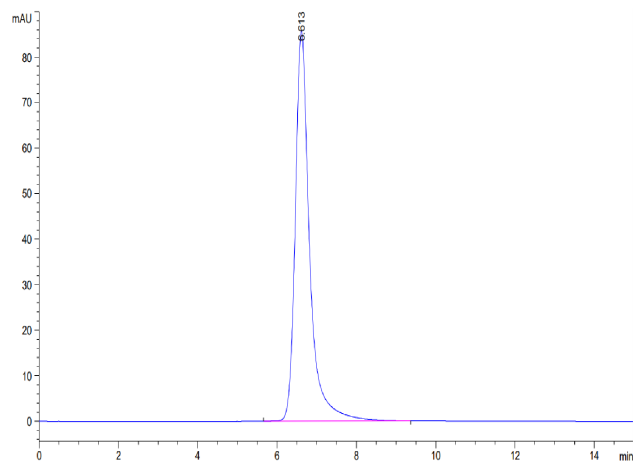


HLA-A*11:01&B2M&KRAS G12V (VVGAVGVGK)

Monomer[Biotin], His & Avi, Human on Bis-Tris PAGE under reduced condition. The purity is greater than 95%.



Immobilized HLA-A*11:01&B2M&KRAS G12V (VVGAVGVGK) Monomer[Biotin], His & Avi, Human, His Tag at 1 µg/ml (100 µl/Well) on streptavidin(5 µg/ml) precoated plate. Dose response curve for Anti-B2M Antibody, mFc Tag with the EC50 of 10.1 ng/ml determined by ELISA.



The purity of HLA-A*11:01&B2M&KRAS G12V (VVGAVGVGK) Monomer[Biotin], His & Avi, Human is greater than 95% as determined by SEC-HPLC.

Background

Target Background : Kirsten rat sarcoma 2 viral oncogene homolog (KRAS) is the most commonly mutated oncogene in human cancer. The developments of many cancers depend on sustained expression and signaling of KRAS, which makes KRAS a high-priority therapeutic target. The virtual screening approach to discover novel KRAS inhibitors and synthetic lethality interactors of KRAS are discussed in detail.

Synonyms : MHC; KRAS; K-Ras 2; KRAS2; C-K-RAS; CFC2; K-RAS2A; K-RAS2B; K-RAS4A; K-RAS4B; KRAS1; KRAS2; NS; NS3; RASK2; GTPase Kras; KI-RAS; RALD

For research use only. Not intended for human or animal clinical trials, therapeutic or diagnostic use.

Manufacturer: Nanjing GenScript Biotech Co., Ltd. No. 28Yongxi Road, Jiangning District, Nanjing, Jiangsu, China