

Rev03
 Update: Aug,08,2025
DATASHEET

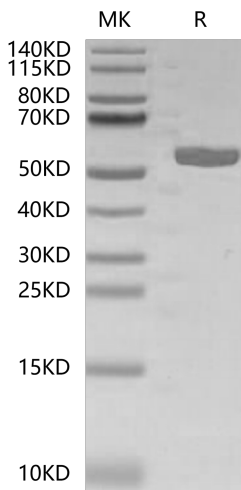
HLA-A*02:01&B2M&PRAME (ALYVDSLFFL) Monomer, His & Avi, Human

Cat. No.: Z06590

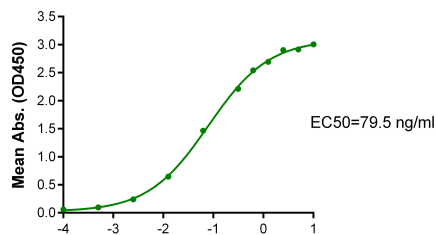
Product Introduction

Species	Human
Protein Construction	<div style="background-color: #0056b3; color: white; padding: 5px;"> HLA-A*02:01&B2M&PRAME (ALYVDSLFFL) Monomer[Gly25-Thr305(HLA-A*02:01), Ile21-Met119(B2M) and ALYVDSLFFL peptide] Accession # P79603(HLA-A*02:01)&P61769(B2M)&ALYVDSLFFL </div> <div style="display: flex; justify-content: space-between; align-items: center; margin-top: 5px;"> N-term <div style="display: flex; gap: 10px;"> <div style="background-color: #90c17e; padding: 2px 5px;">His</div> <div style="background-color: #4f7942; padding: 2px 5px;">Avi</div> </div> C-term </div>
Purity	> 95% as determined by BisTris PAGE > 95% as determined by HPLC
Endotoxin Level	Less than 1EU per µg by the LAL method.
Biological Activity	Measured by its binding ability in a functional ELISA. Immobilized HLA-A*02:01&B2M&PRAME (ALYVDSLFFL) Monomer, His & Avi, Human at 5µg/ml (100µl/well) on the plate can bind Anti-HLA-A*02:01&B2M&PRAME (ALYVDSLFFL) Antibody, hFc Tag. Test result was comparable to standard batch
Expression System	HEK293
Theoretical Molecular Weight	50.60 kDa
Apparent Molecular Weight	Due to glycosylation, the protein migrates to 53-63 kDa based on Bis-Tris PAGE result.
Formulation	Lyophilized from 0.22 µm filtered solution in PBS, 100mM Arginine (pH 7.4).
Reconstitution	Centrifuge the tube before opening. Reconstituting to a concentration more than 100 µg/ml is recommended. Dissolve the lyophilized protein in distilled water.
Storage & Stability	Upon receiving, the product remains stable up to 6 months at -20 °C or below. Upon reconstitution, the product should be stable for 3 months at -80 °C. Avoid repeated freeze-thaw cycles.

Examples

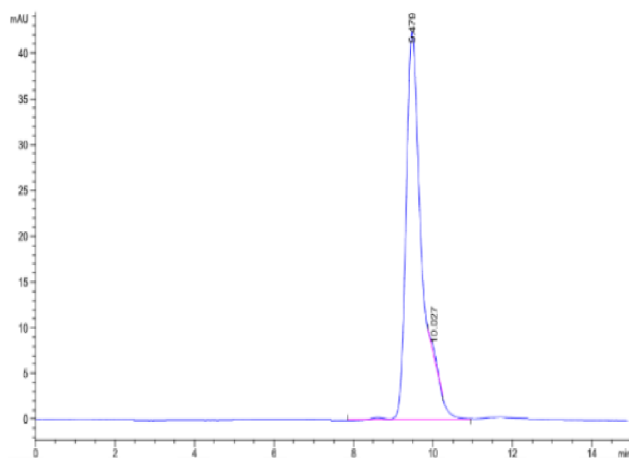


HLA-A*02:01&B2M&PRAME (ALYVDSLFFL) Monomer, His & Avi, Human on Bis-Tris PAGE under reduced condition. The purity is greater than 95%.



Log Anti-HLA-A*02:01&B2M&PRAME (ALYVDSLFFL) Antibody, hFc Tag Conc. ($\mu\text{g/ml}$)

Immobilized HLA-A*02:01&B2M&PRAME (ALYVDSLFFL) Monomer, His & Avi, Human, His Tag at 5 $\mu\text{g/ml}$ (100 $\mu\text{l/well}$) on the plate. Dose response curve for Anti-HLA-A*02:01&B2M&PRAME (ALYVDSLFFL) Antibody, hFc Tag with the EC50 of 79.5 ng/ml determined by ELISA.



The purity of HLA-A*02:01&B2M&PRAME (ALYVDSLFFL) Monomer, His & Avi, Human is greater than 95% as determined by SEC-HPLC.

Background

Target Background : PRAME (PReferentially expressed Antigen in MELanoma) is a melanoma-associated antigen expressed in cutaneous and ocular melanomas and some other malignant neoplasms, while its expression in normal tissue and benign tumors is limited.

Synonyms : PRAME; OIP-4; OIP4; MAPE

For research use only. Not intended for human or animal clinical trials, therapeutic or diagnostic use.

Manufacturer: Nanjing GenScript Biotech Co., Ltd. No. 28Yongxi Road, Jiangning District, Nanjing, Jiangsu, China

GenScript USA, Inc.

860 Centennial Ave. Piscataway, NJ 08854

Tel: 1-732-885-9188

