

Rev03  
 Update: Aug,08,2025
**DATASHEET**

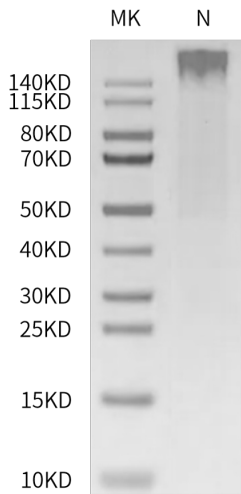
# HLA-A\*02:01&B2M&PRAME (ALYVDSLFFL) Tetramer, His & Avi, Human

Cat. No.: Z06591

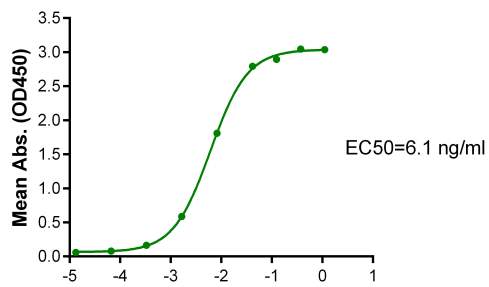
## Product Introduction

<b>Species</b>	Human
<b>Protein Construction</b>	<div style="background-color: #0056b3; color: white; padding: 5px;">           HLA-A*02:01&amp;B2M&amp;PRAME (ALYVDSLFFL) Tetramer[Gly25-Thr305 (HLA-A*02:01), Ile21-Met119 (B2M) and ALYVDSLFFL peptide]            Accession # P79603(HLA-A*02:01)&amp;P61769(B2M)&amp;ALYVDSLFFL         </div> <div style="display: flex; justify-content: space-between; align-items: center; margin-top: 5px;"> <span>N-term</span> <div style="background-color: #90c090; padding: 2px 5px;">His</div> <div style="background-color: #4f81bd; padding: 2px 5px;">Avi</div> <span>C-term</span> </div>
<b>Purity</b>	> 95% as determined by BisTris PAGE > 95% as determined by HPLC
<b>Endotoxin Level</b>	Less than 1EU per µg by the LAL method.
<b>Biological Activity</b>	Measured by its binding ability in a functional ELISA. Immobilized HLA-A*02:01&B2M&PRAME (ALYVDSLFFL) Tetramer, His & Avi, Human at 1µg/ml (100µl/well) on the plate can bind Anti-HLA-A*02:01&B2M&PRAME (ALYVDSLFFL) Antibody, hFc Tag. Test result was comparable to standard batch.
<b>Expression System</b>	HEK293
<b>Theoretical Molecular Weight</b>	258 kDa
<b>Apparent Molecular Weight</b>	Due to glycosylation, the protein migrates to 260-265 kDa under Non reducing (N) condition based on Bis-Tris PAGE result.
<b>Formulation</b>	Lyophilized from 0.22 µm filtered solution in PBS, 100mM L-arginine (pH 7.4).
<b>Reconstitution</b>	Centrifuge the tube before opening. Reconstituting to a concentration more than 100 µg/ml is recommended. Dissolve the lyophilized protein in distilled water.
<b>Storage &amp; Stability</b>	Upon receiving, the product remains stable up to 6 months at -20 °C or below. Upon reconstitution, the product should be stable for 3 months at -80 °C. Avoid repeated freeze-thaw cycles.

## Examples

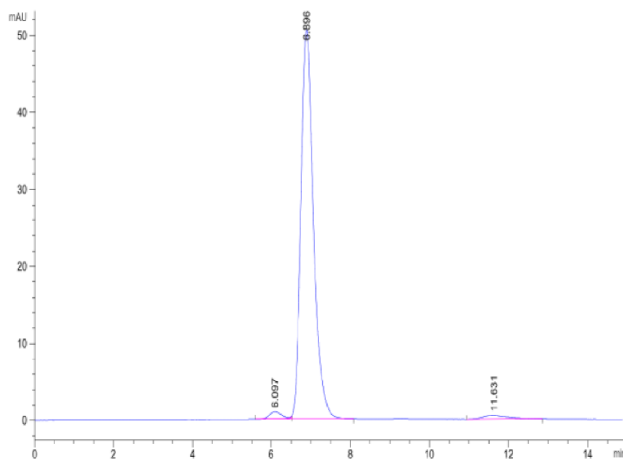


HLA-A\*02:01&B2M&PRAME (ALYVDSLFFL) Tetramer, His & Avi, Human on Bis-Tris PAGE under reduced condition. The purity is greater than 95%.



Log Anti-HLA-A\*02:01&B2M&PRAME Antibody, hFc Tag Conc. (µg/ml)

Immobilized HLA-A\*02:01&B2M&PRAME (ALYVDSLFFL) Tetramer, His & Avi, Human, His Tag at 1 µg/ml (100 µl/well) on the plate. Dose response curve for Anti-HLA-A\*02:01&B2M&PRAME Antibody, hFc Tag with the EC50 of 6.1 ng/ml determined by ELISA.



The purity of HLA-A\*02:01&B2M&PRAME (ALYVDSLFFL) Tetramer, His & Avi, Human is greater than 95% as determined by SEC-HPLC.

## Background

**Target Background :** PRAME (PReferentially expressed Antigen in MELanoma) is a melanoma-associated antigen expressed in cutaneous and ocular melanomas and some other malignant neoplasms, while its expression in normal tissue and benign tumors is limited.

**Synonyms :** PRAME; OIP-4; OIP4; MAPE

**For research use only. Not intended for human or animal clinical trials, therapeutic or diagnostic use.**

Confidential and Privileged



Manufacturer: Nanjing GenScript Biotech Co., Ltd. No. 28Yongxi Road, Jiangning District, Nanjing, Jiangsu, China

---

**GenScript USA, Inc.**

860 Centennial Ave. Piscataway, NJ 08854

Tel: 1-732-885-9188