

Rev03
 Update: Aug,08,2025

DATASHEET

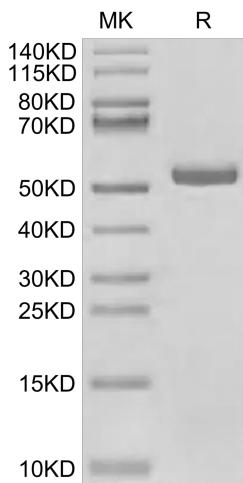
HLA-A*02:01&B2M&PRAME (SLLQHLIGL) Monomer, His & Avi, Human

Cat. No.: Z06592

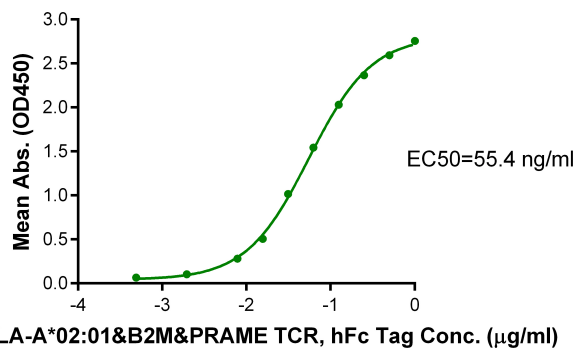
Product Introduction

Species	Human
Protein Construction	<div style="display: flex; align-items: center; justify-content: space-between;"> <div style="background-color: #0056b3; color: white; padding: 5px; text-align: center;"> HLA-A*02:01&B2M&PRAME (SLLQHLIGL) Monomer <small>[Gly25-Thr305(HLA-A*02:01), Ile21-Met119(B2M) and SLLQHLIGL peptide]</small> <small>Accession # A0A140T913(HLA-A*02:01)&P61769(B2M)&SLLQHLIGL</small> </div> <div style="background-color: #90c090; padding: 5px; text-align: center;">His</div> <div style="background-color: #508050; padding: 5px; text-align: center;">Avi</div> </div> <p style="text-align: center; margin-top: 5px;">N-term C-term</p>
Purity	> 95% as determined by BisTris PAGE > 95% as determined by HPLC
Endotoxin Level	Less than 1EU per µg by the LAL method.
Biological Activity	Measured by its binding ability in a functional ELISA. Immobilized HLA-A*02:01&B2M&PRAME (SLLQHLIGL) Monomer, His & Avi, Human at 2µg/ml (100µl/well) on the plate can bind HLA-A*02:01&B2M&PRAME TCR. Test result was comparable to standard batch.
Expression System	HEK293
Theoretical Molecular Weight	50.40 kDa
Apparent Molecular Weight	Due to glycosylation, the protein migrates to 51-58 kDa based on Bis-Tris PAGE result.
Formulation	Lyophilized from 0.22µm filtered solution in PBS (pH 7.4).
Reconstitution	Centrifuge the tube before opening. Reconstituting to a concentration more than 100 µg/ml is recommended. Dissolve the lyophilized protein in distilled water.
Storage & Stability	Upon receiving, the product remains stable up to 6 months at -20 °C or below. Upon reconstitution, the product should be stable for 3 months at -80 °C. Avoid repeated freeze-thaw cycles.

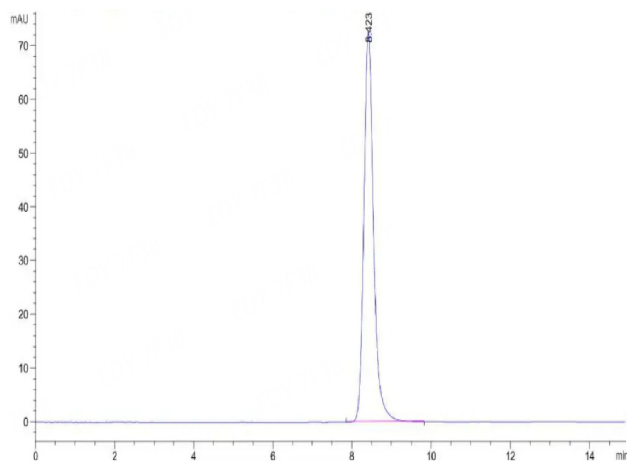
Examples



HLA-A*02:01&B2M&PRAME (SLLQHLIGL) Monomer, His & Avi, Human on Bis-Tris PAGE under reduced condition. The purity is greater than 95%.



Immobilized HLA-A*02:01&B2M&PRAME (SLLQHLIGL) Monomer, His & Avi, Human, His Tag at 2 µg/ml (100 µl/well) on the plate. Dose response curve for HLA-A*02:01&B2M&PRAME TCR, hFc Tag with the EC50 of 55.4 ng/ml determined by ELISA.



The purity of HLA-A*02:01&B2M&PRAME (SLLQHLIGL) Monomer, His & Avi, Human is greater than 95% as determined by SEC-HPLC.

Background

Target Background : PRAME (PReferentially expressed Antigen in MElanoma) is a melanoma-associated antigen expressed in cutaneous and ocular melanomas and some other malignant neoplasms, while its expression in normal tissue and benign tumors is limited.

Synonyms : PRAME; OIP-4; OIP4; MAPE

For research use only. Not intended for human or animal clinical trials, therapeutic or diagnostic use.

Confidential and Privileged



Manufacturer: Nanjing GenScript Biotech Co., Ltd. No. 28Yongxi Road, Jiangning District, Nanjing, Jiangsu, China

GenScript USA, Inc.

860 Centennial Ave. Piscataway, NJ 08854

Tel: 1-732-885-9188