

Rev03
 Update: Aug,08,2025
DATASHEET

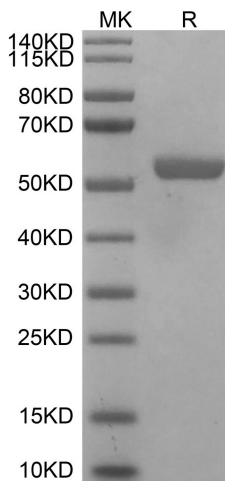
HLA-E*01:03&B2M&Peptide (VMAPRTLVL) Monomer, His & Avi, Human

Cat. No.: Z06645

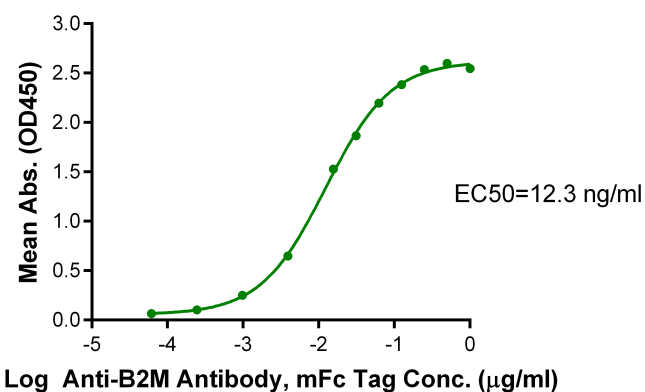
Product Introduction

Species	Human
Protein Construction	<div style="display: flex; align-items: center; justify-content: space-between;"> <div style="background-color: #0056b3; color: white; padding: 5px; text-align: center;"> HLA-E*01:03&B2M&Peptide (VMAPRTLVL) Monomer [Gly22-Thr302(HLA-E*01:03), Ile21-Met119(B2M) and VMAPRTLVL peptide] Accession # P13747(HLA-E*01:03)&P61769(B2M)&VMAPRTLVL </div> <div style="background-color: #90c080; padding: 5px; text-align: center;">His</div> <div style="background-color: #4f81bd; padding: 5px; text-align: center;">Avi</div> </div> <p style="text-align: center; margin-top: 5px;">N-term C-term</p>
Purity	> 95% as determined by BisTris PAGE > 95% as determined by HPLC
Endotoxin Level	Less than 1EU per µg by the LAL method.
Biological Activity	Measured by its binding ability in a functional ELISA. Immobilized HLA-E*01:03&B2M&Peptide (VMAPRTLVL) Monomer, His & Avi, Human at 1µg/ml(100µl/well) on the plate can bind AntiB2M Antibody, mFc Tag. Test result was comparable to standard batch.
Expression System	HEK293
Theoretical Molecular Weight	50.2 kDa
Apparent Molecular Weight	Due to glycosylation, the protein migrates to 52-60 kDa based on Bis-Tris PAGE result.
Formulation	Lyophilized from 0.22µm filtered solution in PBS (pH 7.4).
Reconstitution	Centrifuge the tube before opening. Reconstituting to a concentration more than 100 µg/ml is recommended. Dissolve the lyophilized protein in distilled water.
Storage & Stability	Upon receiving, the product remains stable up to 6 months at -20 °C or below. Upon reconstitution, the product should be stable for 3 months at -80 °C. Avoid repeated freeze-thaw cycles.

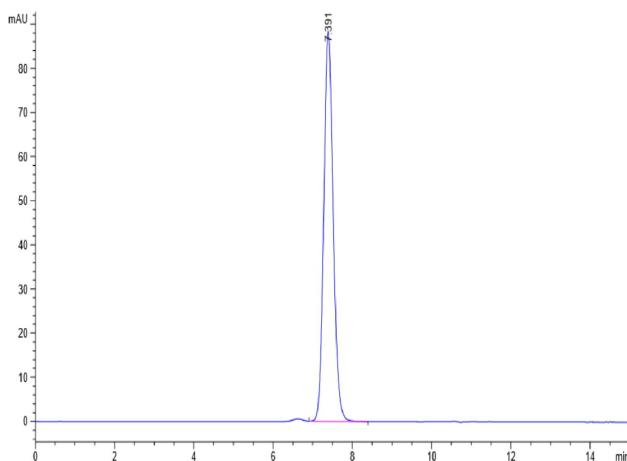
Examples



HLA-E*01:03&B2M&Peptide (VMAPRTLVL) Monomer, His & Avi, Human on Bis-Tris PAGE under reduced condition. The purity is greater than 95%.



Immobilized HLA-E*01:03&B2M&Peptide (VMAPRTLVL) Monomer, His & Avi, Human, His Tag at 1 µg/ml(100 µl/well) on the plate. Dose response curve for Anti-B2M Antibody, mFc Tag with the EC50 of 12.3 ng/ml determined by ELISA.



The purity of HLA-E*01:03&B2M&Peptide (VMAPRTLVL) Monomer, His & Avi, Human is greater than 95% as determined by SEC-HPLC.

Background

Target Background : HLA-E is a nonclassical member of the major histocompatibility complex class I gene locus. HLA-E protein shares a high level of homology with MHC Ia classical proteins: it has similar tertiary structure, associates with β 2-microglobulin, and is able to present peptides to cytotoxic lymphocytes. The main function of HLA-E under normal conditions is to present peptides derived from the leader sequences of classical HLA class I proteins, thus serving for monitoring of expression of these molecules performed by cytotoxic lymphocytes.

Synonyms : HLAE; sHLA-E; HLAE; MHC class I antigen E; MHC HLA-E alpha-1; MHC HLA-E alpha-2.1; MHC; QA1

For research use only. Not intended for human or animal clinical trials, therapeutic or diagnostic use.

Manufacturer: Nanjing GenScript Biotech Co., Ltd. No. 28Yongxi Road, Jiangning District, Nanjing, Jiangsu, China