

Rev03
 Update: Aug,08,2025

DATASHEET

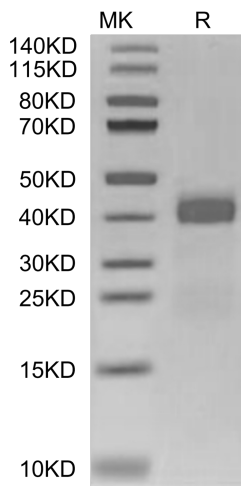
Galectin 3, His, Cynomolgus

Cat. No.: Z04796

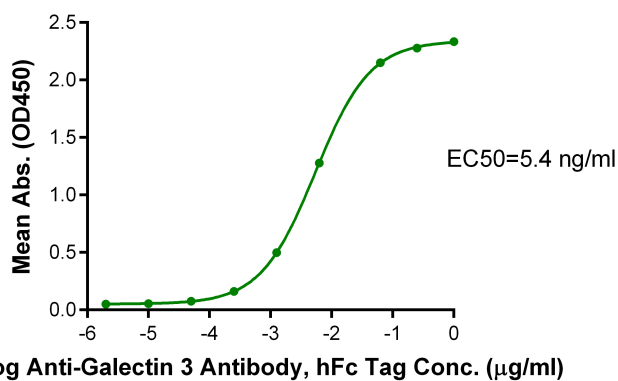
Product Introduction

Species	Cynomolgus				
Protein Construction	<table border="1"> <tr> <td>His</td> <td>Galectin 3 (Ala2-Ile248) Accession # XP_005561371.1</td> </tr> <tr> <td>N-term</td> <td>C-term</td> </tr> </table>	His	Galectin 3 (Ala2-Ile248) Accession # XP_005561371.1	N-term	C-term
His	Galectin 3 (Ala2-Ile248) Accession # XP_005561371.1				
N-term	C-term				
Purity	> 95% as determined by Bis-Tris PAGE				
Endotoxin Level	Less than 1EU per µg by the LAL method.				
Biological Activity	Measured by its binding ability in a functional ELISA. Immobilized Galectin 3, His, Cynomolgus at 2µg/ml (100µl/Well) on the plate can bind AntiGalectin 3 Antibody, hFc Tag. Test result was comparable to standard batch.				
Expression System	HEK293				
Theoretical Molecular Weight	27.05 kDa				
Apparent Molecular Weight	Due to glycosylation, the protein migrates to 38-48 kDa based on Bis-Tris PAGE result.				
Formulation	Lyophilized from 0.22 µm filtered solution in 50mM Hepes, 150mM NaCl, 200mM L-arginine, 2mM Tcep (pH 6.5).				
Reconstitution	Centrifuge the tube before opening. Reconstituting to a concentration more than 100 µg/ml is recommended. Dissolve the lyophilized protein in distilled water.				
Storage & Stability	Upon receiving, the product remains stable up to 6 months at -20 °C or below. Upon reconstitution, the product should be stable for 3 months at -80 °C. Avoid repeated freeze-thaw cycles.				

Examples



Galectin 3, His, Cynomolgus on Bis-Tris PAGE under reduced condition. The purity is greater than 95%.



Immobilized Galectin 3, His, Cynomolgus, His Tag at 2 µg/ml (100 µl/well) on the plate. Dose response curve for Anti-Galectin 3 Antibody, hFc Tag with the EC₅₀ of 5.4ng/ml determined by ELISA.

Background

Target Background : Galectin-3, also known as Mac-2, L29, CBP35, and epsilon BP, is classified as a chimeric member of the Galectin superfamily and contains one carbohydrate recognition domain (CRD) linked to a nonlectin domain. Galactose-specific lectin which binds IgE. May mediate with the alpha-3, beta-1 integrin the stimulation by CSPG4 of endothelial cells migration. Together with DMBT1, required for terminal differentiation of columnar epithelial cells during early embryogenesis (By similarity).

Synonyms : AGE-R3; CBP35; GAL3; Gal-3; galactin-3; GALBPCBP35; Galectin3; GALIG; L29; L31; Lectin L-29; LGALS2; LGALS3; Mac-2; MAC2GAL3

For research use only. Not intended for human or animal clinical trials, therapeutic or diagnostic use.

Manufacturer: Nanjing GenScript Biotech Co., Ltd. No. 28Yongxi Road, Jiangning District, Nanjing, Jiangsu, China