

Rev03
 Update: Aug,08,2025

DATASHEET

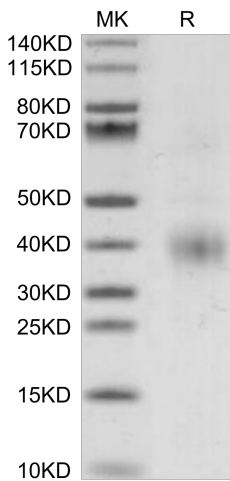
Clusterin, His, Human

Cat. No.: Z05182

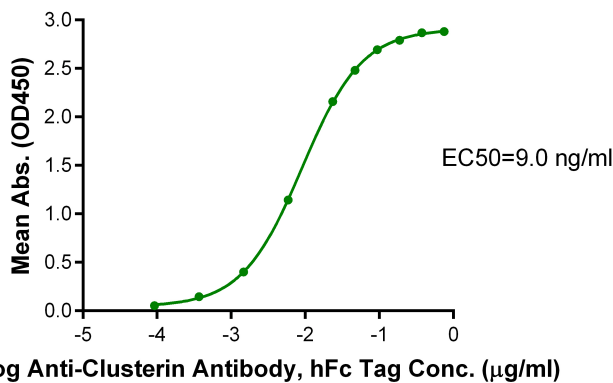
Product Introduction

Species	Human
Protein Construction	<div style="display: flex; align-items: center; justify-content: center;"> <div style="background-color: #0056b3; color: white; padding: 5px; text-align: center;"> Clusterin (Asp23-Glu449) Accession # P10909-1 </div> <div style="background-color: #76b82a; color: white; padding: 5px; text-align: center; margin-left: 10px;"> His </div> </div> <div style="display: flex; justify-content: space-around; margin-top: 5px; font-size: small;"> N-term C-term </div>
Purity	> 95% as determined by Bis-Tris PAGE
Endotoxin Level	Less than 1EU per µg by the LAL method.
Biological Activity	Measured by its binding ability in a functional ELISA. Immobilized Clusterin, His, Human at 1µg/ml (100µl/well) on the plate can bind AntiClusterin Antibody, hFc Tag. Test result was comparable to standard batch.
Expression System	HEK293
Theoretical Molecular Weight	51.2 kDa
Apparent Molecular Weight	The protein migrates to 38-41 kDa based on Bis-Tris PAGE result.
Formulation	Lyophilized from 0.22µm filtered solution in PBS (pH 7.4).
Reconstitution	Centrifuge the tube before opening. Reconstituting to a concentration more than 100 µg/ml is recommended. Dissolve the lyophilized protein in distilled water.
Storage & Stability	Upon receiving, the product remains stable up to 6 months at -20 °C or below. Upon reconstitution, the product should be stable for 3 months at -80 °C. Avoid repeated freeze-thaw cycles.

Examples



Clusterin, His, Human on Bis-Tris PAGE under reduced condition. The purity is greater than 95%.



Immobilized Clusterin, His, Human, His Tag at 1 µg/ml (100 µl/well) on the plate. Dose response curve for Anti-Clusterin Antibody, hFc Tag with the EC₅₀ of 9.0 ng/ml determined by ELISA.

Background

Target Background : Clusterin (CLU) is a stress-activated, ATP-independent molecular chaperone, normally secreted from cells, that is up-regulated in Alzheimer disease and in many cancers. It plays important roles in protein homeostasis/proteostasis, inhibition of cell death pathways, and modulation of pro-survival signalling and transcriptional networks. Changes in the CLU gene locus are highly associated with Alzheimer disease, and many therapy-resistant cancers over-express CLU.

Synonyms : Clusterin; Apo-J; Clustrin; SGP-2; Msqp-2; CLU; AAG4; APOJ; CLI; KUB1; SP-40; TRPM2; CLI; KUB1;

For research use only. Not intended for human or animal clinical trials, therapeutic or diagnostic use.

Manufacturer: Nanjing GenScript Biotech Co., Ltd. No. 28Yongxi Road, Jiangning District, Nanjing, Jiangsu, China