

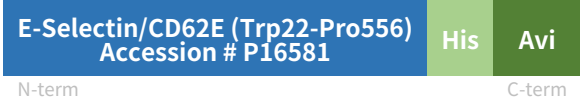
Rev03  
 Update: Aug,08,2025

**DATASHEET**

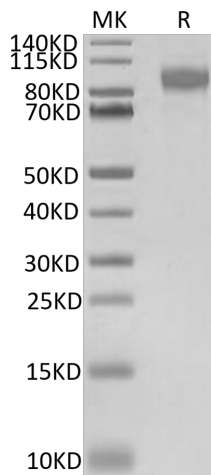
# E-Selectin/CD62E[Biotin], His & Avi, Human

Cat. No.: Z04448

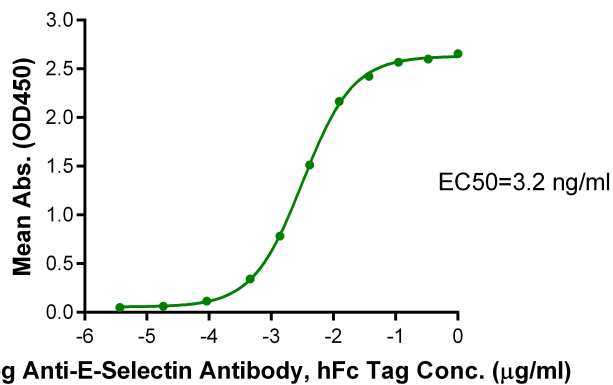
## Product Introduction

<b>Species</b>	Human
<b>Protein Construction</b>	 <p>E-Selectin/CD62E (Trp22-Pro556)        Accession # P16581</p> <p>N-term His Avi C-term</p>
<b>Conjugate</b>	Biotin
<b>Purity</b>	<p>&gt; 95% as determined by BisTris PAGE</p> <p>&gt; 95% as determined by HPLC</p>
<b>Endotoxin Level</b>	Less than 1EU per µg by the LAL method.
<b>Biological Activity</b>	Measured by its binding ability in a functional ELISA. Immobilized E-Selectin/CD62E[Biotin], His & Avi, Human at 1µg/ml (100µl/Well) on streptavidin (5µg/ml) precoated plate can bind AntiESelectin Antibody, hFc Tag. Test result was comparable to standard batch.
<b>Expression System</b>	HEK293
<b>Theoretical Molecular Weight</b>	61.6 kDa
<b>Apparent Molecular Weight</b>	Due to glycosylation, the protein migrates to 80-100 kDa based on Bis-Tris PAGE result.
<b>Formulation</b>	Lyophilized from 0.22µm filtered solution in PBS (pH 7.4).
<b>Reconstitution</b>	Centrifuge the tube before opening. Reconstituting to a concentration more than 100 µg/ml is recommended. Dissolve the lyophilized protein in distilled water.
<b>Storage &amp; Stability</b>	Upon receiving, the product remains stable up to 6 months at -20 °C or below. Upon reconstitution, the product should be stable for 3 months at -80 °C. Avoid repeated freeze-thaw cycles.

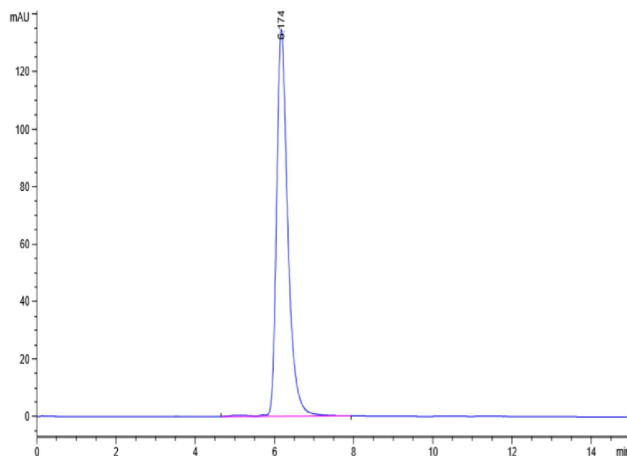
## Examples



E-Selectin/CD62E[Biotin], His & Avi, Human on Bis-Tris PAGE under reduced condition. The purity is greater than 95%.



Immobilized E-Selectin/CD62E[Biotin], His & Avi, Human, His Tag at 1 µg/ml (100 µl/Well) on streptavidin(5 µg/ml) precoated plate. Dose response curve for Anti-E-Selectin Antibody, hFc Tag with the EC50 of 3.2 ng/ml determined by ELISA.



The purity of E-Selectin/CD62E[Biotin], His & Avi, Human is greater than 95% as determined by SEC-HPLC.

## Background

**Target Background :** E-Selectin (Endothelial Leukocyte Adhesion Molecule-1, ELAM-1, CD62E), a member of the Selectin family, is a 107 - 115 kDa cell surface glycoprotein. It is transiently expressed on vascular endothelial cells in response to IL-1 beta and TNF-alpha. E-selectin mediates in the adhesion of blood neutrophils in cytokine-activated endothelium through interaction with SELPLG/PSGL1. May have a role in capillary morphogenesis.

**Synonyms :** CD62E; ELAM; ELAM1; ESEL; E-Selectin; LECAM2; SELE; selectin E; RP1-117P20.2

**For research use only. Not intended for human or animal clinical trials, therapeutic or diagnostic use.**

Manufacturer: Nanjing GenScript Biotech Co., Ltd. No. 28Yongxi Road, Jiangning District, Nanjing, Jiangsu, China