

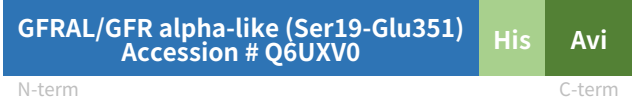
Rev03
 Update: Aug,08,2025

DATASHEET

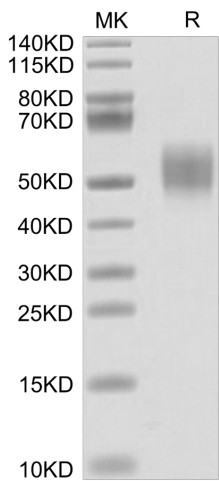
GFRAL/GFR alpha-like[Biotin], His & Avi, Human

Cat. No.: Z04471

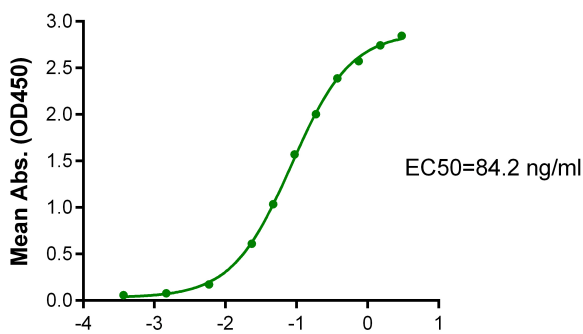
Product Introduction

Species	Human
Protein Construction	 <p style="text-align: center;">GFRAL/GFR alpha-like (Ser19-Glu351) Accession # Q6UXV0</p> <p style="text-align: center;">N-term His Avi C-term</p>
Conjugate	Biotin
Purity	> 95% as determined by BisTris PAGE > 95% as determined by HPLC
Endotoxin Level	Less than 1EU per µg by the LAL method.
Biological Activity	Measured by its binding ability in a functional ELISA. Immobilized Human GDF15, His Tag at 5µg/ml (100µl/well) on the plate can bind GFRAL/GFR alpha-like[Biotin], His & Avi, Human. Test result was comparable to standard batch.
Expression System	HEK293
Theoretical Molecular Weight	40.7 kDa
Apparent Molecular Weight	Due to glycosylation, the protein migrates to 48-62 kDa based on Bis-Tris PAGE result.
Formulation	Lyophilized from 0.22µm filtered solution in PBS (pH 7.4).
Reconstitution	Centrifuge the tube before opening. Reconstituting to a concentration more than 100 µg/ml is recommended. Dissolve the lyophilized protein in distilled water.
Storage & Stability	Upon receiving, the product remains stable up to 6 months at -20 °C or below. Upon reconstitution, the product should be stable for 3 months at -80 °C. Avoid repeated freeze-thaw cycles.

Examples

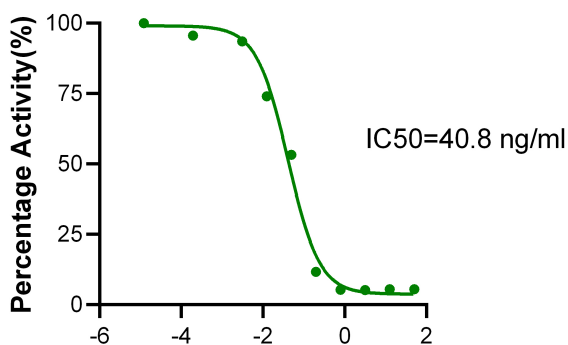


GFRAL/GFR alpha-like[Biotin], His & Avi, Human on Bis-Tris PAGE under reduced conditions. The purity is greater than 95%.



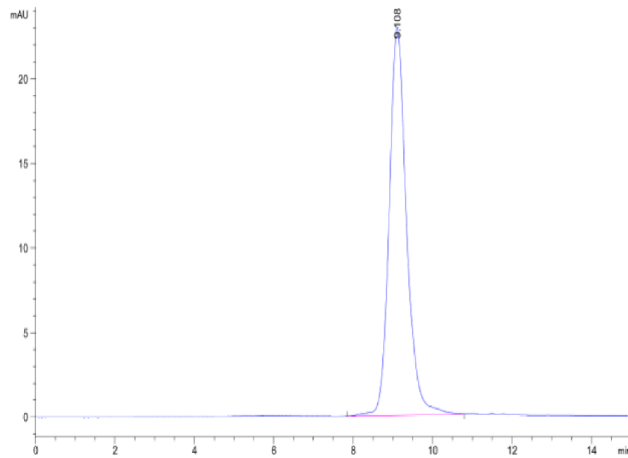
Immobilized Human GDF15, hFc Tag at 5 µg/ml (100 µl/well) on the plate. Dose response curve for GFRAL/GFR alpha-like[Biotin], His & Avi, Human, His-Avi Tag with the EC₅₀ of 84.2 ng/ml determined by ELISA.

Log Biotinylated Human GFRAL, His-Avi Tag Conc. (µg/ml)



Serial dilutions of Anti-GDF15 Antibody were added into Human GDF15, His Tag : GFRAL/GFR alpha-like[Biotin], His & Avi, Human, His Tag binding reactions. The half maximal inhibitory concentration(IC₅₀) is 40.8 ng/ml.

Log Anti-GDF15 Antibody, hFc Tag Conc. (µg/ml)



The purity of GFRAL/GFR alpha-like[Biotin], His & Avi, Human is greater than 95% as determined by SEC-HPLC.

Background

Target Background : GFR alpha-like (GDNF receptor-alpha-like) is a distant member of the GDNFR family of proteins. Mature human GFR alpha-like is a 376 amino acid (aa) type I transmembrane protein. It contains a 333 aa extracellular domain, a 20 aa transmembrane domain and a 23 aa cytoplasmic domain. GFRAL is a brainstem-restricted receptor for GDF15 which regulates food intake, energy expenditure and body weight in response to metabolic and toxin-induced stresses.

Synonyms : GFR alpha-like; GFRAL; GRAL; C6orf144

For research use only. Not intended for human or animal clinical trials, therapeutic or diagnostic use.

Manufacturer: Nanjing GenScript Biotech Co., Ltd. No. 28 Yongxi Road, Jiangning District, Nanjing, Jiangsu, China