

Rev03  
 Update: Aug,08,2025

**DATASHEET**

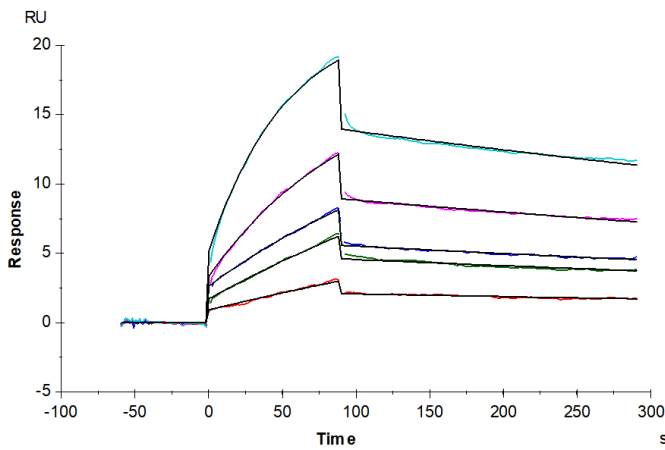
# IL-1 Beta/IL-1F2, His, Cynomolgus

Cat. No.: Z04819

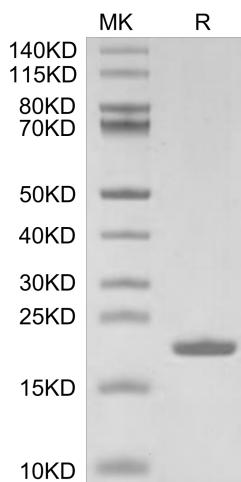
## Product Introduction

<b>Species</b>	Cynomolgus
<b>Protein Construction</b>	<div style="display: flex; align-items: center; justify-content: center;"> <div style="background-color: #0056b3; color: white; padding: 5px; text-align: center; margin-right: 10px;">             IL-1 Beta/IL-1F2 (Ala117-Ser268)              Accession # A0A2K5VDC7           </div> <div style="background-color: #76b82a; color: white; padding: 5px; text-align: center; margin-left: 10px;">             His           </div> </div> <div style="display: flex; justify-content: space-around; margin-top: 5px; font-size: small;"> <span>N-term</span> <span>C-term</span> </div>
<b>Purity</b>	> 95% as determined by BisTris PAGE > 95% as determined by HPLC
<b>Endotoxin Level</b>	Less than 1EU per µg by the LAL method.
<b>Biological Activity</b>	Human IL1 RII, hFc Tag captured on CM5 Chip via Protein A can bind IL-1 Beta/IL-1F2, His, Cynomolgus in SPR assay (Biacore T200). Test result was comparable to standard batch.
<b>Expression System</b>	E.coli
<b>Theoretical Molecular Weight</b>	18.33 kDa
<b>Apparent Molecular Weight</b>	The protein has a predicted MW of 18.33 kDa same as Bis-Tris PAGE result.
<b>Formulation</b>	Lyophilized from 0.22µm filtered solution in PBS,100mM L-arginine (pH 7.4).
<b>Reconstitution</b>	Centrifuge the tube before opening. Reconstituting to a concentration more than 100 µg/ml is recommended. Dissolve the lyophilized protein in distilled water.
<b>Storage &amp; Stability</b>	Upon receiving, the product remains stable up to 6 months at -20 °C or below. Upon reconstitution, the product should be stable for 3 months at -80 °C. Avoid repeated freeze-thaw cycles.

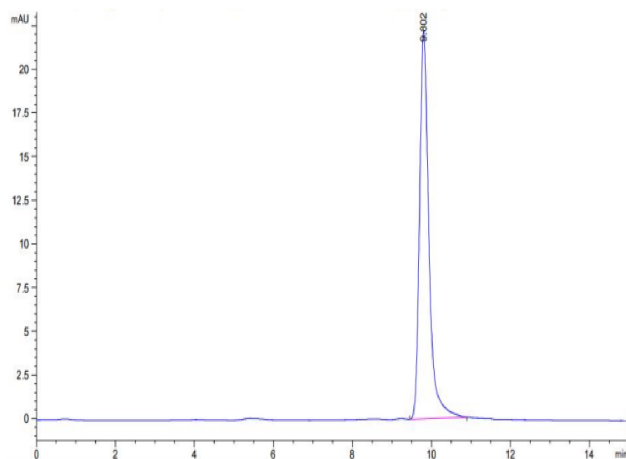
## Examples



Human IL-1 RII, hFc Tag captured on CM5 Chip via Protein A can bind IL-1 Beta/IL-1F2, His, Cynomolgus, His Tag with an affinity constant of 1.40 nM as determined in SPR assay (Biacore T200).



IL-1 Beta/IL-1F2, His, Cynomolgus on Bis-Tris PAGE under reduced condition. The purity is greater than 95%.



The purity of IL-1 Beta/IL-1F2, His, Cynomolgus is greater than 95% as determined by SEC-HPLC.

## Background

**Target Background :** Interleukin-1 beta (IL-1 $\beta$ ) is induced by inflammatory signals in a broad number of immune cell types. IL-1 $\beta$  (and IL-18) are the only cytokines which are processed by caspase-1 after inflammasome-mediated activation. IL-1 signaling activates innate immune cells including antigen presenting cells, and drives polarization of CD4 T cells towards T helper type (Th) 1 and Th17 cells.

**Synonyms :** Interleukin-1 beta; IL-1 beta; IL1F2; IL1B; IL-1BETA; IL1F2; IL-1 $\beta$ ; IL-1 beta; IL-1B ;Interleukin-1  $\beta$ ; IL-1  $\beta$ ; IL-1 $\beta$ ; IL-1  $\beta$

**For research use only. Not intended for human or animal clinical trials, therapeutic or diagnostic use.**

Manufacturer: Nanjing GenScript Biotech Co., Ltd. No. 28Yongxi Road, Jiangning District, Nanjing, Jiangsu, China