

Rev03
 Update: Aug,08,2025
DATASHEET

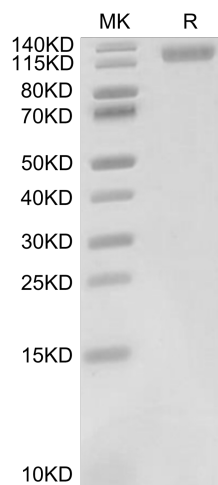
LDLR, His, Cynomolgus

Cat. No.: Z04854

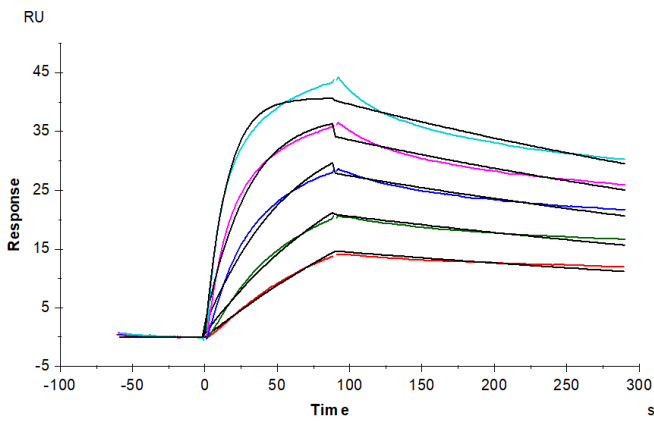
Product Introduction

| | |
|-------------------------------------|----------------------------------------------------------------------------------------------------------------------------------------------------------------------------------------------------------------------------------------------------------------------------------------------------------------------------------------------------------------------------------------------------------------------------------------------------------------------------------------------------------------------------------------------------------|
| Species | Cynomolgus |
| Protein Construction | <div style="display: flex; align-items: center; justify-content: center;"> <div style="background-color: #0056b3; color: white; padding: 5px; text-align: center;"> LDLR (Ala22-Gly788) Accession # XP_005588053.1 </div> <div style="background-color: #76923c; color: white; padding: 5px; text-align: center; margin-left: 10px;"> His </div> </div> <div style="display: flex; justify-content: space-around; margin-top: 5px; font-size: small;"> N-term C-term </div> |
| Purity | > 95% as determined by BisTris PAGE > 95% as determined by HPLC |
| Endotoxin Level | Less than 1EU per µg by the LAL method. |
| Expression System | HEK293 |
| Theoretical Molecular Weight | 86 kDa |
| Apparent Molecular Weight | Due to glycosylation, the protein migrates to 115-130 kDa based on Bis-Tris PAGE result. |
| Formulation | Lyophilized from 0.22µm filtered solution in PBS (pH 7.4). |
| Reconstitution | Centrifuge the tube before opening. Reconstituting to a concentration more than 100 µg/ml is recommended. Dissolve the lyophilized protein in distilled water. |
| Storage & Stability | Upon receiving, the product remains stable up to 6 months at -20 °C or below. Upon reconstitution, the product should be stable for 3 months at -80 °C. Avoid repeated freeze-thaw cycles. |

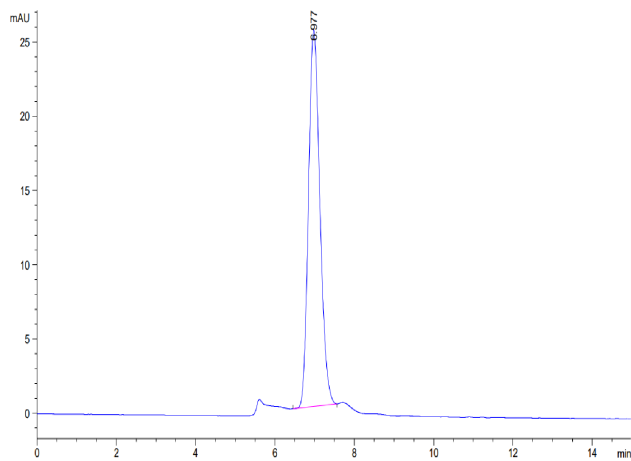
Examples



LDLR, His, Cynomolgus on Bis-Tris PAGE under reduced condition. The purity is greater than 95%.



LDLR, His, Cynomolgus, His Tag immobilized on CM5 Chip can bind Cynomolgus PCSK9, His Tag with an affinity constant of 0.27 nM as determined in SPR assay (Biacore T200).



The purity of LDLR, His, Cynomolgus is greater than 95% as determined by SEC-HPLC.

Background

Target Background : The low density lipoprotein receptor (LDLR) is the founding member of the LDL R family of widely expressed cell surface scavenger receptors. It is a cell-surface receptor that recognizes the apoprotein B100 which is embedded in the phospholipid outer layer of LDL particles

Synonyms : LDLR; FHC; LDL R; LDL receptor; LDLCQ2; FH

For research use only. Not intended for human or animal clinical trials, therapeutic or diagnostic use.

Manufacturer: Nanjing GenScript Biotech Co., Ltd. No. 28Yongxi Road, Jiangning District, Nanjing, Jiangsu, China