

Rev03
 Update: Aug,08,2025

DATASHEET

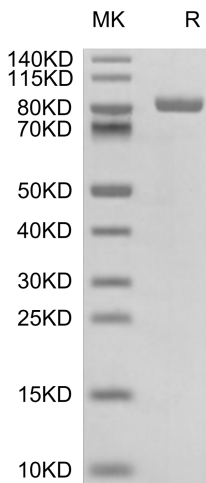
LILRB2/CD85d/ILT4 hFc Chimera, Cynomolgus

Cat. No.: Z04858

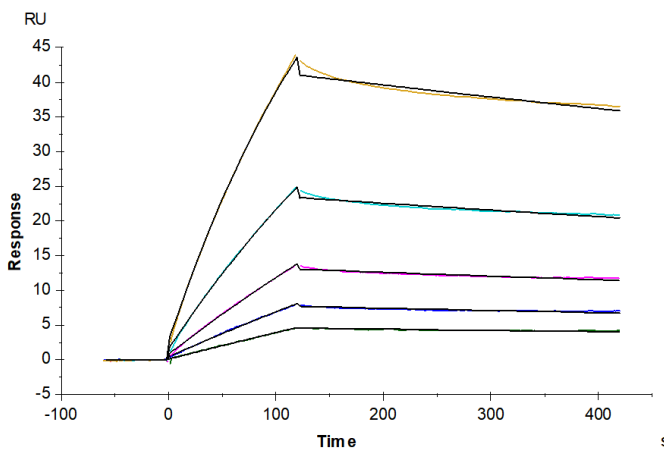
Product Introduction

Species	Cynomolgus
Protein Construction	<div style="display: flex; align-items: center; justify-content: center;"> <div style="background-color: #0056b3; color: white; padding: 5px; margin-right: 10px;"> LILRB2/CD85d/ILT4 (Gly24-Arg457) Accession # XP_015297203.1 </div> <div style="background-color: #76b82a; color: white; padding: 5px; margin-left: 10px;">hFc</div> </div> <div style="display: flex; justify-content: space-around; margin-top: 5px; font-size: small;"> N-term C-term </div>
Purity	> 95% as determined by Bis-Tris PAGE
Endotoxin Level	Less than 1EU per µg by the LAL method.
Biological Activity	LILRB2/CD85d/ILT4 hFc Chimera, Cynomolgus captured on CM5 Chip via Protein A can bind Cynomolgus HLAG&B2M&Peptide (RIIPRHLQL) Tetramer, His Tag in SPR assay (Biacore T200). Test result was comparable to standard batch.
Expression System	HEK293
Theoretical Molecular Weight	71.68 kDa
Apparent Molecular Weight	Due to glycosylation, the protein migrates to 80-90 kDa based on Bis-Tris PAGE result.
Formulation	Lyophilized from 0.22µm filtered solution in PBS (pH 7.4).
Reconstitution	Centrifuge the tube before opening. Reconstituting to a concentration more than 100 µg/ml is recommended. Dissolve the lyophilized protein in distilled water.
Storage & Stability	Upon receiving, the product remains stable up to 6 months at -20 °C or below. Upon reconstitution, the product should be stable for 3 months at -80 °C. Avoid repeated freeze-thaw cycles.

Examples



LILRB2/CD85d/ILT4 hFc Chimera, Cynomolgus on Bis-Tris PAGE under reduced condition. The purity is greater than 95%.



LILRB2/CD85d/ILT4 hFc Chimera, Cynomolgus, hFc Tag captured on CM5 Chip via Protein A can bind Cynomolgus HLA-G&B2M&Peptide (RIIPRHLQL) Tetramer, His Tag with an affinity constant of 42.50 nM as determined in SPR assay (Biacore T200).

Background

Target Background : The immunoglobulin-like transcript (ILT) comprise a family of activating and inhibitory type immunoreceptors whose genes are located in the same locus that encodes killer cell Ig-like receptors (KIR). ILT4, also known as LIR-2 and LILRB2, is a type I transmembrane protein expressed primarily on monocytes and dendritic cells (DC). LILRB2 is a receptor for class I MHC antigens. Recognizes a broad spectrum of HLA-A, HLA-B, HLA-C, HLA-G and HLA-F alleles.

Synonyms : CD85d; ILT4; ILT-4; ILT4CD85d; LILRB2; LIR2; MIR10

For research use only. Not intended for human or animal clinical trials, therapeutic or diagnostic use.

Manufacturer: Nanjing GenScript Biotech Co., Ltd. No. 28Yongxi Road, Jiangning District, Nanjing, Jiangsu, China