

Rev03  
 Update: Aug,08,2025

**DATASHEET**

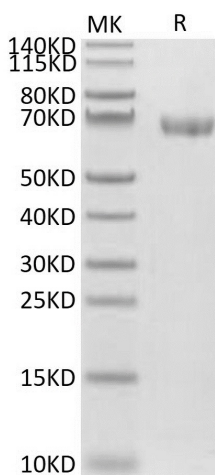
# LILRB2/CD85d/ILT4, His, Cynomolgus

Cat. No.: Z04859

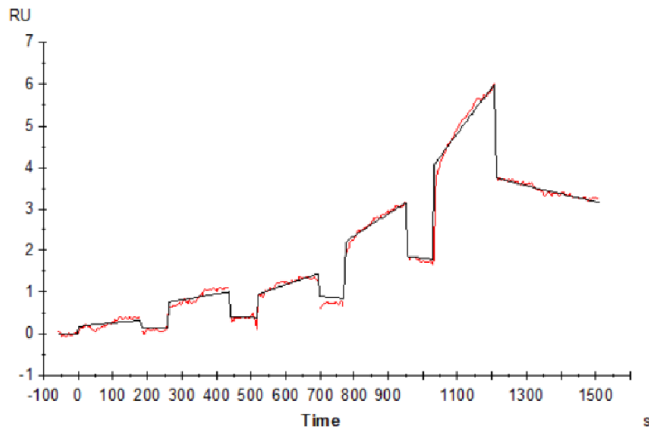
## Product Introduction

<b>Species</b>	Cynomolgus
<b>Protein Construction</b>	<div style="display: flex; align-items: center; justify-content: center;"> <div style="background-color: #0056b3; color: white; padding: 5px; text-align: center;"> <b>LILRB2/CD85d/ILT4 (Gly24-Arg457)</b>            Accession # XP_015297203.1         </div> <div style="background-color: #66c266; color: white; padding: 5px; text-align: center; margin-left: 10px;"> <b>His</b> </div> </div> <div style="display: flex; justify-content: space-around; margin-top: 5px;"> <span>N-term</span> <span>C-term</span> </div>
<b>Purity</b>	> 95% as determined by BisTris PAGE > 95% as determined by HPLC
<b>Endotoxin Level</b>	Less than 1EU per µg by the LAL method.
<b>Expression System</b>	HEK293
<b>Theoretical Molecular Weight</b>	48.2 kDa
<b>Apparent Molecular Weight</b>	Due to glycosylation, the protein migrates to 60-70 kDa based on Bis-Tris PAGE result.
<b>Formulation</b>	Lyophilized from 0.22µm filtered solution in PBS (pH 7.4).
<b>Reconstitution</b>	Centrifuge the tube before opening. Reconstituting to a concentration more than 100 µg/ml is recommended. Dissolve the lyophilized protein in distilled water.
<b>Storage &amp; Stability</b>	Upon receiving, the product remains stable up to 6 months at -20 °C or below. Upon reconstitution, the product should be stable for 3 months at -80 °C. Avoid repeated freeze-thaw cycles.

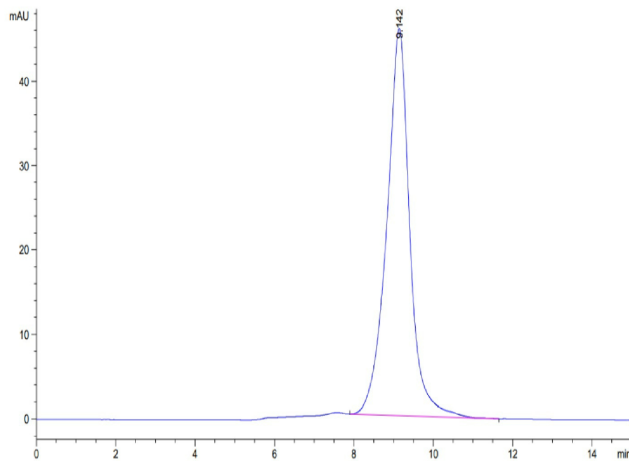
## Examples



LILRB2/CD85d/ILT4, His, Cynomolgus on Bis-Tris PAGE under reduced condition. The purity is greater than 95%.



LILRB2/CD85d/ILT4, His, Cynomolgus, His Tag immobilized on CM5 Chip can bind Cynomolgus HLA-G Complex Tetramer, His Tag with an affinity constant of 852 nM as determined in SPR assay (Biacore T200).



The purity of LILRB2/CD85d/ILT4, His, Cynomolgus is greater than 95% as determined by SEC-HPLC.

## Background

**Target Background :** The immunoglobulin-like transcript (ILT) comprise a family of activating and inhibitory type immunoreceptors whose genes are located in the same locus that encodes killer cell Ig-like receptors (KIR). ILT4, also known as LIR-2 and LILRB2, is a type I transmembrane protein expressed primarily on monocytes and dendritic cells (DC). LILRB2 is a receptor for class I MHC antigens. Recognizes a broad spectrum of HLA-A, HLA-B, HLA-C, HLA-G and HLA-F alleles.

**Synonyms :** CD85d; ILT4; ILT-4; ILT4CD85d; LILRB2; LIR2; MIR10

**For research use only. Not intended for human or animal clinical trials, therapeutic or diagnostic use.**

Manufacturer: Nanjing GenScript Biotech Co., Ltd. No. 28Yongxi Road, Jiangning District, Nanjing, Jiangsu, China