

Rev03
 Update: Aug,08,2025

DATASHEET

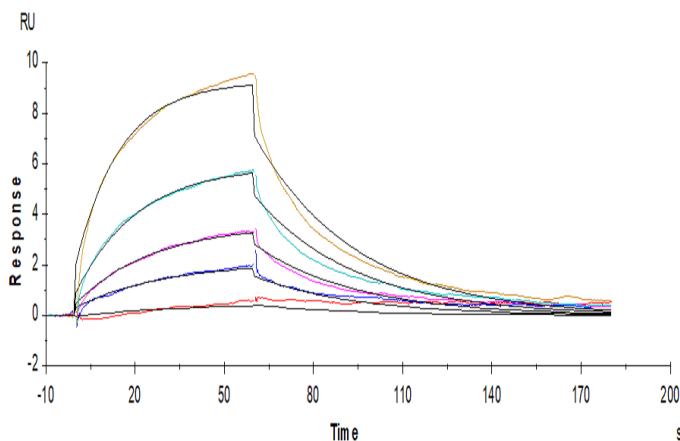
IL-12 R beta 1/CD212, His, Human

Cat. No.: Z05431

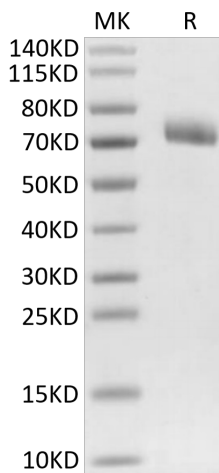
Product Introduction

Species	Human
Protein Construction	<div style="display: flex; align-items: center; justify-content: center;"> <div style="background-color: #0056b3; color: white; padding: 5px; text-align: center;"> IL-12 R beta 1/CD212 (Cys24-Glu540) Accession # P42701-1 </div> <div style="background-color: #76923c; color: white; padding: 5px; text-align: center; margin-left: 10px;"> His </div> </div> <div style="display: flex; justify-content: space-around; margin-top: 5px;"> N-term C-term </div>
Purity	> 95% as determined by BisTris PAGE > 95% as determined by HPLC
Endotoxin Level	Less than 1EU per µg by the LAL method.
Expression System	HEK293
Theoretical Molecular Weight	58.2 kDa
Apparent Molecular Weight	Due to glycosylation, the protein migrates to 70-80 kDa based on Bis-Tris PAGE result.
Formulation	Lyophilized from 0.22µm filtered solution in PBS (pH 7.4).
Reconstitution	Centrifuge the tube before opening. Reconstituting to a concentration more than 100 µg/ml is recommended. Dissolve the lyophilized protein in distilled water.
Storage & Stability	Upon receiving, the product remains stable up to 6 months at -20 °C or below. Upon reconstitution, the product should be stable for 3 months at -80 °C. Avoid repeated freeze-thaw cycles.

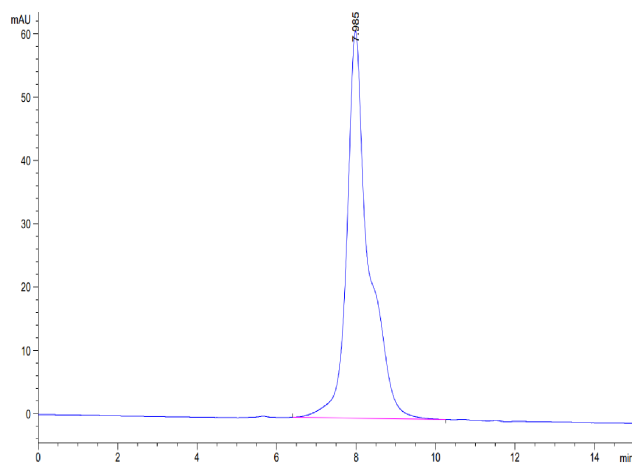
Examples



Human IL-12B, His Tag immobilized on CM5 Chip can bind IL-12 R beta 1/CD212, His, Human, His Tag with an affinity constant of 98.1nM as determined in a SPR assay (Biacore T200).



IL-12 R beta 1/CD212, His, Human on Bis-Tris PAGE under reduced condition. The purity is greater than 95%.



The purity of IL-12 R beta 1/CD212, His, Human is greater than 95% as determined by SEC-HPLC.

Background

Target Background : Human IL12RB1 is an autosomal gene that is essential for mycobacterial disease resistance and T cell differentiation. Lung and T cell IL12RB1 expression is allele-biased, and the extent to which cells express one IL12RB1 allele is unaffected by activation. Furthermore following its expression the IL12RB1 pre-mRNA is processed into either IL12RB1 Isoform 1 (IL12R β 1, a positive regulator of IL12 responsiveness) or IL12RB1 Isoform 2 (a protein of heretofore unknown function).

Synonyms : IL-12R-beta-1; IL-12RB1; IL12R; IL12RB; CD212; IL-12R subunit beta-1; IL-12R-BETA1; MGC34454; IL-12R- β -1; IL-12R subunit β -1; IL-12R- β 1

For research use only. Not intended for human or animal clinical trials, therapeutic or diagnostic use.

Manufacturer: Nanjing GenScript Biotech Co., Ltd. No. 28Yongxi Road, Jiangning District, Nanjing, Jiangsu, China