

Rev03  
 Update: Aug,08,2025

**DATASHEET**

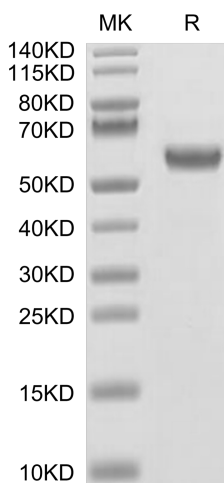
# SPP1/OPN, His, Human

Cat. No.: Z05855

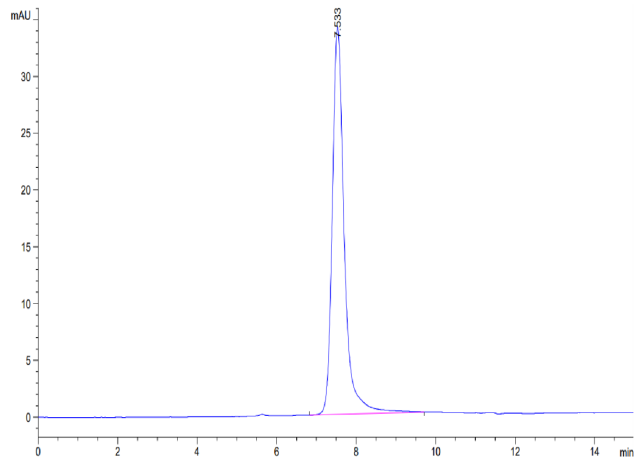
## Product Introduction

<b>Species</b>	Human
<b>Protein Construction</b>	<div style="display: flex; align-items: center; justify-content: center;"> <div style="background-color: #0056b3; color: white; padding: 5px; text-align: center; margin-right: 10px;"> <b>SPP1/OPN (Ile17-Asn300)_x000D_</b>  <b>Accession # NP_000573.1</b> </div> <div style="background-color: #76923c; color: white; padding: 5px; text-align: center; margin-left: 10px;"> <b>His</b> </div> </div> <div style="display: flex; justify-content: space-around; margin-top: 5px; font-size: small;"> <span>N-term</span> <span>C-term</span> </div>
<b>Purity</b>	> 95% as determined by BisTris PAGE > 95% as determined by HPLC
<b>Endotoxin Level</b>	Less than 1EU per µg by the LAL method.
<b>Expression System</b>	HEK293
<b>Theoretical Molecular Weight</b>	34.8 kDa
<b>Apparent Molecular Weight</b>	Due to glycosylation, the protein migrates to 50-60 kDa based on Bis-Tris PAGE result.
<b>Formulation</b>	Lyophilized from 0.22µm filtered solution in PBS (pH 7.4).
<b>Reconstitution</b>	Centrifuge the tube before opening. Reconstituting to a concentration more than 100 µg/ml is recommended. Dissolve the lyophilized protein in distilled water.
<b>Storage &amp; Stability</b>	Upon receiving, the product remains stable up to 6 months at -20 °C or below. Upon reconstitution, the product should be stable for 3 months at -80 °C. Avoid repeated freeze-thaw cycles.

## Examples



SPP1/OPN, His, Human on Bis-Tris PAGE under reduced condition. The purity is greater than 95%.



The purity of SPP1/OPN, His, Human is greater than 95% as determined by SEC-HPLC.

## Background

**Target Background :** Ovarian cancer is one of the most lethal malignant tumors in women. Secreted phosphoprotein 1 (SPP1) plays an important role in some cancer types. The expression of SPP1 was higher in epithelial ovarian cancer tissues than in normal ovarian tissues. Silencing SPP1 decreased the cell proliferation, migration, and invasion. Ectopic expression of SPP1 increased the cell proliferation, migration, and invasion. Silencing SPP1 prevented ovarian cancer growth in mice. Silencing SPP1 inhibited Integrin  $\beta$ 1/FAK/AKT pathway.

**Synonyms :** Osteopontin; Bone sialoprotein 1; Nephropontin; SPP-1; BNSP; OPN; SPP1; Uropontin; BSP-1; ETA-1; BSPI

**For research use only. Not intended for human or animal clinical trials, therapeutic or diagnostic use.**

Manufacturer: Nanjing GenScript Biotech Co., Ltd. No. 28Yongxi Road, Jiangning District, Nanjing, Jiangsu, China