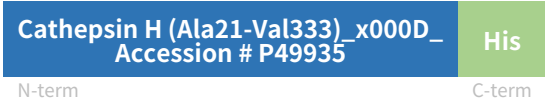


Rev03
Update: Aug,08,2025**DATASHEET**

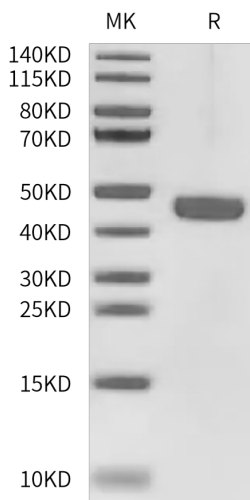
Cathepsin H, His, Mouse

Cat. No.: Z06045

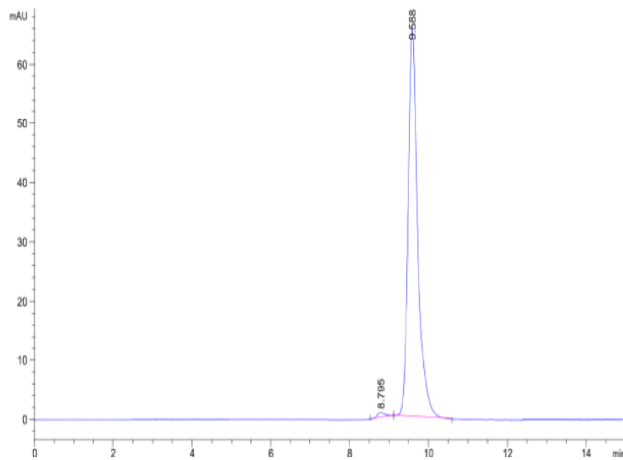
Product Introduction

Species	Mouse
Protein Construction	
Purity	> 95% as determined by BisTris PAGE > 95% as determined by HPLC
Endotoxin Level	Less than 1EU per µg by the LAL method.
Biological Activity	Measured by its ability to cleave the fluorogenic peptide substrate, Arg7amido4 - methylcoumarin (RAMC). The specific activity is >700 pmol/min/µg. Test result meets the standard.
Expression System	HEK293
Theoretical Molecular Weight	36.23 kDa
Apparent Molecular Weight	Due to glycosylation, the protein migrates to 40-50 kDa based on Bis-Tris PAGE result.
Formulation	Lyophilized from 0.22 µm filtered solution in PBS (pH 7.4).
Reconstitution	Centrifuge the tube before opening. Reconstituting to a concentration more than 100 µg/ml is recommended. Dissolve the lyophilized protein in distilled water.
Storage & Stability	Upon receiving, the product remains stable up to 6 months at -20 °C or below. Upon reconstitution, the product should be stable for 3 months at -80 °C. Avoid repeated freeze-thaw cycles.

Examples



Cathepsin H, His, Mouse on Bis-Tris PAGE under reduced condition. The purity is greater than 95%.



The purity of Cathepsin H, His, Mouse is greater than 95% as determined by SEC-HPLC.

Background

Target Background : Cathepsin H (CatH) is a lysosomal cysteine protease with a unique aminopeptidase activity that is extensively expressed in the lung, pancreas, thymus, kidney, liver, skin, and brain. Owing to its specific enzymatic activity, CatH has critical effects on the regulation of biological behaviours of cancer cells and pathological processes in brain diseases.

Synonyms : Cathepsin B3; Cathepsin BA; Ctsh

For research use only. Not intended for human or animal clinical trials, therapeutic or diagnostic use.

Manufacturer: Nanjing GenScript Biotech Co., Ltd. No. 28Yongxi Road, Jiangning District, Nanjing, Jiangsu, China