

Rev03  
 Update: Aug,08,2025

**DATASHEET**

# CDCP1, His, Rhesus macaque

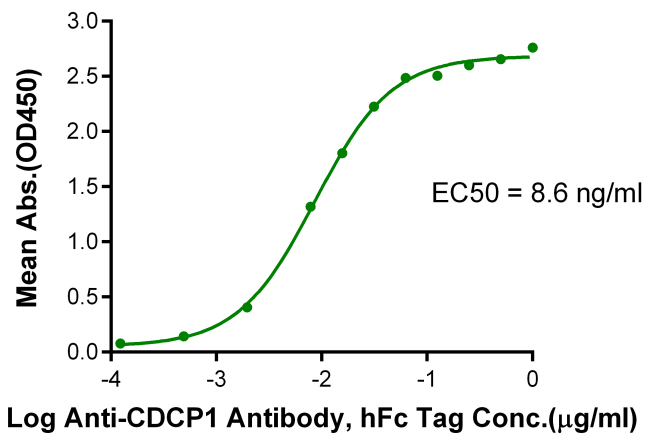
Cat. No.: Z06434

## Product Introduction

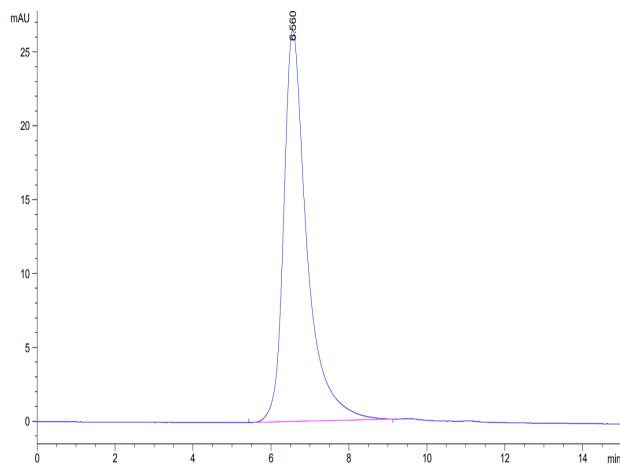
<b>Species</b>	Rhesus macaque
<b>Protein Construction</b>	<div style="display: flex; align-items: center; gap: 10px;"> <div style="background-color: #0056b3; color: white; padding: 5px; font-size: 0.8em;">           CDCP1 (Ala29-Thr667)_x000D_ Accession # XP_001114659.2         </div> <div style="background-color: #76923c; color: white; padding: 5px; font-size: 0.8em;">His</div> </div> <div style="display: flex; justify-content: space-between; font-size: 0.7em; margin-top: 2px;"> <span>N-term</span> <span>C-term</span> </div>
<b>Purity</b>	> 95% as determined by BisTris PAGE > 95% as determined by HPLC
<b>Endotoxin Level</b>	Less than 1EU per µg by the LAL method.
<b>Biological Activity</b>	Measured by its binding ability in a functional ELISA. Immobilized CDCP1, His, Rhesus macaque at 5µg/ml (100µl/Well) on the plate can bind AntiCDCP1 Antibody, hFc Tag. Test result was comparable to standard batch.
<b>Expression System</b>	HEK293
<b>Theoretical Molecular Weight</b>	73.2 kDa
<b>Apparent Molecular Weight</b>	Due to glycosylation, the protein migrates to 80-115 kDa based on Bis-Tris PAGE result.
<b>Formulation</b>	Lyophilized from 0.22µm filtered solution in PBS (pH 7.4).
<b>Reconstitution</b>	Centrifuge the tube before opening. Reconstituting to a concentration more than 100 µg/ml is recommended. Dissolve the lyophilized protein in distilled water.
<b>Storage &amp; Stability</b>	Upon receiving, the product remains stable up to 6 months at -20 °C or below. Upon reconstitution, the product should be stable for 3 months at -80 °C. Avoid repeated freeze-thaw cycles.

## Examples

CDCP1, His, Rhesus macaque on Bis-Tris PAGE under reduced condition. The purity is greater than 95%.



Immobilized CDCP1, His, Rhesus macaque, His Tag at 5 µg/ml (100 µl/well) on the plate. Dose response curve for Anti-CDCP1 Antibody, hFc Tag with the EC<sub>50</sub> of 8.6ng/ml determined by ELISA.



The purity of CDCP1, His, Rhesus macaque is greater than 95% as determined by SEC-HPLC.

## Background

**Target Background :** Tumor metastasis depends on the dynamic regulation of cell adhesion through  $\beta$ 1-integrin. The Cub-Domain Containing Protein-1, CDCP1, is a transmembrane glycoprotein which regulates cell adhesion. Overexpression and loss of CDCP1 have been observed in the same cancer types to promote metastatic progression.

**Synonyms :** CDCP1; CD318; SIMA135; TRASK; UNQ2486; PRO5773

**For research use only. Not intended for human or animal clinical trials, therapeutic or diagnostic use.**

Manufacturer: Nanjing GenScript Biotech Co., Ltd. No. 28Yongxi Road, Jiangning District, Nanjing, Jiangsu, China