

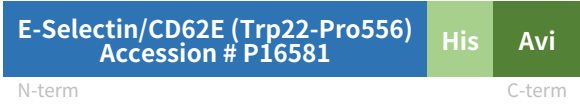
Rev03
 Update: Aug,08,2025

DATASHEET

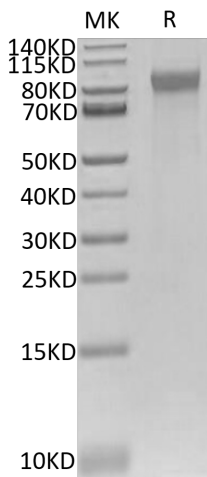
E-Selectin/CD62E, His & Avi, Human

Cat. No.: Z05265

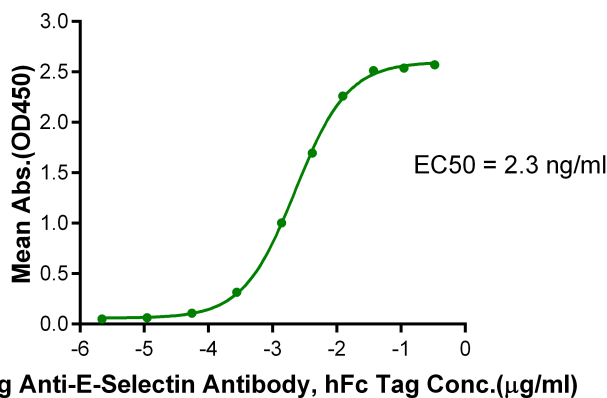
Product Introduction

Species	Human
Protein Construction	 <p style="text-align: center;">N-term C-term</p>
Purity	<p>> 95% as determined by BisTris PAGE</p> <p>> 95% as determined by HPLC</p>
Endotoxin Level	Less than 1EU per µg by the LAL method.
Biological Activity	Measured by its binding ability in a functional ELISA. Immobilized E-Selectin/CD62E, His & Avi, Human at 1µg/ml (100µl/Well) on the plate can bind AntiESelectin Antibody, hFc Tag. Test result was comparable to standard batch.
Expression System	HEK293
Theoretical Molecular Weight	61.6 kDa
Apparent Molecular Weight	Due to glycosylation, the protein migrates to 80-100 kDa based on Bis-Tris PAGE result.
Formulation	Lyophilized from 0.22µm filtered solution in PBS (pH 7.4).
Reconstitution	Centrifuge the tube before opening. Reconstituting to a concentration more than 100 µg/ml is recommended. Dissolve the lyophilized protein in distilled water.
Storage & Stability	Upon receiving, the product remains stable up to 6 months at -20 °C or below. Upon reconstitution, the product should be stable for 3 months at -80 °C. Avoid repeated freeze-thaw cycles.

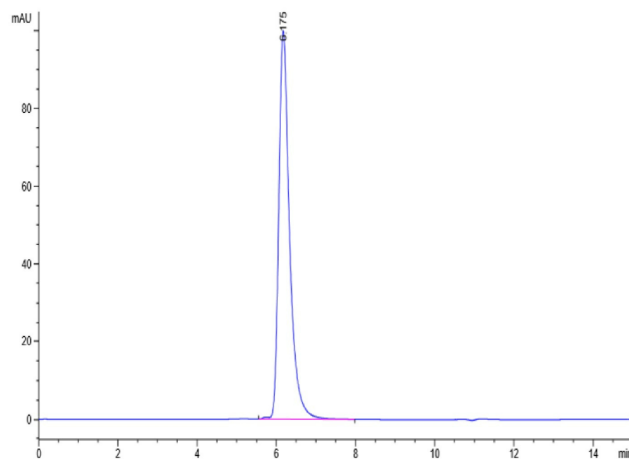
Examples



E-Selectin/CD62E, His & Avi, Human on Bis-Tris PAGE under reduced condition. The purity is greater than 95%.



Immobilized E-Selectin/CD62E, His & Avi, Human, His Tag at 1µg/ml (100µl/well) on the plate. Dose response curve for Anti-E-Selectin Antibody, hFc Tag with the EC50 of 2.3ng/ml determined by ELISA.



The purity of E-Selectin/CD62E, His & Avi, Human is greater than 95% as determined by SEC-HPLC.

Background

Target Background : E-Selectin (Endothelial Leukocyte Adhesion Molecule-1, ELAM-1, CD62E), a member of the Selectin family, is a 107 - 115 kDa cell surface glycoprotein. It is transiently expressed on vascular endothelial cells in response to IL-1 beta and TNF-alpha. E-selectin mediates in the adhesion of blood neutrophils in cytokine-activated endothelium through interaction with SELPLG/PSGL1. May have a role in capillary morphogenesis.

Synonyms : CD62E; ELAM; ELAM1; ESEL; E-Selectin; LECAM2; SELE; selectin E; RP1-117P20.2

For research use only. Not intended for human or animal clinical trials, therapeutic or diagnostic use.

Manufacturer: Nanjing GenScript Biotech Co., Ltd. No. 28Yongxi Road, Jiangning District, Nanjing, Jiangsu, China