

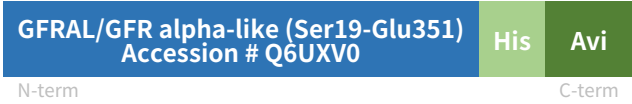
Rev03  
 Update: Aug,08,2025

**DATASHEET**

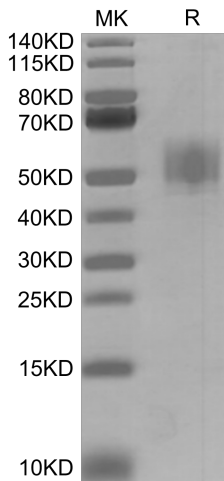
# GFRAL/GFR alpha-like, His & Avi, Human

Cat. No.: Z05349

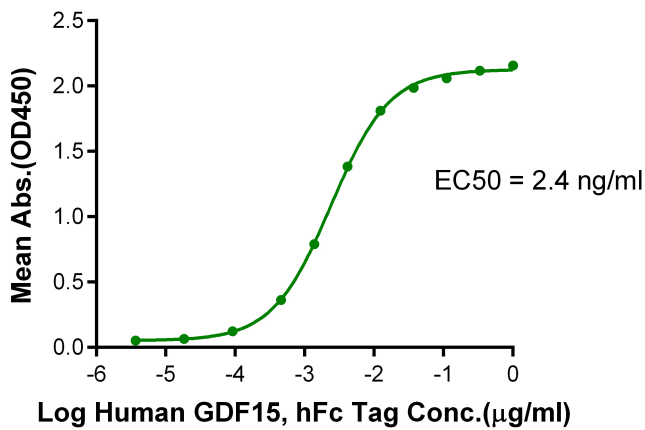
## Product Introduction

<b>Species</b>	Human
<b>Protein Construction</b>	 <p>GFRAL/GFR alpha-like (Ser19-Glu351)        Accession # Q6UXV0</p> <p>N-term His Avi C-term</p>
<b>Purity</b>	<p>&gt; 95% as determined by BisTris PAGE</p> <p>&gt; 95% as determined by HPLC</p>
<b>Endotoxin Level</b>	Less than 1EU per µg by the LAL method.
<b>Biological Activity</b>	Measured by its binding ability in a functional ELISA. Immobilized GFRAL/GFR alpha-like, His & Avi, Human at 1µg/ml (100µl/well) on the plate can bind Human GDF15, hFc Tag. Test result was comparable to standard batch.
<b>Expression System</b>	HEK293
<b>Theoretical Molecular Weight</b>	40.7 kDa
<b>Apparent Molecular Weight</b>	Due to glycosylation, the protein migrates to 48-62 kDa based on Bis-Tris PAGE result.
<b>Formulation</b>	Lyophilized from 0.22 µm filtered solution in PBS (pH 7.4).
<b>Reconstitution</b>	Centrifuge the tube before opening. Reconstituting to a concentration more than 100 µg/ml is recommended. Dissolve the lyophilized protein in distilled water.
<b>Storage &amp; Stability</b>	Upon receiving, the product remains stable up to 6 months at -20 °C or below. Upon reconstitution, the product should be stable for 3 months at -80 °C. Avoid repeated freeze-thaw cycles.

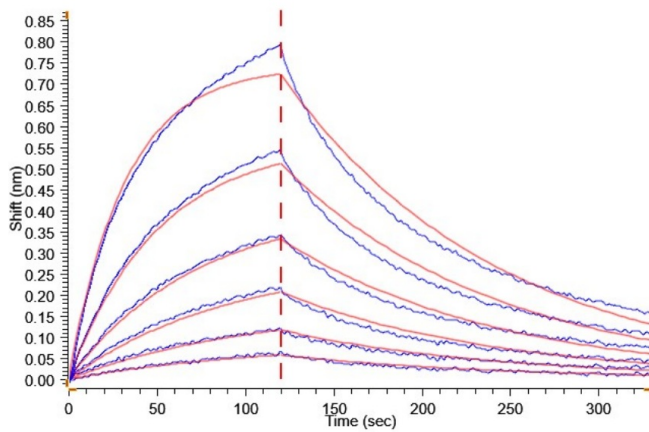
## Examples



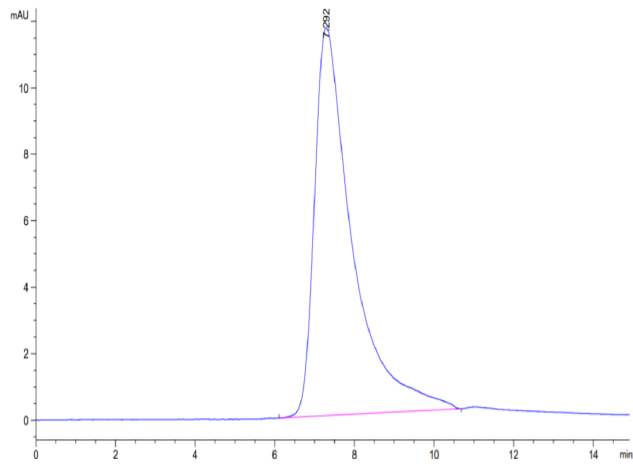
GFRAL/GFR alpha-like, His & Avi, Human on Bis-Tris PAGE under reduced condition. The purity is greater than 95%.



Immobilized GFRAL/GFR alpha-like, His & Avi, Human, His Tag at 0.5µg/ml (100µl/well) on the plate. Dose response curve for Human GDF15, hFc Tag with the EC50 of 2.4ng/ml determined by ELISA.



Loaded Human GDF15, hFc Tag on ProA-Biosensor can bind GFRAL/GFR alpha-like, His & Avi, Human, His-Avi Tag with an affinity constant of 35.50 nM as determined in BLI assay (Gator® Prime).



The purity of GFRAL/GFR alpha-like, His & Avi, Human is greater than 95% as determined by SEC-HPLC.

## Background

**Target Background :** GFR alpha-like (GDNF receptor-alpha-like) is a distant member of the GDNFR family of proteins. Mature human GFR alpha-like is a 376 amino acid (aa) type I transmembrane protein. It contains a 333 aa extracellular domain, a 20 aa transmembrane domain and a 23 aa cytoplasmic domain. GFRAL is a brainstem-restricted receptor for GDF15 which regulates food intake, energy expenditure and body weight in response to metabolic and toxin-induced stresses.

**Synonyms :** GFR alpha-like; GFRAL; GRAL; C6orf144

**For research use only. Not intended for human or animal clinical trials, therapeutic or diagnostic use.**

Manufacturer: Nanjing GenScript Biotech Co., Ltd. No. 28Yongxi Road, Jiangning District, Nanjing, Jiangsu, China