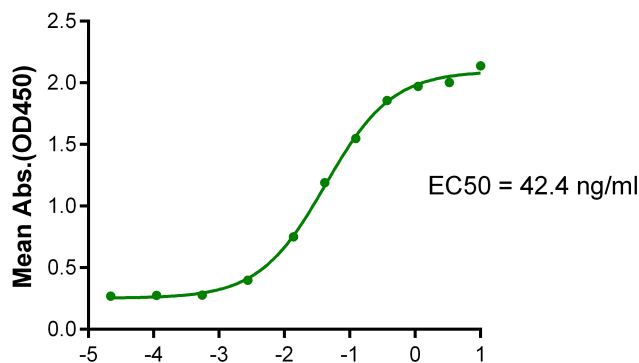
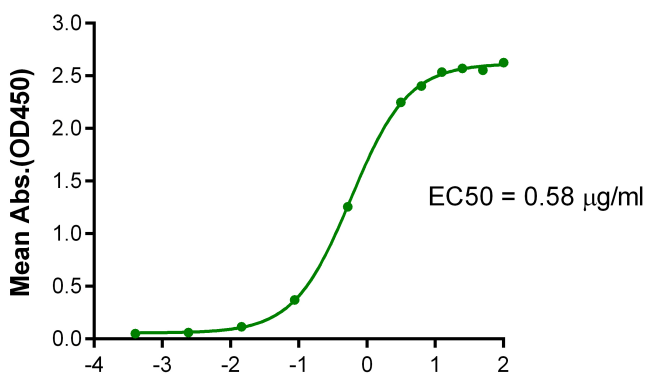


Human NKG2D, hFc Tag captured on CM5 Chip via Protein A can bind MICB, His & Avi, Human, His Tag with an affinity constant of 83.31 nM as determined in SPR assay (Biacore T200).



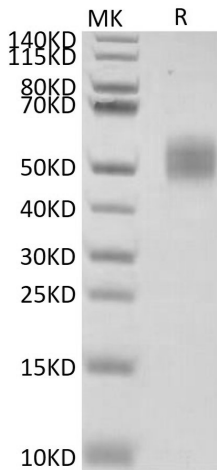
Immobilized MICB, His & Avi, Human, His Tag at 1 $\mu$ g/ml (100 $\mu$ l/well) on the plate. Dose response curve for Anti-MICB Antibody, hFc Tag with the EC50 of 42.4ng/ml determined by ELISA.

Log Anti-MICB Antibody, hFc Tag Conc.( $\mu$ g/ml)

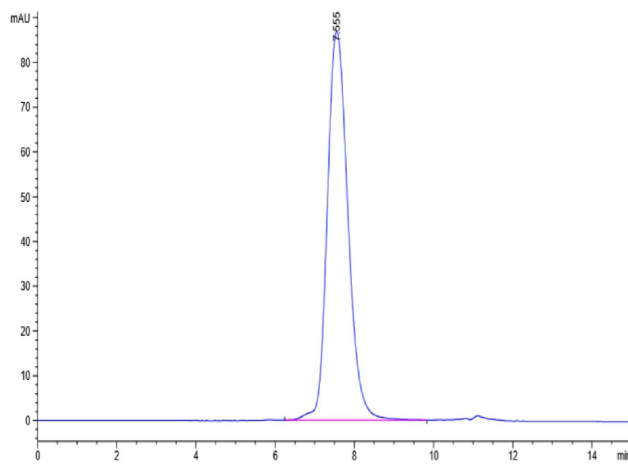


Immobilized MICB, His & Avi, Human, His Tag at 5 $\mu$ g/ml (100 $\mu$ l/well) on the plate. Dose response curve for Human NKG2D, hFc Tag with the EC50 of 0.58 $\mu$ g/ml determined by ELISA.

Log Human NKG2D, hFc Tag Conc.( $\mu$ g/ml)



MICB, His & Avi, Human on Bis-Tris PAGE under reduced conditions. The purity is greater than 95%.



The purity of MICB, His & Avi, Human is greater than 95% as determined by SEC-HPLC.

## Background

**Target Background :** MICB (MHC class I chain-related gene B) is a transmembrane glycoprotein that functions as a ligand for NKG2D. A closely related protein, MICA, shares 85% amino acid identity with MICB. MICB seems to have no role in antigen presentation. Acts as a stress-induced self-antigen that is recognized by gamma delta T cells. Ligand for the KLRK1/NKG2D receptor. Binding to KLRK1 leads to cell lysis.

**Synonyms :** MICB; MIC-B; PERB11.2

**For research use only. Not intended for human or animal clinical trials, therapeutic or diagnostic use.**

Manufacturer: Nanjing GenScript Biotech Co., Ltd. No. 28 Yongxi Road, Jiangning District, Nanjing, Jiangsu, China