

Rev04  
Update: Aug,08,2025**DATASHEET**

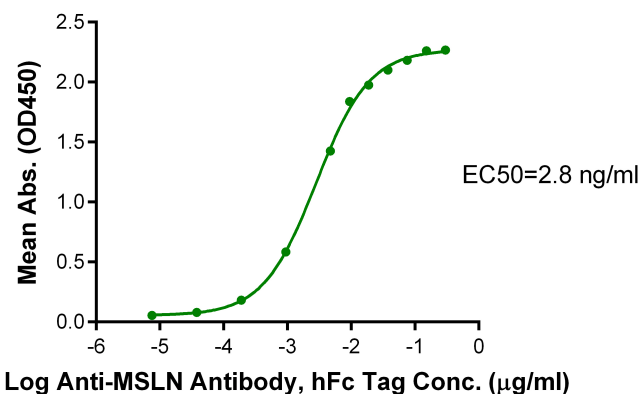
# MSLN/Mesothelin(296-598), His, Cynomolgus

Cat. No.: Z03873

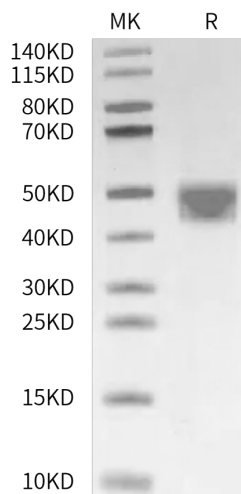
## Product Introduction

<b>Species</b>	Cynomolgus				
<b>Protein Construction</b>	<table><tr><td>MSLN/Mesothelin (Asp296-Ser598) Accession # XP_005590873.3</td><td>His</td></tr><tr><td>N-term</td><td>C-term</td></tr></table>	MSLN/Mesothelin (Asp296-Ser598) Accession # XP_005590873.3	His	N-term	C-term
MSLN/Mesothelin (Asp296-Ser598) Accession # XP_005590873.3	His				
N-term	C-term				
<b>Purity</b>	> 95% as determined by Bis-Tris PAGE > 95% as determined by HPLC				
<b>Endotoxin Level</b>	Less than 1EU per µg by the LAL method.				
<b>Biological Activity</b>	Immobilized MSLN/Mesothelin(296-598), His, Cynomolgus (Cat.No.: Z03873) at 1 µg/ml (100µl/Well) on the plate can bind Anti-MSLN Antibody.				
<b>Expression System</b>	HEK293				
<b>Theoretical Molecular Weight</b>	34.87 kDa				
<b>Apparent Molecular Weight</b>	Due to glycosylation, the protein migrates to 43-53 kDa based on Bis-Tris PAGE result.				
<b>Formulation</b>	Lyophilized from a 0.22 µm filtered solution in PBS, pH 7.4.				
<b>Reconstitution</b>	Centrifuge the tube before opening. Reconstituting to a concentration more than 100 µg/ml is recommended. Dissolve the lyophilized protein in distilled water.				
<b>Storage &amp; Stability</b>	Upon receiving, the product remains stable up to 6 months at -20 °C or below. Upon reconstitution, the product should be stable for 3 months at -80 °C. Avoid repeated freeze-thaw cycles.				

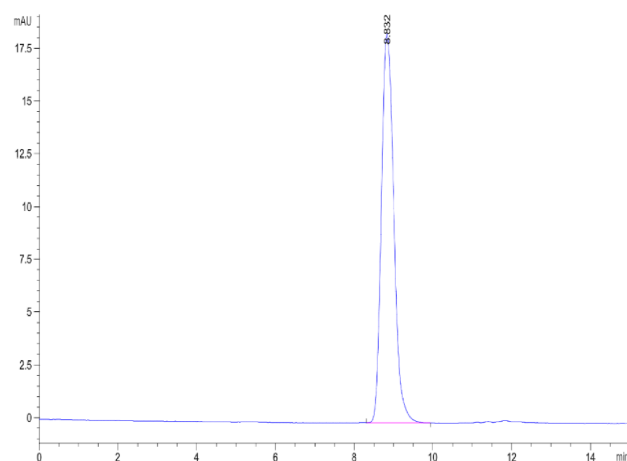
## Examples



Immobilized MSLN/Mesothelin(296-598), His, Cynomolgus, His Tag at 1 µg/ml (100 µl/well) on the plate. Dose response curve for Anti-MSLN Antibody, hFc Tag with the EC50 of 2.8 ng/ml determined by ELISA.



MSLN/Mesothelin(296-598), His, Cynomolgus on Bis-Tris PAGE under reduced condition. The purity is greater than 95%.



The purity of MSLN/Mesothelin(296-598), His, Cynomolgus is greater than 95% as determined by SEC-HPLC.

## Background

**Target Background :** Mesothelin, also known as MSLN, is encoded by the MSLN gene. It encodes a precursor protein of 71 kDa that is processed to a 31 kDa shed protein called megakaryocyte potentiating factor (MPF) and a 40 kDa fragment, mesothelin. MSLN is attached to the cell membrane by a glycosyl-phosphatidylinositol (GPI) anchor. It is a differentiation antigen which is highly expressed in several human cancers, including virtually all mesotheliomas and pancreatic adenocarcinomas.

**Synonyms :** MSLN; CAK1; Mesothelin; MPF; MPFSMRP; SMR

**For laboratory research use only. Direct human use, including taking orally and injection and clinical use are forbidden.**

Manufacturer: Nanjing GenScript Biotech Co., Ltd. No. 28Yongxi Road, Jiangning District, Nanjing, Jiangsu, China