

Rev04  
 Update: Aug,08,2025

**DATASHEET**

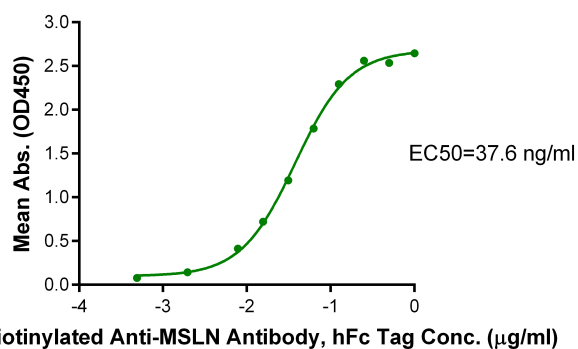
# MSLN/Mesothelin(306-590) hFc Chimera, Cynomolgus

Cat. No.: Z03874

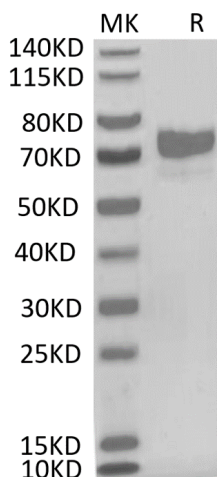
## Product Introduction

|                                     |   |
|-------------------------------------|---|
| <b>Species</b>                      | Cynomolgus  |
| <b>Protein Construction</b>         | <div style="display: flex; justify-content: space-around; align-items: center;"> <div style="background-color: #0056b3; color: white; padding: 5px; text-align: center;"> <b>MSLN/Mesothelin (Asp306-Gly590)</b><br/>           Accession # XP_065393170.1         </div> <div style="background-color: #76b82a; color: white; padding: 5px; text-align: center;"> <b>hFc</b> </div> </div> <div style="display: flex; justify-content: space-around; margin-top: 5px;"> <span>N-term</span> <span>C-term</span> </div> |
| <b>Purity</b>                       | > 95% as determined by Bis-Tris PAGE<br>> 95% as determined by HPLC   |
| <b>Endotoxin Level</b>              | Less than 1EU per µg by the LAL method.   |
| <b>Biological Activity</b>          | Immobilized MSLN/Mesothelin(306-590) hFc Chimera, Cynomolgus (Cat.No.: Z03874) at 1 µg/ml (100µl/Well) on the plate can bind Biotinylated Anti-MSLN Antibody.   |
| <b>Expression System</b>            | HEK293  |
| <b>Theoretical Molecular Weight</b> | 58.6 kDa  |
| <b>Apparent Molecular Weight</b>    | Due to glycosylation, the protein migrates to 70-80 kDa based on Bis-Tris PAGE result.  |
| <b>Formulation</b>                  | Lyophilized from a 0.22 µm filtered solution in PBS, pH 7.4.  |
| <b>Reconstitution</b>               | Centrifuge the tube before opening. Reconstituting to a concentration more than 100 µg/ml is recommended. Dissolve the lyophilized protein in distilled water.  |
| <b>Storage &amp; Stability</b>      | Upon receiving, the product remains stable up to 6 months at -20 °C or below. Upon reconstitution, the product should be stable for 3 months at -80 °C. Avoid repeated freeze-thaw cycles.  |

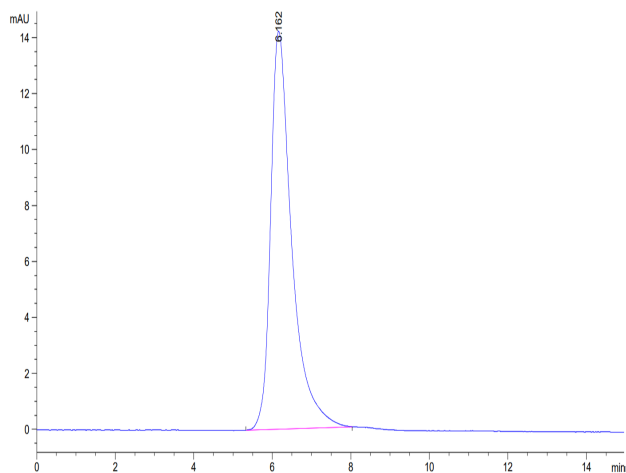
## Examples



Immobilized MSLN/Mesothelin(306-590) hFc Chimera, Cynomolgus, hFc Tag at 1  $\mu\text{g/ml}$  (100  $\mu\text{l/well}$ ) on the plate. Dose response curve for Biotinylated Anti-MSLN Antibody, hFc Tag with the EC50 of 37.6 ng/ml determined by ELISA.



MSLN/Mesothelin(306-590) hFc Chimera, Cynomolgus on Bis-Tris PAGE under reduced condition. The purity is greater than 95%.



The purity of MSLN/Mesothelin(306-590) hFc Chimera, Cynomolgus is greater than 95% as determined by SEC-HPLC.

## Background

**Target Background :** Mesothelin, also known as MSLN, is encoded by the MSLN gene. It encodes a precursor protein of 71 kDa that is processed to a 31 kDa shed protein called megakaryocyte potentiating factor (MPF) and a 40 kDa fragment, mesothelin. MSLN is attached to the cell membrane by a glycosyl-phosphatidylinositol (GPI) anchor. It is a differentiation antigen which is highly expressed in several human cancers, including virtually all mesotheliomas and pancreatic adenocarcinomas.

**Synonyms :** MSLN; CAK1; Mesothelin; MPF; MPFSMRP; SMR

**For laboratory research use only. Direct human use, including taking orally and injection and clinical use are forbidden.**

Manufacturer: Nanjing GenScript Biotech Co., Ltd. No. 28Yongxi Road, Jiangning District, Nanjing, Jiangsu, China