

Rev04
 Update: Aug,08,2025

DATASHEET

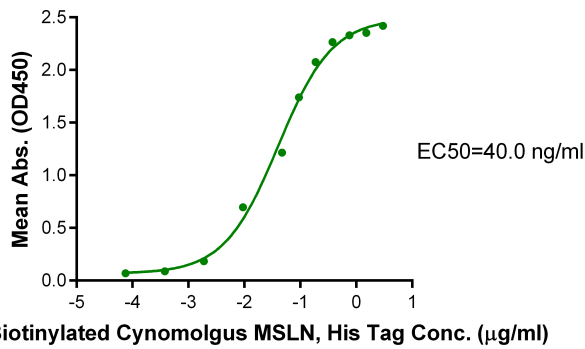
MSLN/Mesothelin(296-580)[Biotin], His, Cynomolgus

Cat. No.: Z03875

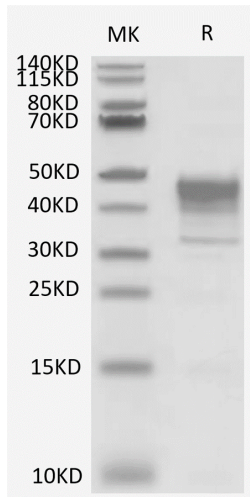
Product Introduction

Species	Cynomolgus
Protein Construction	<div style="display: flex; align-items: center; gap: 10px;"> <div style="background-color: #0056b3; color: white; padding: 5px; text-align: center;"> MSLN/Mesothelin (Asp296-Gly580) Accession # XP_005590873.4 </div> <div style="background-color: #76b82a; color: white; padding: 5px; text-align: center;"> His </div> </div> <div style="display: flex; justify-content: space-around; margin-top: 5px; font-size: small;"> N-term C-term </div>
Conjugate	Biotin
Purity	> 95% as determined by Bis-Tris PAGE > 95% as determined by HPLC
Endotoxin Level	Less than 1EU per µg by the LAL method.
Biological Activity	Immobilized Anti-MSLN Antibody at 2 µg/ml (100µl/Well) on the plate can bind MSLN/Mesothelin(296-580)[Biotin], His, Cynomolgus (Cat.No.: Z03875).
Expression System	HEK293
Theoretical Molecular Weight	33 kDa
Apparent Molecular Weight	Due to glycosylation, the protein migrates to 35-50 kDa based on Bis-Tris PAGE result.
Formulation	Lyophilized from a 0.22 µm filtered solution in PBS, pH 7.4.
Reconstitution	Centrifuge the tube before opening. Reconstituting to a concentration more than 100 µg/ml is recommended. Dissolve the lyophilized protein in distilled water.
Storage & Stability	Upon receiving, the product remains stable up to 6 months at -20 °C or below. Upon reconstitution, the product should be stable for 3 months at -80 °C. Avoid repeated freeze-thaw cycles.

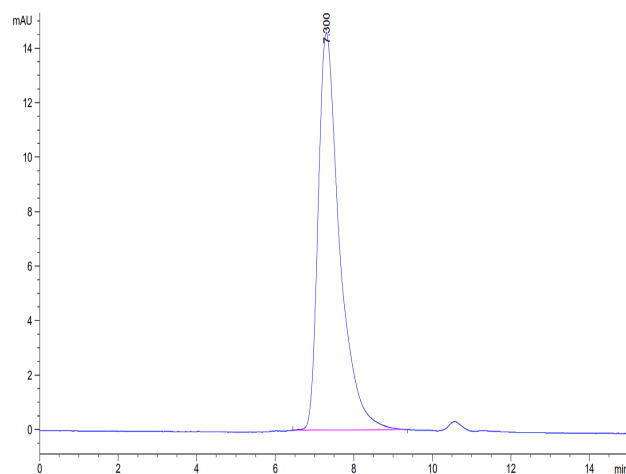
Examples



Immobilized Anti-MSLN Antibody, hFc Tag at 2 µg/ml (100 µl/well) on the plate. Dose response curve for MSLN/Mesothelin(296-580)[Biotin], His, Cynomolgus, His Tag with the EC50 of 40.0 ng/ml determined by ELISA.



MSLN/Mesothelin(296-580)[Biotin], His, Cynomolgus on Bis-Tris PAGE under reduced condition. The purity is greater than 95%.



The purity of MSLN/Mesothelin(296-580)[Biotin], His, Cynomolgus is greater than 95% as determined by SEC-HPLC.

Background

Target Background : Mesothelin, also known as MSLN, is encoded by the MSLN gene. It encodes a precursor protein of 71 kDa that is processed to a 31 kDa shed protein called megakaryocyte potentiating factor (MPF) and a 40 kDa fragment, mesothelin. MSLN is attached to the cell membrane by a glycosyl-phosphatidylinositol (GPI) anchor. It is a differentiation antigen which is highly expressed in several human cancers, including virtually all mesotheliomas and pancreatic adenocarcinomas.

Synonyms : MSLN; CAK1; Mesothelin; MPF; MPFSMRP; SMR

For laboratory research use only. Direct human use, including taking orally and injection and clinical use are forbidden.

Manufacturer: Nanjing GenScript Biotech Co., Ltd. No. 28Yongxi Road, Jiangning District, Nanjing, Jiangsu, China