

Rev04
 Update: Aug,08,2025

DATASHEET

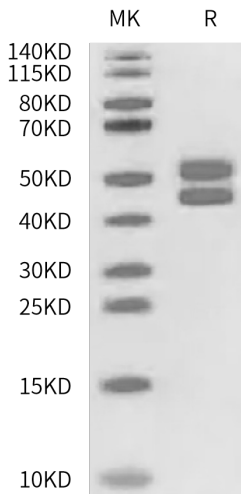
CD3E&CD3D hFc Chimera, Human

Cat. No.: Z03987

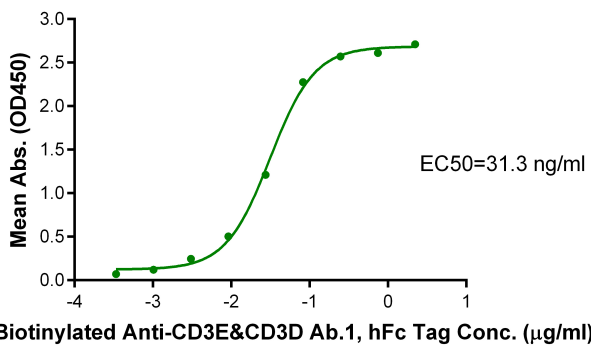
Product Introduction

Species	Human
Protein Construction	<div style="display: flex; align-items: center; justify-content: space-between;"> <div style="background-color: #0056b3; color: white; padding: 5px; text-align: center;"> CD3E & CD3D [Asp23-Asp126 (CD3E) & Phe22-Ala105 (CD3D)] Accession # P07766 (CD3E) & P04234 (CD3D) </div> <div style="background-color: #76923c; color: white; padding: 5px; text-align: center;">hFc</div> </div> <div style="display: flex; justify-content: space-between; margin-top: 5px;"> N-term C-term </div>
Purity	> 95% as determined by Bis-Tris PAGE > 95% as determined by HPLC
Endotoxin Level	Less than 1EU per µg by the LAL method.
Biological Activity	Measured by its binding ability in a functional ELISA. Immobilized CD3E&CD3D hFc Chimera, Human at 2µg/ml (100µl/well) on the plate can bind Anti-CD3E&CD3D Ab.2, mFc Tag. Test result was comparable to standard batch.
Expression System	HEK293
Theoretical Molecular Weight	37.8 kDa (CD3E) and 35.4 kDa (CD3D)
Apparent Molecular Weight	Due to glycosylation, the protein migrates to 48-58 kDa (CD3E) and 42-48 kDa (CD3D) based on Bis-Tris PAGE result.
Formulation	Lyophilized from a 0.22 µm filtered solution in PBS, (pH 7.4).
Reconstitution	Centrifuge the tube before opening. Reconstituting to a concentration more than 100 µg/ml is recommended. Dissolve the lyophilized protein in distilled water.
Storage & Stability	Upon receiving, the product remains stable up to 6 months at -20 °C or below. Upon reconstitution, the product should be stable for 3 months at -80 °C. Avoid repeated freeze-thaw cycles.

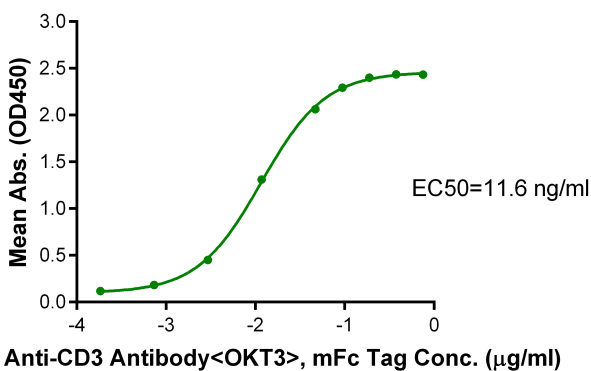
Examples



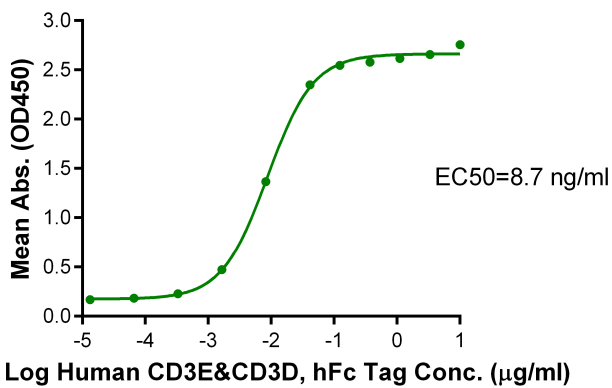
CD3E&CD3D hFc Chimera, Human on Bis-Tris PAGE under reduced condition. The purity is greater than 95%.



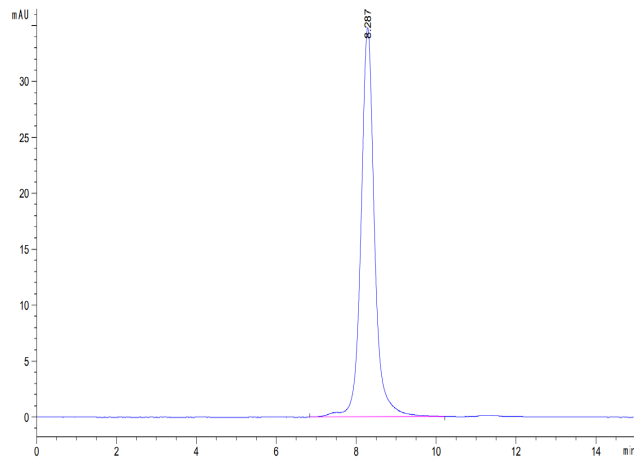
Immobilized CD3E&CD3D hFc Chimera, Human at 0.5 µg/ml(100 µl/Well).Dose response curve for Biotinylated Anti-CD3E&CD3D Ab.1, hFc Tag with the EC50 of 31.3 ng/ml determined by ELISA.



Immobilized CD3E&CD3D hFc Chimera, Human, hFc Tag at 2 µg/ml(100 µl/well) on the plate. Dose response curve for Anti-CD3 Antibody, mFc Tag with the EC50 of 11.6 ng/ml determined by ELISA.



Immobilized Tebentafusp, His Tag at 1µg/ml (100 µl/well) on the plate. Dose response curve for CD3E&CD3D hFc Chimera, Human, hFc Tag with the EC50 of 8.7 ng/ml determined by ELISA.



The purity of CD3E&CD3D hFc Chimera, Human was greater than 95% as determined by SEC-HPLC.

Background

Target Background : T-cell surface glycoprotein CD3 epsilon & CD3 delta chain, also known as CD3E & CD3D , are single-pass type I membrane proteins. When antigen presenting cells (APCs) activate T-cell receptor (TCR), TCR-mediated signals are transmitted across the cell membrane by the CD3 chains CD3D, CD3E, CD3G and CD3Z. All CD3 chains contain immunoreceptor tyrosine-based activation motifs (ITAMs) in their cytoplasmic domain.

Synonyms : CD3; CD3e; CD3E; CD3d; T3D; CD3D; CD3E&CD3D; CD3 delta&CD3 epsilon

For research use only. Not intended for human or animal clinical trials, therapeutic or diagnostic use.

Manufacturer: Nanjing GenScript Biotech Co., Ltd. No. 28 Yongxi Road, Jiangning District, Nanjing, Jiangsu, China