


Rev04  
 Update: Aug,08,2025

**DATASHEET**

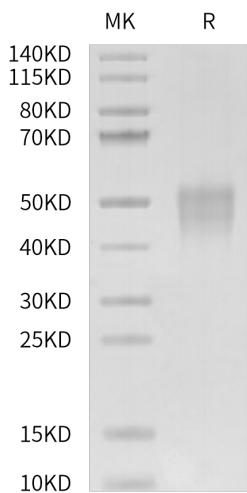
# CD28[Biotin], His & Avi, Human/Cynomolgus/Rhesus macaque

Cat. No.: Z04102

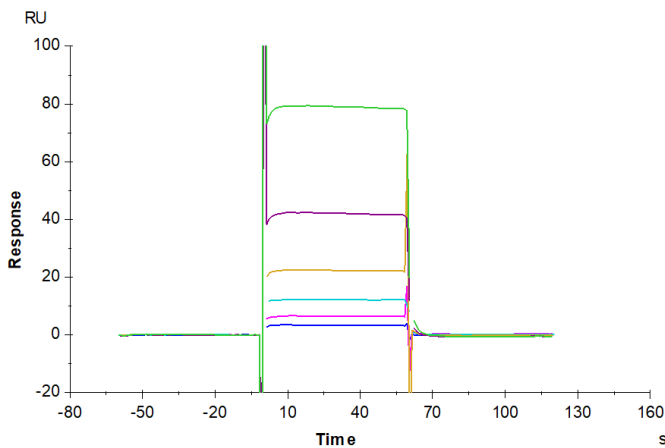
## Product Introduction

<b>Species</b>	Human/Cynomolgus/Rhesus macaque
<b>Protein Construction</b>	
<b>Conjugate</b>	Biotin
<b>Purity</b>	> 95% as determined by Bis-Tris PAGE
<b>Endotoxin Level</b>	Less than 1EU per µg by the LAL method.
<b>Biological Activity</b>	Measured by its binding ability in a functional ELISA. Immobilized AntiCD28 Antibody, hFc Tag at 2µg/ml (100µl/well) on the plate can bind CD28[Biotin], His & Avi, Human/Cynomolgus/Rhesus macaque. Test result was comparable to standard batch.
<b>Expression System</b>	HEK293
<b>Theoretical Molecular Weight</b>	18.2 kDa
<b>Apparent Molecular Weight</b>	Due to glycosylation, the protein migrates to 38-55 kDa based on Bis-Tris PAGE result.
<b>Formulation</b>	Lyophilized from 0.22µm filtered solution in PBS (pH 7.4).
<b>Reconstitution</b>	Centrifuge the tube before opening. Reconstituting to a concentration more than 100 µg/ml is recommended. Dissolve the lyophilized protein in distilled water.
<b>Storage &amp; Stability</b>	Upon receiving, the product remains stable up to 6 months at -20 °C or below. Upon reconstitution, the product should be stable for 3 months at -80 °C. Avoid repeated freeze-thaw cycles.

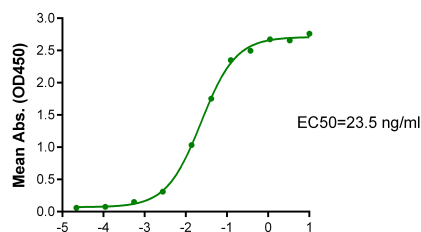
## Examples



CD28[Biotin], His & Avi, Human/Cynomolgus/Rhesus macaque on Bis-Tris PAGE under reduced condition. The purity is greater than 95%.



Human B7-1, hFc Tag captured on CM5 Chip via Protein A can bind CD28[Biotin], His & Avi, Human/Cynomolgus/Rhesus macaque, His-Avi Tag with an affinity constant of 41.59  $\mu\text{M}$  as determined in SPR assay (Biacore T200).



Log Biotinylated Human / Cynomolgus / Rhesus macaque CD28, His Tag Conc. ( $\mu\text{g/ml}$ )

Immobilized Anti-CD28 Antibody, hFc Tag at 2  $\mu\text{g/ml}$  (100  $\mu\text{L/well}$ ) on the plate. Dose response curve for CD28[Biotin], His & Avi, Human/Cynomolgus/Rhesus macaque, His Tag with the EC50 of 23.5 ng/ml determined by ELISA.

## Background

**Target Background :** CD28 is the receptor for CD80 (B7-1) and CD86 (B7-2) proteins. When activated by Toll-like receptor ligands, the CD80 expression is upregulated in antigen presenting cells (APCs). The CD86 expression on antigen presenting cells is constitutive. CD28 is the only B7 receptor constitutively expressed on naive T cells.

**Synonyms :** CD28 antigen (Tp44); CD28 molecule; CD28; MGC138290

**For research use only. Not intended for human or animal clinical trials, therapeutic or diagnostic use.**

Manufacturer: Nanjing GenScript Biotech Co., Ltd. No. 28Yongxi Road, Jiangning District, Nanjing, Jiangsu, China