

Rev04  
 Update: Aug,08,2025
**DATASHEET**

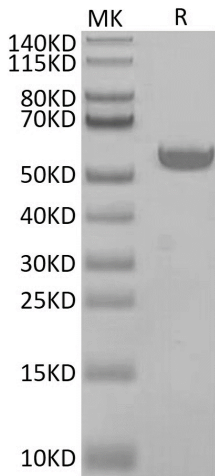
# HLA-A\*02:01&B2M&GP100 (YLEPGPVTA) Monomer[Biotin], His & Avi, Human

Cat. No.: Z06463

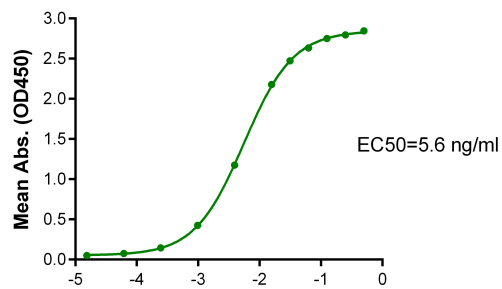
## Product Introduction

<b>Species</b>	Human
<b>Protein Construction</b>	<div style="display: flex; align-items: center;"> <div style="background-color: #0056b3; color: white; padding: 5px; margin-right: 10px;">           HLA-A*02:01&amp;B2M&amp;GP100 (YLEPGPVTA) Monomer [Gly25-Thr305(HLA-A*02:01), Ile21-Met119(B2M) and YLEPGPVTA peptide]            Accession # A0A140T913(HLA-A*02:01)&amp;P61769(B2M)&amp;YLEPGPVTA         </div> <div style="display: flex; gap: 5px;"> <div style="background-color: #90c090; padding: 5px;">His</div> <div style="background-color: #4f81bd; padding: 5px;">Avi</div> </div> </div> <p style="margin-top: 5px; font-size: small;">N-term <span style="float: right;">C-term</span></p>
<b>Conjugate</b>	Biotin
<b>Purity</b>	> 95% as determined by BisTris PAGE > 95% as determined by HPLC
<b>Endotoxin Level</b>	Less than 1EU per µg by the LAL method.
<b>Biological Activity</b>	Measured by its binding ability in a functional ELISA. Immobilized HLA-A*02:01&B2M&GP100 (YLEPGPVTA) Monomer[Biotin], His & Avi, Human at 2µg/ml (100µl/well) on the streptavidin precoated plate (5µg/ml) can bind AntiHLA - A*02:01&B2M&GP100 (YLEPGPVTA) Antibody, hFc Tag. Test result was comparable to standard batch.
<b>Expression System</b>	HEK293
<b>Theoretical Molecular Weight</b>	50.4 kDa
<b>Apparent Molecular Weight</b>	Due to glycosylation, the protein migrates to 52-62 kDa based on Bis-Tris PAGE result.
<b>Formulation</b>	Lyophilized from 0.22µm filtered solution in PBS (pH 7.4).
<b>Reconstitution</b>	Centrifuge the tube before opening. Reconstituting to a concentration more than 100 µg/ml is recommended. Dissolve the lyophilized protein in distilled water.
<b>Storage &amp; Stability</b>	Upon receiving, the product remains stable up to 6 months at -20 °C or below. Upon reconstitution, the product should be stable for 3 months at -80 °C. Avoid repeated freeze-thaw cycles.

## Examples

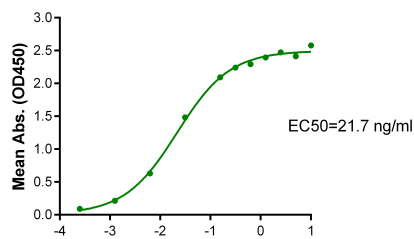


HLA-A\*02:01&B2M&GP100 (YLEPGPVTA) Monomer[Biotin], His & Avi, Human on Bis-Tris PAGE under reduced condition. The purity is greater than 95%.



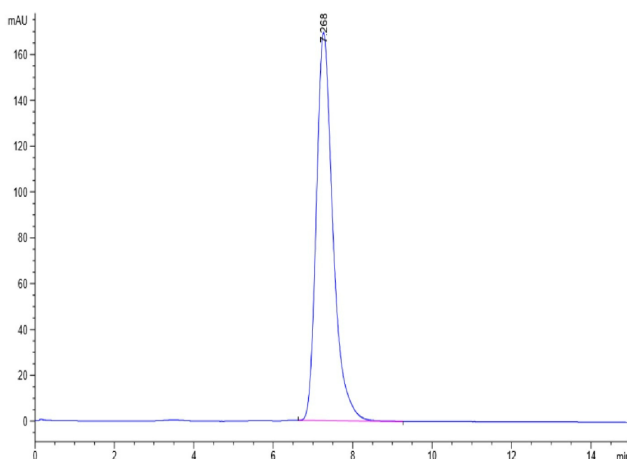
Log Anti-HLA-A\*02:01&B2M&GP100 Antibody, hFc Tag Conc. ( $\mu\text{g/ml}$ )

Immobilized HLA-A\*02:01&B2M&GP100 (YLEPGPVTA) Monomer[Biotin], His & Avi, Human, His Tag at 2  $\mu\text{g/ml}$  (100  $\mu\text{l/well}$ ) on the streptavidin precoated plate(5  $\mu\text{g/ml}$ ). Dose response curve for Anti-HLA-A\*02:01&B2M&GP100 Antibody, hFc Tag with the EC50 of 5.6 ng/ml determined by ELISA.



Log Biotinylated Human HLA-A\*02:01&B2M&GP100 (YLEPGPVTA), His-Avi Tag Conc. ( $\mu\text{g/ml}$ )

Immobilized Tebentafusp, No Tag at 2  $\mu\text{g/ml}$  (100  $\mu\text{l/well}$ ) on the plate. Dose response curve for HLA-A\*02:01&B2M&GP100 (YLEPGPVTA) Monomer[Biotin], His & Avi, Human, His Tag with the EC50 of 21.7 ng/ml determined by ELISA.



The purity of HLA-A\*02:01&B2M&GP100 (YLEPGPVTA) Monomer[Biotin], His & Avi, Humanr was greater than 95% as determined by SEC-HPLC.

## Background

**Target Background :** Glycoprotein 100, gp100 or Melanocyte protein PMEL is 661 amino acids long and is a type I transmembrane glycoprotein enriched in melanosomes, which are the melanin-producing organelles in melanocytes. This protein is involved in melanosome maturation. The Human HLA-A\*0201 gp100 (YLEPGPVTA) complex Protein is a complex of HLA-A\*0201 of the MHC Class I and YLEPGPVTA peptide of the gp100.

**Synonyms :** HLA0201; MHC I; gp100; Glycoprotein 100; ME20-M; P100

**For research use only. Not intended for human or animal clinical trials, therapeutic or diagnostic use.**

Manufacturer: Nanjing GenScript Biotech Co., Ltd. No. 28Yongxi Road, Jiangning District, Nanjing, Jiangsu, China