

Rev04
 Update: Aug,08,2025
DATASHEET

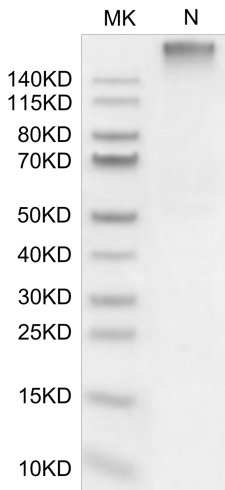
HLA-A*02:01&B2M&GP100 (YLEPGPVTA) Tetramer, His & Avi, Human

Cat. No.: Z06559

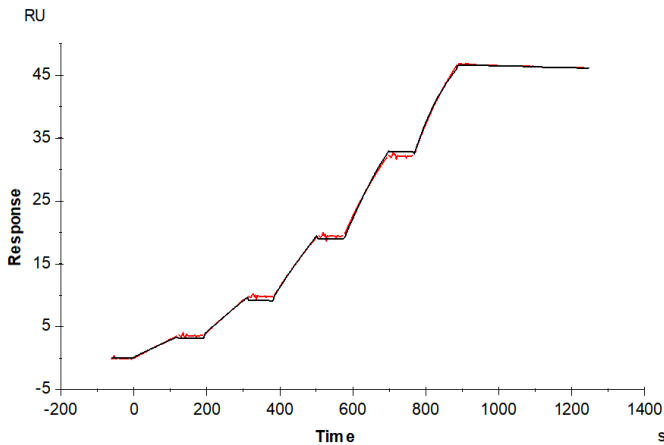
Product Introduction

Species	Human
Protein Construction	<div style="display: flex; align-items: center; justify-content: space-between;"> <div style="background-color: #0056b3; color: white; padding: 5px; text-align: center;"> HLA-A*02:01&B2M&GP100 (YLEPGPVTA) Tetramer [Gly25-Thr305(HLA-A*02:01), Ile21-Met119(B2M) and YLEPGPVTA peptide] Accession # A0A140T913(HLA-A*02:01)&P61769(B2M)&YLEPGPVTA </div> <div style="background-color: #90c090; padding: 5px; text-align: center;">His</div> <div style="background-color: #508050; padding: 5px; text-align: center;">Avi</div> </div> <div style="display: flex; justify-content: space-between; margin-top: 5px;"> N-term C-term </div>
Purity	> 95% as determined by BisTris PAGE > 95% as determined by HPLC
Endotoxin Level	Less than 1EU per µg by the LAL method.
Biological Activity	Measured by its binding ability in a functional ELISA. Immobilized HLA-A*02:01&B2M&GP100 (YLEPGPVTA) Tetramer, His & Avi, Human at 2µg/ml (100µl/Well) on the plate can bind Anti-HLA-A*02:01&B2M&GP100 (YLEPGPVTA) Antibody, hFc Tag. Test result was comparable to standard batch.
Expression System	HEK293
Theoretical Molecular Weight	258 kDa
Apparent Molecular Weight	Due to glycosylation, the protein migrates to 260-265 kDa under Non reducing (N) condition based on Bis-Tris PAGE result.
Formulation	Lyophilized from 0.22µm filtered solution in PBS (pH 7.4).
Reconstitution	Centrifuge the tube before opening. Reconstituting to a concentration more than 100 µg/ml is recommended. Dissolve the lyophilized protein in distilled water.
Storage & Stability	Upon receiving, the product remains stable up to 6 months at -20 °C or below. Upon reconstitution, the product should be stable for 3 months at -80 °C. Avoid repeated freeze-thaw cycles.

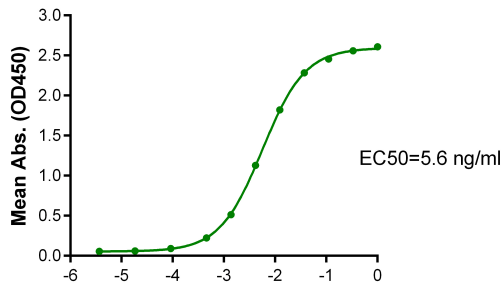
Examples



HLA-A*02:01&B2M&GP100 (YLEPGPVTA) Tetramer, His & Avi, Human on Bis-Tris PAGE under Non reducing (N) condition. The purity is greater than 95%.

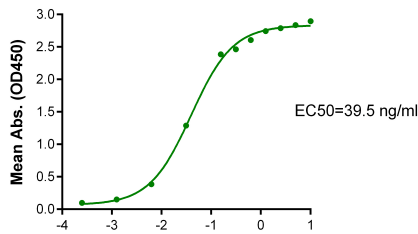


HLA-A*02:01&B2M&GP100 (YLEPGPVTA) Tetramer, His & Avi, Human, His Tag immobilized on CM5 Chip can bind Tebentafusp with an affinity constant of 0.196 nM as determined in SPR assay (Biacore T200).



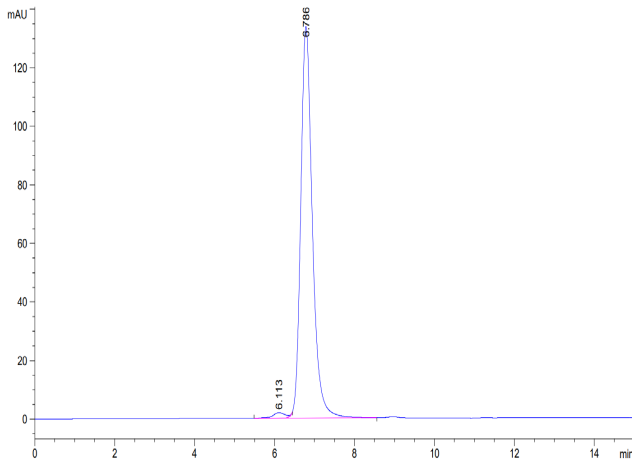
Log Anti-HLA-A*02:01&B2M&GP100 Antibody, hFc Tag Conc. (µg/ml)

Immobilized HLA-A*02:01&B2M&GP100 (YLEPGPVTA) Tetramer, His & Avi, Human, His Tag at 1 µg/ml (100 µl/well) on the plate. Dose response curve for Anti-HLA-A*02:01&B2M&GP100 Antibody, hFc Tag with the EC50 of 5.6 ng/ml determined by ELISA.



Log Human HLA-A*02:01&B2M&GP100 (YLEPGPVTA) Tetramer, His Tag Conc. (µg/ml)

Immobilized Tebentafusp, No Tag at 1 µg/ml (100 µl/well) on the plate. Dose response curve for HLA-A*02:01&B2M&GP100 (YLEPGPVTA) Tetramer, His & Avi, Human, His Tag with the EC50 of 39.5 ng/ml determined by ELISA.



The purity of HLA-A*02:01&B2M&GP100 (YLEPGPVTA) Tetramer, His & Avi, Human was greater than 95% as determined by SEC-HPLC.

Background

Target Background : Glycoprotein 100, gp100 or Melanocyte protein PMEL is 661 amino acids long and is a type I transmembrane glycoprotein enriched in melanosomes, which are the melanin-producing organelles in melanocytes. This protein is involved in melanosome maturation. The Human HLA-A*0201 gp100 (YLEPGPVTA) complex Protein is a complex of HLA-A*0201 of the MHC Class I, B2M and YLEPGPVTA peptide of the gp100.

Synonyms : HLA0201; MHC I; gp100; Glycoprotein 100; ME20-M; P100

For research use only. Not intended for human or animal clinical trials, therapeutic or diagnostic use.

Manufacturer: Nanjing GenScript Biotech Co., Ltd. No. 28Yongxi Road, Jiangning District, Nanjing, Jiangsu, China