

Rev04
 Update: Aug,08,2025
DATASHEET

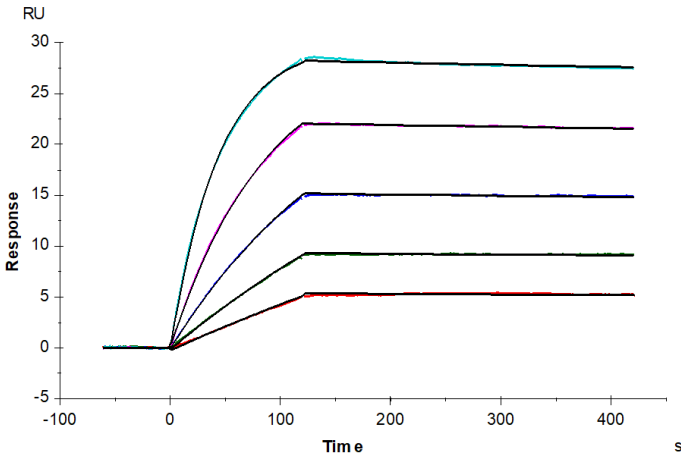
HLA-A*02:01&B2M&MAGE-A4 (GVYDGREHTV) Tetramer, His & Avi, Human

Cat. No.: Z06575

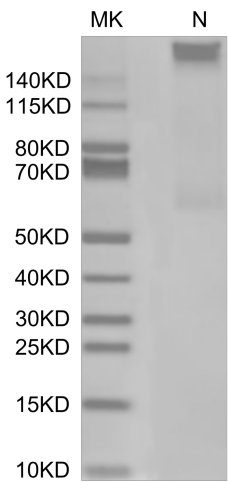
Product Introduction

Species	Human
Protein Construction	<div style="display: flex; align-items: center; justify-content: space-between;"> <div style="background-color: #0056b3; color: white; padding: 5px; text-align: center;"> HLA-A*02:01&B2M&MAGE-A4 (GVYDGREHTV) Tetramer [Gly25-Thr305(HLA-A*02:01), Ile21-Met119(B2M) and GVYDGREHTV peptide] Accession # A0A140T913(HLA-A*02:01)&P61769(B2M)&GVYDGREHTV </div> <div style="background-color: #90c090; padding: 5px; text-align: center;">His</div> <div style="background-color: #4f81bd; padding: 5px; text-align: center;">Avi</div> </div> <p style="text-align: center; margin-top: 5px;">N-term C-term</p>
Purity	> 95% as determined by BisTris PAGE > 95% as determined by HPLC
Endotoxin Level	Less than 1EU per µg by the LAL method.
Biological Activity	Measured by its binding ability in a functional ELISA. Immobilized HLA-A*02:01&B2M&MAGE-A4 (GVYDGREHTV) Tetramer, His & Avi, Human at 1µg/ml (100µl/Well) on the plate can bind Anti-HLA-A*02:01&B2M&MAGE-A4 (GVYDGREHTV) Antibody, hFc Tag. Test result was comparable to standard batch.
Expression System	HEK293
Theoretical Molecular Weight	258 kDa
Apparent Molecular Weight	Due to glycosylation, the protein migrates to 260-265 kDa under Non reducing (N) condition based on Bis-Tris PAGE result.
Formulation	Lyophilized from 0.22µm filtered solution in PBS (pH 7.4).
Reconstitution	Centrifuge the tube before opening. Reconstituting to a concentration more than 100 µg/ml is recommended. Dissolve the lyophilized protein in distilled water.
Storage & Stability	Upon receiving, the product remains stable up to 6 months at -20 °C or below. Upon reconstitution, the product should be stable for 3 months at -80 °C. Avoid repeated freeze-thaw cycles.

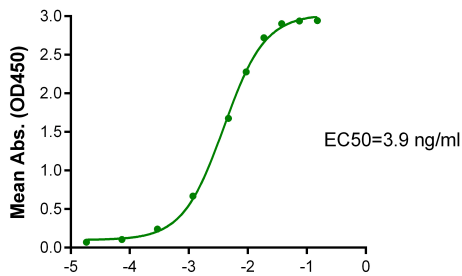
Examples



Anti-HLA-A*02:01&B2M&MAGE-A4 (GVYDGREHTV) Antibody, hFc Tag captured on CM5 Chip via Protein A can bind HLA-A*02:01&B2M&MAGE-A4 (GVYDGREHTV) Tetramer, His & Avi, Human, His Tag with an affinity constant of 8.49pM as determined in SPR assay (Biacore T200).

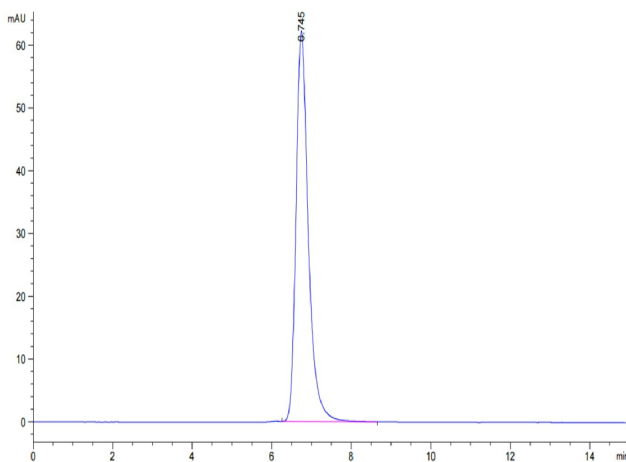


HLA-A*02:01&B2M&MAGE-A4 (GVYDGREHTV) Tetramer, His & Avi, Human on Bis-Tris PAGE under Non reducing (N) condition. The purity is greater than 95%.



Immobilized HLA-A*02:01&B2M&MAGE-A4 (GVYDGREHTV) Tetramer, His & Avi, Human, His Tag at 1 µg/ml (100 µl/well) on the plate. Dose response curve for Anti-HLA-A*02:01&B2M&MAGE-A4 (GVYDGREHTV) Antibody, hFc Tag with the EC50 of 3.9 ng/ml determined by ELISA.

Log Anti-HLA-A*02:01&B2M&MAGE-A4 Antibody, hFc Tag Conc. (µg/ml)



The purity of HLA-A*02:01&B2M&MAGE-A4 (GVYDGREHTV) Tetramer, His & Avi, Human is greater than 95% as determined by SEC-HPLC.

Background

Target Background : Melanoma-associated antigen 4 is a protein that in humans is encoded by the MAGEA4 gene. The MAGE-A4 antigen is among the most commonly expressed cancer testis antigens. The Human HLA-A*0201 MAGE-A4 (GVYDGREHTV) complex Protein is a complex of HLA-A*0201 of the MHC Class I, B2M and GVYDGREHTV peptide of the MAGE-A4.

Synonyms : HLA0201; MHC I; MAGE-A4; CT1.4; MAGE4A; MAGE4B; MAGE-X2; member 4

For research use only. Not intended for human or animal clinical trials, therapeutic or diagnostic use.

Manufacturer: Nanjing GenScript Biotech Co., Ltd. No. 28Yongxi Road, Jiangning District, Nanjing, Jiangsu, China