

Rev04
 Update: Aug,08,2025
DATASHEET

HLA-A*03:01&B2M&KRAS G12V (VVGAVGVGK) Tetramer, His & Avi, Human

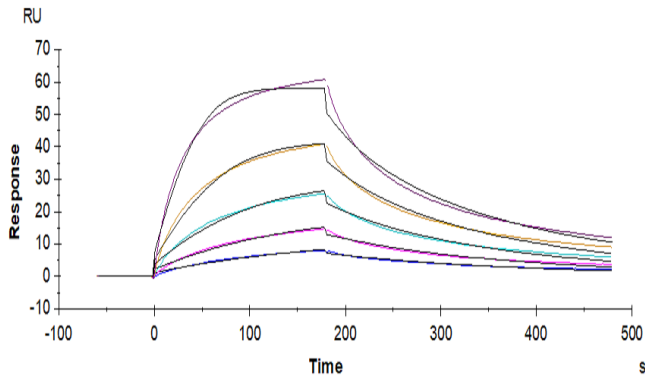
Cat. No.: Z06606

Product Introduction

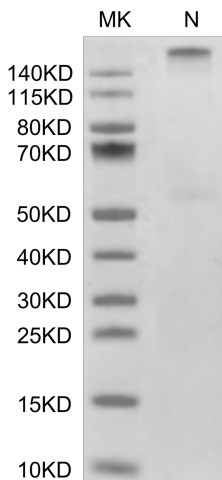
Species	Human
Protein Construction	<div style="background-color: #0056b3; color: white; padding: 5px;"> HLA-A*03:01&B2M&KRAS G12V (VVGAVGVGK) Tetramer[Gly25-Thr305(HLA-A*03:01), Ile21-Met119(B2M) and VVGAVGVGK peptide] Accession # NP_002107.3(HLA-A*03:01)&P61769(B2M)&VVGAVGVGK </div> <div style="display: flex; justify-content: space-between; align-items: center; margin-top: 5px;"> N-term <div style="background-color: #90c090; padding: 2px 5px;">His</div> <div style="background-color: #4f81bd; padding: 2px 5px;">Avi</div> C-term </div>
Purity	> 95% as determined by BisTris PAGE > 95% as determined by HPLC
Endotoxin Level	Less than 1EU per µg by the LAL method.
Biological Activity	Measured by its binding ability in a functional ELISA. Immobilized HLA-A*03:01&B2M&KRAS G12V (VVGAVGVGK) Tetramer, His & Avi, Human at 5µg/ml (100µl/Well) on the plate can bind Anti-HLA-A*03:01&B2M&KRAS G12V (VVGAVGVGK) Antibody, hFc Tag. Test result was comparable to standard batch.
Expression System	HEK293
Theoretical Molecular Weight	258 kDa
Apparent Molecular Weight	Due to glycosylation, the protein migrates to 260-265 kDa under Non reducing (N) condition based on Bis-Tris PAGE result.
Formulation	Lyophilized from 0.22µm filtered solution in PBS (pH 7.4).
Reconstitution	Centrifuge the tube before opening. Reconstituting to a concentration more than 100 µg/ml is recommended. Dissolve the lyophilized protein in distilled water.
Storage & Stability	Upon receiving, the product remains stable up to 6 months at -20 °C or below. Upon reconstitution, the product should be stable for 3 months at -80 °C. Avoid repeated freeze-thaw cycles.

Examples

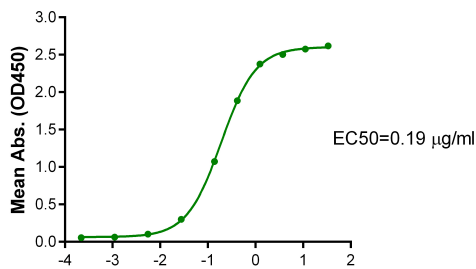
Anti-HLA-A*03:01&B2M&KRAS G12V (VVGAVGVGK) Antibody captured on CM5 Chip via Protein A can bind HLA-A*03:01&B2M&KRAS G12V (VVGAVGVGK) TetraAmer, His & Avi, Human, His Tag with an affinity constant of 42.3 nM as determined in SPR assay (Biacore T200).



HLA-A*03:01&B2M&KRAS G12V (VVGAVGVGK) Tetramer, His & Avi, Human on Bis-Tris PAGE under Non reducing (N) condition. The purity is greater than 95%.

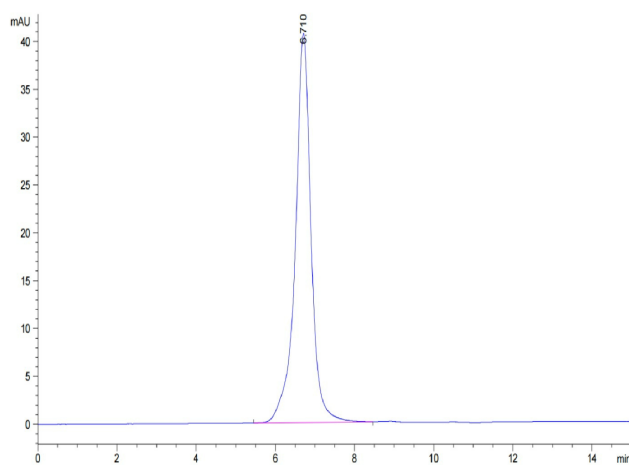


Immobilized HLA-A*03:01&B2M&KRAS G12V (VVGAVGVGK) Tetramer, His & Avi, Human, His Tag at 5 µg/ml (100 µl/well) on the plate. Dose response curve for Anti-HLA-A*03:01&B2M&KRAS G12V Antibody, hFc Tag with the EC50 of 0.19 µg/ml determined by ELISA.



Log Anti-HLA-A*03:01&B2M&KRAS G12V Antibody, hFc Tag Conc. (µg/ml)

The purity of HLA-A*03:01&B2M&KRAS G12V (VVGAVGVGK) Tetramer, His & Avi, Human is greater than 95% as determined by SEC-HPLC.



Background

Target Background : Kirsten rat sarcoma 2 viral oncogene homolog (KRAS) is the most commonly mutated oncogene in human cancer. The developments of many cancers depend on sustained expression and signaling of KRAS, which makes KRAS a high-priority therapeutic target. The virtual screening approach to discover novel KRAS inhibitors and synthetic lethality interactors of KRAS are discussed in detail.

Synonyms : MHC; KRAS; K-Ras 2; KRAS2; C-K-RAS; CFC2; K-RAS2A; K-RAS2B; K-RAS4A; K-RAS4B; KRAS1; KRAS2; NS; NS3; RASK2; GTPase Kras; KI-RAS; RALD

For research use only. Not intended for human or animal clinical trials, therapeutic or diagnostic use.

Manufacturer: Nanjing GenScript Biotech Co., Ltd. No. 28Yongxi Road, Jiangning District, Nanjing, Jiangsu, China