


Rev04
 Update: Aug,08,2025

DATASHEET

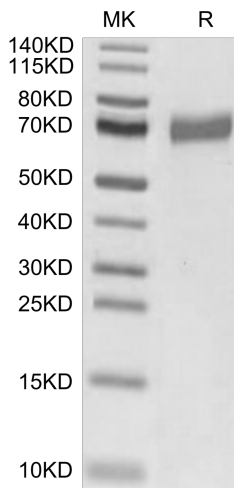
CLEC12A/MICL/CLL-1 hFc Chimera[Biotin], Avi, Human

Cat. No.: Z03960

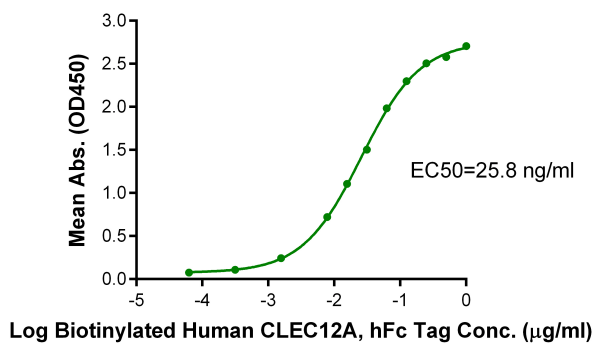
Product Introduction

Species	Human
Protein Construction	
Conjugate	Biotin
Purity	> 95% as determined by Bis-Tris PAGE > 95% as determined by HPLC
Endotoxin Level	Less than 1EU per µg by the LAL method.
Biological Activity	Immobilized Anti-CLEC12A Antibody, hFc Tag at 1 µg/ml (100µl/Well) on the plate can bind CLEC12A/MICL/CLL-1 hFc Chimera[Biotin], Avi, Human (Cat.No.: Z03960)
Expression System	HEK293
Theoretical Molecular Weight	51.7 kDa
Apparent Molecular Weight	Due to glycosylation, the protein migrates to 67-70 kDa based on Bis-Tris PAGE result.
Formulation	Lyophilized from a 0.22 µm filtered solution in PBS, (pH 7.4).
Reconstitution	It is recommended that this vial be briefly centrifuged prior to opening to bring the contents to the bottom. Reconstitute the lyophilized powder in ddH ₂ O more than 100 µg/ml.
Storage & Stability	Upon receiving, the product remains stable up to 6 months at -20 °C or below. Upon reconstitution, the product should be stable for 3 months at -80 °C. Avoid repeated freeze-thaw cycles.

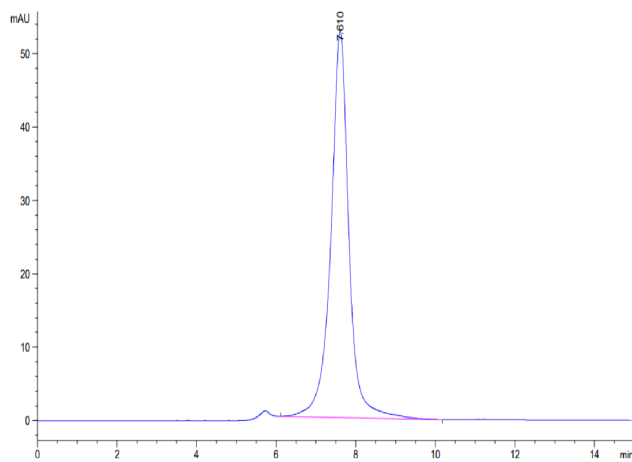
Examples



CLEC12A/MICL/CLL-1 hFc Chimera[Biotin], Avi, Human on Bis-Tris PAGE under reduced condition. The purity is greater than 95%.



Immobilized Anti-CLEC12A Antibody, hFc Tag at 1 µg/ml (100 µl/well) on the plate. Dose response curve for CLEC12A/MICL/CLL-1 hFc Chimera[Biotin], Avi, Human with the EC50 of 25.8 ng/ml determined by ELISA.



The purity of CLEC12A/MICL/CLL-1 hFc Chimera[Biotin], Avi, Human is greater than 95% as determined by SEC-HPLC.

Background

Target Background : CLEC12A, also known as CLL-1 is inhibitory C-type lectin-like receptor with ITIM motif. It can associate with signaling phosphatases SHP-1 and SHP-2. CLEC12A is a potential target due to its high expression in acute myeloid leukemia (AML) cells. And there are various therapeutic approaches using CLEC12A as a target for AML, such as CD3/CLEC12A antibody. It can recruit unstimulated primary T cells against cancer cells with CLL-1 on the surface.

Synonyms : MICL; CLL-1; CLEC12A; CLL1; DCAL2; DCAL-2; CD371; CD303; CLECSF11; CLECSF7; DLEC; HECL; PRO34150; DCAL-2

For laboratory research use only. Direct human use, including taking orally and injection and clinical use are forbidden.

Manufacturer: Nanjing GenScript Biotech Co., Ltd. No. 28Yongxi Road, Jiangning District, Nanjing, Jiangsu, China