

Rev04
 Update: Aug,08,2025

DATASHEET

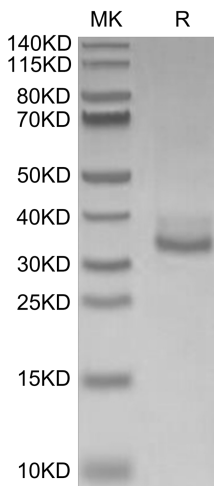
CLEC12A/MICL/CLL-1, His, Mouse

Cat. No.: Z03963

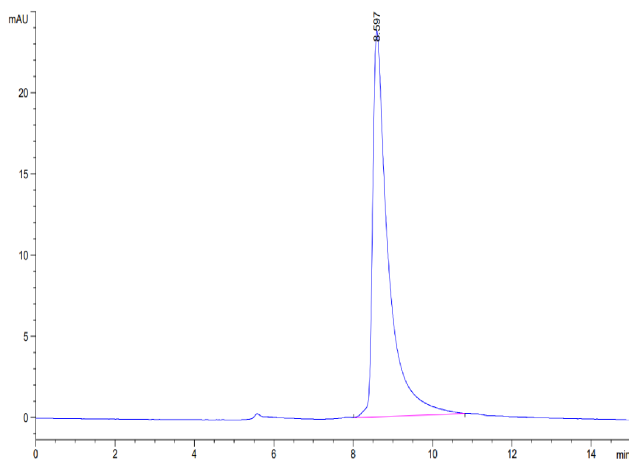
Product Introduction

Species	Mouse
Protein Construction	<div style="display: flex; align-items: center; justify-content: center;"> <div style="background-color: #4a7ebb; color: white; padding: 5px; margin-right: 10px;">His</div> <div style="background-color: #0070c0; color: white; padding: 5px; text-align: center;"> CLEC12A/MICL/CLL-1 (Tyr65-Arg267) Accession # Q504P2-1 </div> </div> <div style="display: flex; justify-content: space-between; margin-top: 5px;"> N-term C-term </div>
Purity	> 95% as determined by Bis-Tris PAGE > 95% as determined by HPLC
Endotoxin Level	Less than 1EU per µg by the LAL method.
Expression System	HEK293
Theoretical Molecular Weight	24.9 kDa
Apparent Molecular Weight	Due to glycosylation, the protein migrates to 30-40 kDa based on Bis-Tris PAGE result.
Formulation	Lyophilized from a 0.22 µm filtered solution in PBS, (pH 7.4).
Reconstitution	It is recommended that this vial be briefly centrifuged prior to opening to bring the contents to the bottom. Reconstitute the lyophilized powder in ddH ₂ O more than 100 µg/ml.
Storage & Stability	Upon receiving, the product remains stable up to 6 months at -20 °C or below. Upon reconstitution, the product should be stable for 3 months at -80 °C. Avoid repeated freeze-thaw cycles.

Examples



CLEC12A/MICL/CLL-1, His, Mouse on Bis-Tris PAGE under reduced condition. The purity is greater than 95%.



The purity of CLEC12A/MICL/CLL-1, His, Mouse is greater than 95% as determined by SEC-HPLC.

Background

Target Background : CLEC12A, also known as CLL-1 is inhibitory C-type lectin-like receptor with ITIM motif. It can associate with signaling phosphatases SHP-1 and SHP-2. CLEC12A is a potential target due to its high expression in acute myeloid leukemia (AML) cells. And there are various therapeutic approaches using CLEC12A as a target for AML, such as CD3/ CLEC12A antibody. It can recruit unstimulated primary T cells against cancer cells with CLL-1 on the surface.

Synonyms : MICL; CLL-1; CLEC12A; CLL1; DCAL2; DCAL-2; CD371; CD303; CLECSF11; CLECSF7; DLEC; HECL; PRO34150; DCAL-2

For laboratory research use only. Direct human use, including taking orally and injection and clinical use are forbidden.

Manufacturer: Nanjing GenScript Biotech Co., Ltd. No. 28Yongxi Road, Jiangning District, Nanjing, Jiangsu, China