

Rev05
Update: Aug,11,2025**DATASHEET**

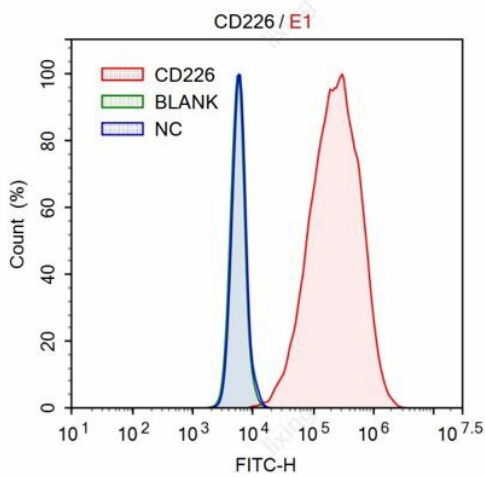
DNAM-1/CD226, His, Human

Cat. No.: Z03455

Product Introduction

Species	Human				
Protein Construction	<table><tr><td>DNAM-1/CD226 (Glu19-Asn247) Accession # Q15762</td><td>Poly-His</td></tr><tr><td>N-term</td><td>C-term</td></tr></table>	DNAM-1/CD226 (Glu19-Asn247) Accession # Q15762	Poly-His	N-term	C-term
DNAM-1/CD226 (Glu19-Asn247) Accession # Q15762	Poly-His				
N-term	C-term				
Purity	> 90% as analyzed by SDS-PAGE				
Endotoxin Level	< 1 EU/μg of protein by gel clotting method				
Biological Activity	DNAM-1/CD226, His, Human can bind with CHO-K1/aAPC/CD155 Clone by FACS analysis.				
Expression System	HEK 293				
Apparent Molecular Weight	~39.3 kDa, on SDS-PAGE under reducing conditions.				
Formulation	Lyophilized from a 0.2 μm filtered solution in PBS.				
Reconstitution	It is recommended that this vial be briefly centrifuged prior to opening to bring the contents to the bottom. Reconstitute the lyophilized powder in ddH ₂ O or PBS up to 100 μg/ml.				
Storage & Stability	Upon receiving, this product remains stable for up to 6 months at lower than -70°C. Upon reconstitution, the product should be stable for up to 1 week at 4°C or up to 3 months at -20°C. For long term storage it is recommended that a carrier protein (example 0.1% BSA) be added. Avoid repeated freeze-thaw cycles.				

Examples



FACS analysis of DNAM-1/CD226, His, Human (Cat. No: Z03455) and CHO-K1/aAPC/CD155 Clone (CHO-K1 cell overexpressing human CD155), compared with blank control (green line, untreated cell) and negative control (blue line, only treated with THE™ His Tag Antibody [iFluor 488], mAb, Mouse (Cat. No. A01800)), DNAM-1/CD226, His, Human can bind with CHO-K1/aAPC/CD155 Clone.

Background

Target Background : CD226 (Cluster of Differentiation 226), also known as PTA1 (outdated term, 'platelet and T cell activation antigen 1')[5] or DNAM-1 (DNAX Accessory Molecule-1), is a ~65 kDa glycoprotein expressed on the surface of natural killer cells, platelets, monocytes and a subset of T cells. It is a member of the immunoglobulin superfamily. This protein is involved in intercellular adhesion, lymphocyte signaling, cytotoxicity and lymphokine secretion mediated by cytotoxic T-lymphocyte (CTL) and NK cell. It is the cell surface receptor for NECTIN2 and its main ligands are CD112 and CD155. It stimulates T-cell proliferation and cytokine production, including that of IL-2, IL-5, IL-10, IL-13, and IFN γ upon ligand binding.

Synonyms : DNAM-1; DNAM1; PTA1; TLISA1; CD226 molecule

For laboratory research use only. Direct human use, including taking orally and injection and clinical use are forbidden.

Manufacturer: Nanjing GenScript Biotech Co., Ltd. No. 28Yongxi Road, Jiangning District, Nanjing, Jiangsu, China