

Rev06
Update: Aug,11,2025**DATASHEET**

Anti-Palivizumab Antibody (2F12), mAb, Mouse

Cat. No.: A02111

Overview

Specificity	This product is specific for Palivizumab
Host Species	Mouse
Immunogen	Palivizumab
Conjugate	Unconjugated

Applications

Working concentrations for specific applications should be determined by the investigators. The appropriate concentrations may be affected by secondary antibody affinity, antigen concentration, the sensitivity of the method of detection, temperature, the length of the incubations, and other factors. The suitability of this antibody for applications other than those listed below has not been determined. The following concentration ranges are recommended starting points for this product.

Application	Recommended Usage
ELISA	0.005-0.5 µg/ml

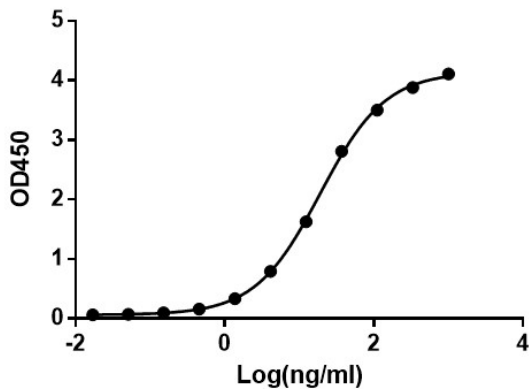
Properties

Form	Lyophilized
Storage Buffer	This product is lyophilized with PBS, pH 7.2, containing 0.02% sodium azide.
Reconstitution	Reconstitute the lyophilized powder with deionized water (or equivalent) to a final concentration of 0.5 mg/ml.
Storage Instructions	The lyophilized product remains stable up to 1 year at -20 °C from date of receipt. Upon reconstitution, it can be stored for 2-3 weeks at 2-8 °C or for up to 12 months at -20 °C or below. Avoid repeated freezing and thawing cycles.
Purification	Protein A affinity column
Isotype	Mouse IgG1, κ
Clonality	Monoclonal
Clone ID	2F12

Note GenScript can customize this product per customer's request including product size, buffer components, etc.

Examples

Anti-Palivizumab Antibody (2F12) binds with Palivizumab

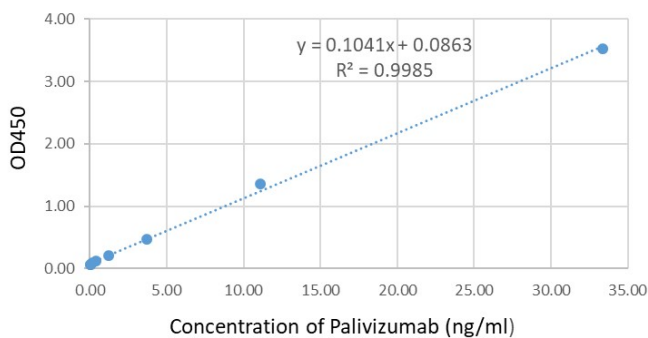


ELISA binding of Anti-Palivizumab Antibody (2F12), mAb, Mouse (GenScript, A02111-40) with Palivizumab. While the antibody does not recognize the human IgG (data not shown). Coating antigen: Palivizumab, 1 µg/ml.

Anti-Palivizumab Antibody (2F12), mAb, Mouse (GenScript, A02111-40) dilution start from 1,000 ng/ml.

$EC_{50} = 19.14$ ng/ml.

Standard curve of Palivizumab Sandwich ELISA



Standard curve of Palivizumab Sandwich ELISA. The Palivizumab Sandwich ELISA assay is developed by using Anti-Palivizumab Antibody (7B3), mAb, Mouse (GenScript, A02112-40) and Anti-Palivizumab Antibody (2F12), mAb, Mouse (GenScript, A02111-40) as the capture and detection antibodies, respectively.

In this ELISA assay, Anti-Palivizumab Antibody (2F12), mAb, Mouse (GenScript, A02111-40) was labeled with Biotin.

GenScript can provide customized conjugation services for this product per the customer's request.

The sensitivity of detecting Palivizumab is up to 0.6 ng/ml.

Background

Target Background : Palivizumab with trade name Synagis, is an FDA-approved drug for the prevention of respiratory syncytial virus (RSV) infections. It is a recombinant humanized IgG1 kappa isotype monoclonal antibody. Palivizumab binds the RSV envelope fusion protein (RSV F) on the surface of the virus and blocking a critical step in the membrane fusion process. Anti-Palivizumab Antibody (2F12), mAb, Mouse is produced from a hybridoma resulting from the fusion of partner and B-lymphocytes obtained from a mouse immunized with Palivizumab.

Synonyms : Mouse monoclonal to Palivizumab//Synagis

For laboratory research use only. Direct human use, including taking orally and injection and clinical use are forbidden.

Manufacturer: Nanjing GenScript Biotech Co., Ltd. No. 28Yongxi Road, Jiangning District, Nanjing, Jiangsu, China