

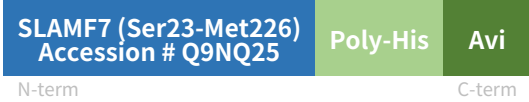
Rev07  
 Update: Aug,11,2025

**DATASHEET**

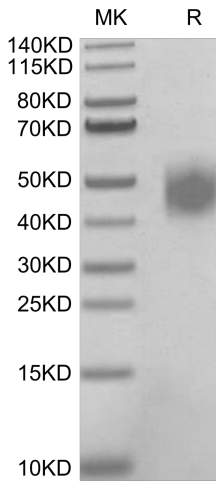
# CS1/CRACC/SLAMF7, His & Avi, Human

Cat. No.: Z03649

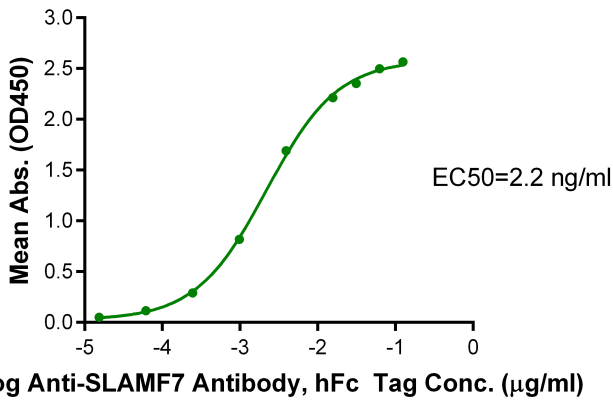
## Product Introduction

<b>Species</b>	Human
<b>Protein Construction</b>	 <p>SLAMF7 (Ser23-Met226) Accession # Q9NQ25</p> <p>N-term</p> <p>Poly-His</p> <p>Avi</p> <p>C-term</p>
<b>Purity</b>	<p>&gt; 95% as determined by Bis-Tris PAGE</p> <p>&gt; 95% as determined by HPLC</p>
<b>Endotoxin Level</b>	≤ 1 EU/μg of protein by LAL method
<b>Biological Activity</b>	Measured by its binding ability in a functional ELISA. Immobilized CS1/CRACC/SLAMF7, His & Avi, Human at 1μg/ml (100μl/well) on the plate can bind AntiSLAMF7 Antibody, hFc Tag. Test result was comparable to standard batch.
<b>Expression System</b>	HEK293
<b>Theoretical Molecular Weight</b>	25.3 kDa
<b>Apparent Molecular Weight</b>	Due to glycosylation, the protein migrates to 40-55 kDa based on Bis-Tris PAGE result.
<b>Formulation</b>	Lyophilized from a 0.22 μm filtered solution in PBS, pH 7.4.
<b>Reconstitution</b>	It is recommended that this vial be briefly centrifuged prior to opening to bring the contents to the bottom. Reconstitute the lyophilized powder in ddH <sub>2</sub> O more than 100 μg/ml.
<b>Storage &amp; Stability</b>	Upon receiving, the product remains stable up to 6 months at -20 °C or below. Upon reconstitution, the product should be stable for 3 months at -80 °C. Avoid repeated freeze-thaw cycles.

## Examples

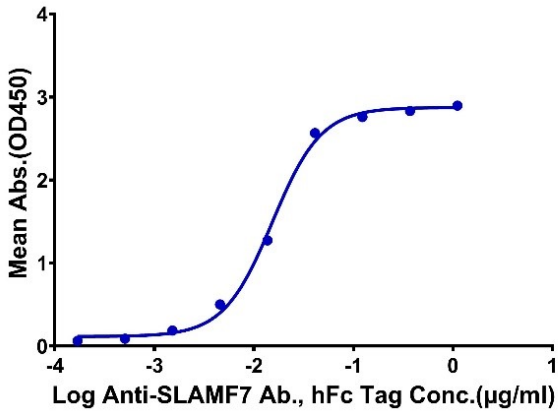


CS1/CRACC/SLAMF7, His & Avi, Human on Bis-Tris PAGE under reduced condition. The purity is greater than 95%.

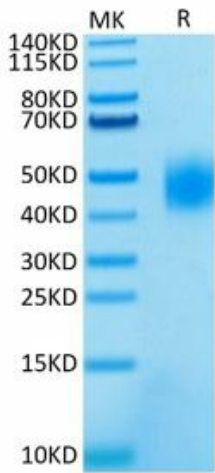


Immobilized CS1/CRACC/SLAMF7, His & Avi, Human, His Tag at 1 µg/ml (100 µl/well) on the plate. Dose response curve for Anti-SLAMF7 Antibody, hFc Tag with the EC50 of 2.2 ng/ml determined by ELISA.

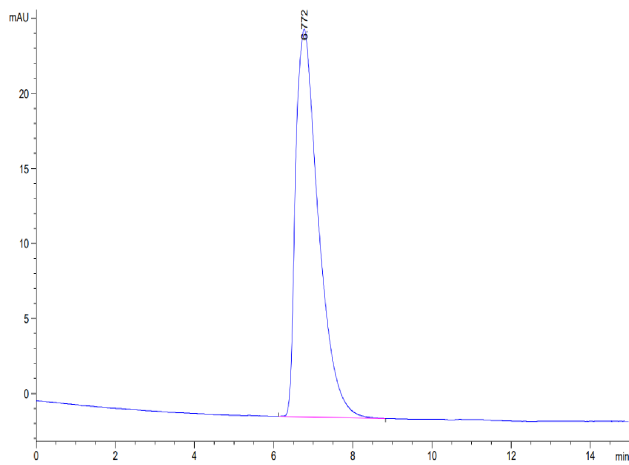
**Human SLAMF7, His Tag ELISA**  
0.1µg Human SLAMF7, His Tag Per Well



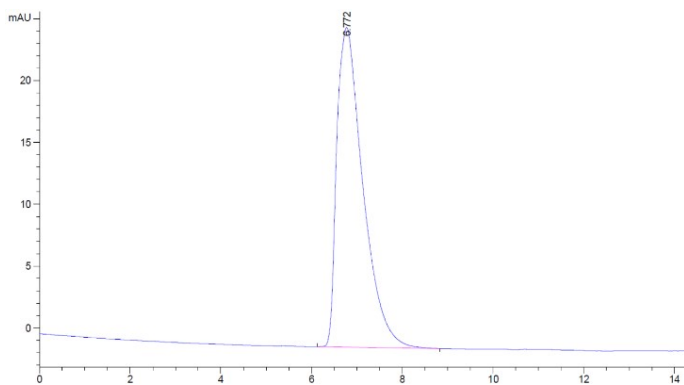
Immobilized SLAMF7, His & Avi tag at 1 ug/ml (100 ul/Well). Dose response curve for Elotuzumab with the EC50 of 42.6 ng/ml determined by ELISA.



Recombinant Human CRACC/SLAMF7 Protein on SDS-PAGE under reducing conditions, the purity is greater than 95%.



The purity of CS1/CRACC/SLAMF7, His & Avi, Human is greater than 95% as determined by SEC-HPLC.



The purity of Recombinant Human CRACC/SLAMF7 Protein is greater than 95% as determined by SEC-HPLC.

## Background

**Target Background :** CD2-like receptor activating cytotoxic cells (CRACC), also known as CS1, novel Ly9, SLAMF7, and CD319, is a 65-75 kDa type I transmembrane glycoprotein in the SLAM subgroup of the CD2 family, a self-ligand receptor of the signaling lymphocytic activation molecule (SLAM) family. SLAM receptors triggered by homo- or heterotypic cell-cell interactions are modulating the activation and differentiation of a wide variety of immune cells and thus are involved in the regulation and interconnection of both innate and adaptive immune responses.

**Synonyms** : CD319 antigen; CD319; 19A; CD2 subset 1; CD2-like receptor activating cytotoxic cells; CRACC; CRACCCD2-like receptor-activating cytotoxic cells; CS119A24 protein; Membrane protein FOAP-12; novel LY9 (lymphocyte antigen 9) like protein; Novel Ly9; Protein 19A; SLAM family member 7; SLAMF7; CS1

**For laboratory research use only. Direct human use, including taking orally and injection and clinical use are forbidden.**

Manufacturer: Nanjing GenScript Biotech Co., Ltd. No. 28Yongxi Road, Jiangning District, Nanjing, Jiangsu, China